

Anti-Phospho-PDGFR beta (Y1009) Rabbit Polyclonal Antibody



Catalog #: U0343

Aliases

PDGFR; PDGFR1; Platelet-derived growth factor receptor beta; PDGF-R-beta; PDGFR-beta; Beta platelet-derived growth factor receptor; Beta-type platelet-derived growth factor receptor; CD140 antigen-like family member B; Platelet-derived growth factor receptor 1; PDGFR-1; CD140b

Background

Gene Name: PDGFRB

NCBI Gene Entry: [5159](#)

UniProt Entry: [P09619](#)

Application Information

Molecular Weight: Predicted, 123 kDa; observed, 190 kDa

Clonality: Rabbit polyclonal antibody

Species Reactivity: Human, mouse, rat, dog

Applications Tested: Western blotting (WB)

Immunogen

A synthesized peptide derived from human Phospho-PDGFR beta (Y1009)

Isotype

Rabbit IgG

Storage Buffer

Supplied in PBS (pH 7.3) containing 30% glycerol, and 0.01% sodium azide.

Storage

Store at -20 °C for one year.

Recommended Dilutions

Western Blotting (WB): 1:500-1:1,000

Note: This product is for research use only.

Validation Data

SUPPORT

SUPPORT@GENUINBIOTECH.COM
TEL: +1-540-855-7041

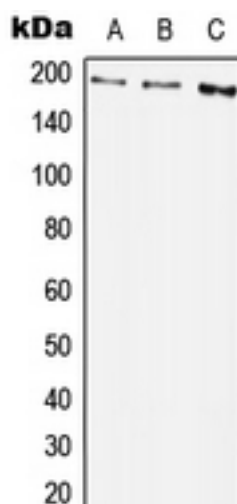
ORDERS

SALES@GENUINBIOTECH.COM
FAX: +1-540-855-7041

WWW.GENUINBIOTECH.COM

Anti-Phospho-PDGFR beta (Y1009) Rabbit Polyclonal Antibody

PAGE 2



Western blotting analysis of PDGFR beta (Phospho-Y1009) expression in A549 (A), Raw264.7 (B), PC12 (C) whole cell lysates.

SUPPORT

SUPPORT@GENUINBIOTECH.COM
TEL: +1-540-855-7041

ORDERS

SALES@GENUINBIOTECH.COM
FAX: +1-540-855-7041

WWW.GENUINBIOTECH.COM