

# Anti-Phospho-CHEK2 (T432) Rabbit Polyclonal Antibody



**Catalog #: U0348**

## Aliases

CDS1; CHK2; RAD53; Serine/threonine-protein kinase Chk2; CHK2 checkpoint homolog; Cds1 homolog; Hucds1; hCds1; Checkpoint kinase 2

## Background

Gene Name: CHEK2

NCBI Gene Entry: [11200](#)

UniProt Entry: [O96017](#)

## Application Information

Molecular Weight: Predicted, 60 kDa; observed, 62 kDa

Clonality: Rabbit polyclonal antibody

Species Reactivity: Human, rat

Applications Tested: Western blotting (WB)

## Immunogen

A synthesized peptide derived from human Phospho-CHEK2 (T432)

## Isotype

Rabbit IgG

## Storage Buffer

Supplied in PBS (pH 7.3) containing 30% glycerol, and 0.01% sodium azide.

## Storage

Store at -20 °C for one year.

## Recommended Dilutions

Western Blotting (WB): 1:500-1:1,000

**Note:** This product is for research use only.

## Validation Data

---

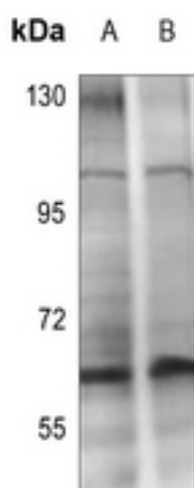
### SUPPORT

SUPPORT@GENUINBIOTECH.COM  
TEL: +1-540-855-7041

### ORDERS

SALES@GENUINBIOTECH.COM  
FAX: +1-540-855-7041

[WWW.GENUINBIOTECH.COM](http://WWW.GENUINBIOTECH.COM)



Western blotting analysis of CHK2 (Phospho-T432) expression in HepG2 (A), SGC7901 (B) whole cell lysates.