

Anti-Phospho-SGK223 (Y413) Rabbit Polyclonal Antibody



Catalog #: U0351

Aliases

Tyrosine-protein kinase SgK223; Sugen kinase 223

Background

Gene Name: SGK223

NCBI Gene Entry: [157285](#)

UniProt Entry: [Q86YV5](#)

Application Information

Molecular Weight: Predicted, 149 kDa; observed, 175 kDa

Clonality: Rabbit polyclonal antibody

Species Reactivity: Human

Applications Tested: Western blotting (WB), immunohistochemistry (IHC)

Immunogen

A synthesized peptide derived from human Phospho-SGK223 (Y413)

Isotype

Rabbit IgG

Storage Buffer

Supplied in PBS (pH 7.3) containing 30% glycerol, and 0.01% sodium azide.

Storage

Store at -20 °C for one year.

Recommended Dilutions

Western Blotting (WB): 1:500-1:1,000

Immunohistochemistry (IHC): 1:100-1:200

Note: This product is for research use only.

Validation Data

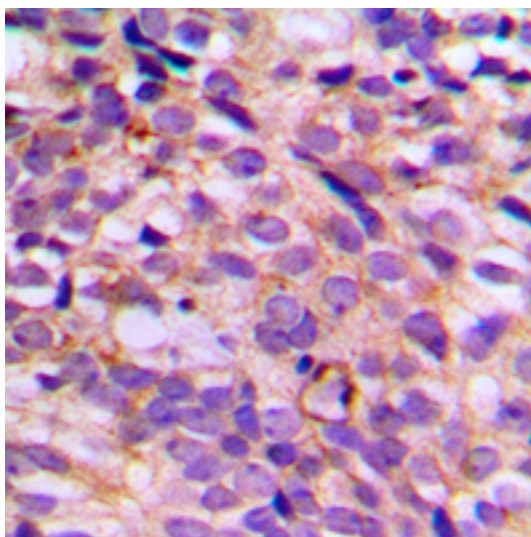
SUPPORT

SUPPORT@GENUINBIOTECH.COM
TEL: +1-540-855-7041

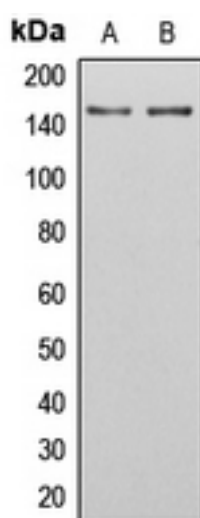
ORDERS

SALES@GENUINBIOTECH.COM
FAX: +1-540-855-7041

WWW.GENUINBIOTECH.COM



Immunohistochemical analysis of SGK223 (Phospho-Y413) staining in human breast cancer formalin fixed paraffin embedded tissue section. The section was pre-treated using heat mediated antigen retrieval with sodium citrate buffer (pH 6.0). The section was then incubated with the antibody at room temperature and detected using an HRP conjugated compact polymer system. DAB was used as the chromogen. The section was then counterstained with haematoxylin and mounted with DPX.



Western blotting analysis of SGK223 (Phospho-Y413) expression in U251MG (A), HeLa (B) whole cell lysates.