

# Anti-Phospho-CDC2 (Y15) Rabbit Polyclonal Antibody



**Catalog #: U0364**

## Aliases

CDC2; CDC28A; CDKN1; P34CDC2; Cyclin-dependent kinase 1; CDK1; Cell division control protein 2 homolog; Cell division protein kinase 1; p34 protein kinase

## Background

Gene Name: CDK1

NCBI Gene Entry: [983](#)

UniProt Entry: [P06493](#)

## Application Information

Molecular Weight: Predicted, 34 kDa; observed, 34 kDa

Clonality: Rabbit polyclonal antibody

Species Reactivity: Human, mouse, rat, bovine, chicken, zebrafish

Applications Tested: Western blotting (WB)

## Immunogen

A synthesized peptide derived from human Phospho-CDC2 (Y15)

## Isotype

Rabbit IgG

## Storage Buffer

Supplied in PBS (pH 7.3) containing 30% glycerol, and 0.01% sodium azide.

## Storage

Store at -20 °C for one year.

## Recommended Dilutions

Western Blotting (WB): 1:500-1:1,000

**Note:** This product is for research use only.

## Validation Data

---

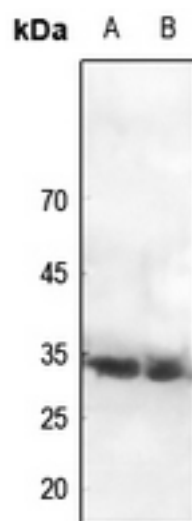
### SUPPORT

SUPPORT@GENUINBIOTECH.COM  
TEL: +1-540-855-7041

### ORDERS

SALES@GENUINBIOTECH.COM  
FAX: +1-540-855-7041

[WWW.GENUINBIOTECH.COM](http://WWW.GENUINBIOTECH.COM)



Western blotting analysis of CDC2 (Phospho-Y15) expression in HEK293T (A), HeLa (B) whole cell lysates.