

# Anti-Phospho-ATF2 (T69) Rabbit Polyclonal Antibody



**Catalog #: U0366**

## Aliases

CREB2; CREBP1; Cyclic AMP-dependent transcription factor ATF-2; cAMP-dependent transcription factor ATF-2; Activating transcription factor 2; Cyclic AMP-responsive element-binding protein 2; CREB-2; cAMP-responsive element-binding protein 2; HB16; Histone acetyltransferase ATF2; cAMP response element-binding protein CRE-BP1

## Background

Gene Name: ATF2

NCBI Gene Entry: [1386](#)

UniProt Entry: [P15336](#)

## Application Information

Molecular Weight: Predicted, 54 kDa; observed, 52 kDa

Clonality: Rabbit polyclonal antibody

Species Reactivity: Human, mouse, rat, bovine, chicken

Applications Tested: Western blotting (WB), immunohistochemistry (IHC), immunoprecipitation (IP)

## Immunogen

A synthesized peptide derived from human Phospho-ATF2 (T69)

## Isotype

Rabbit IgG

## Storage Buffer

Supplied in PBS (pH 7.3) containing 30% glycerol, and 0.01% sodium azide.

## Storage

Store at -20 °C for one year.

## Recommended Dilutions

Western Blotting (WB): 1:500-1:1,000

Immunohistochemistry (IHC): 1:100-1:200

Immunoprecipitation (IP): 1:10-1:100

---

### SUPPORT

SUPPORT@GENUINBIOTECH.COM  
TEL: +1-540-855-7041

### ORDERS

SALES@GENUINBIOTECH.COM  
FAX: +1-540-855-7041

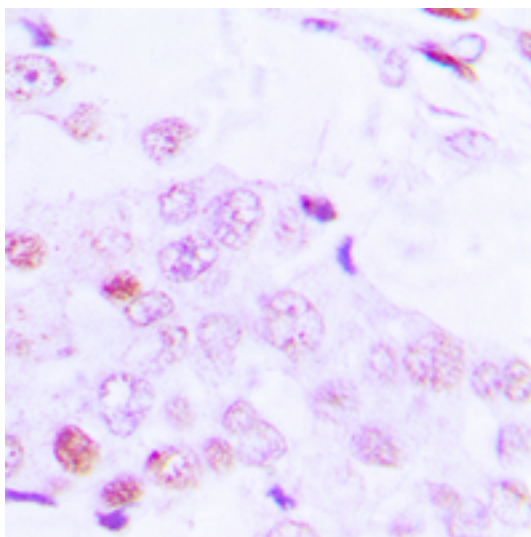
[WWW.GENUINBIOTECH.COM](http://WWW.GENUINBIOTECH.COM)

## Anti-Phospho-ATF2 (T69) Rabbit Polyclonal Antibody

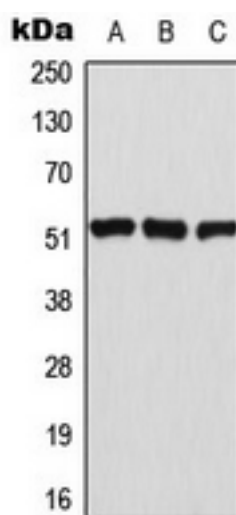
PAGE 2

**Note:** This product is for research use only.

### Validation Data



Immunohistochemical analysis of ATF2 (Phospho-T69) staining in human lung cancer formalin fixed paraffin embedded tissue section. The section was pre-treated using heat mediated antigen retrieval with sodium citrate buffer (pH 6.0). The section was then incubated with the antibody at room temperature and detected using an HRP conjugated compact polymer system. DAB was used as the chromogen. The section was then counterstained with haematoxylin and mounted with DPX.



Western blotting analysis of ATF2 (Phospho-T69) expression in HeLa (A), NIH3T3 (B), PC12 (C) whole cell lysates.

#### SUPPORT

SUPPORT@GENUINBIOTECH.COM  
TEL: +1-540-855-7041

#### ORDERS

SALES@GENUINBIOTECH.COM  
FAX: +1-540-855-7041

[WWW.GENUINBIOTECH.COM](http://WWW.GENUINBIOTECH.COM)