

Anti-Phospho-GSK3 alpha/beta (Y279/216) Rabbit Polyclonal Antibody



Catalog #: U0379

Aliases

GSK3A; Glycogen synthase kinase-3 alpha; GSK-3 alpha; Serine/threonine-protein kinase
GSK3A; GSK3B; Glycogen synthase kinase-3 beta; GSK-3 beta; Serine/threonine-protein kinase
GSK3B

Background

Gene Name: GSK3A/B
NCBI Gene Entry: [2931](#)
UniProt Entry: [P49840/P49841](#)

Application Information

Molecular Weight: Predicted, 50, 46 kDa; observed, 51, 46 kDa
Clonality: Rabbit polyclonal antibody
Species Reactivity: Human, mouse, rat, zebrafish
Applications Tested: Western blotting (WB), immunohistochemistry (IHC)

Immunogen

A synthesized peptide derived from human Phospho-GSK3 alpha/beta (Y279/216)

Isotype

Rabbit IgG

Storage Buffer

Supplied in PBS (pH 7.3) containing 30% glycerol, and 0.01% sodium azide.

Storage

Store at -20 °C for one year.

Recommended Dilutions

Western Blotting (WB): 1:500-1:1,000
Immunohistochemistry (IHC): 1:100-1:200

Note: This product is for research use only.

Validation Data

SUPPORT

SUPPORT@GENUINBIOTECH.COM
TEL: +1-540-855-7041

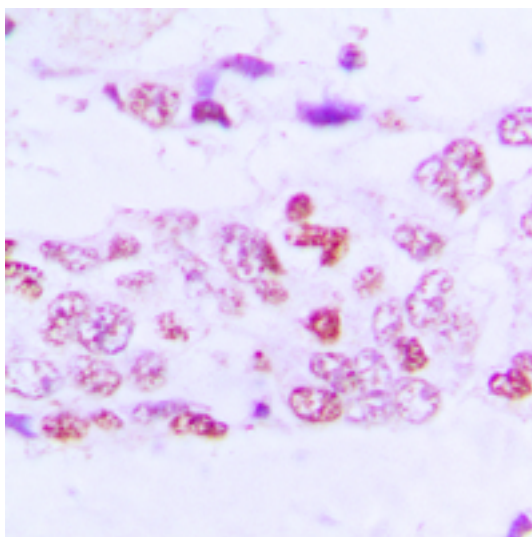
ORDERS

SALES@GENUINBIOTECH.COM
FAX: +1-540-855-7041

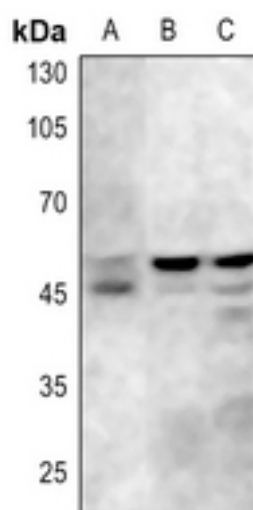
WWW.GENUINBIOTECH.COM

Anti-Phospho-GSK3 alpha/beta (Y279/216) Rabbit Polyclonal Antibody

PAGE 2



Immunohistochemical analysis of GSK3 alpha/beta (Phospho-Y279/216) staining in human lung cancer formalin fixed paraffin embedded tissue section. The section was pre-treated using heat mediated antigen retrieval with sodium citrate buffer (pH 6.0). The section was then incubated with the antibody at room temperature and detected using an HRP conjugated compact polymer system. DAB was used as the chromogen. The section was then counterstained with haematoxylin and mounted with DPX.



Western blotting analysis of GSK3 alpha/beta (Phospho-Y279/216) expression in mouse testis (A), rat testis (B), rat spleen (C) whole cell lysates.

SUPPORT

SUPPORT@GENUINBIOTECH.COM
TEL: +1-540-855-7041

ORDERS

SALES@GENUINBIOTECH.COM
FAX: +1-540-855-7041

WWW.GENUINBIOTECH.COM