

Anti-Phospho-IGF1 Receptor (Y1161) Rabbit Polyclonal Antibody



Catalog #: U0431

Aliases

IGF1R; Insulin-like growth factor 1 receptor; Insulin-like growth factor I receptor; IGF-I receptor; CD221; INSR; Insulin receptor; IR; CD220

Background

Gene Name: IGF1R

NCBI Gene Entry: [3480/3643](#)

UniProt Entry: [P08069/P06213](#)

Application Information

Molecular Weight: Predicted, 154, 156 kDa; observed, 200 kDa

Clonality: Rabbit polyclonal antibody

Species Reactivity: Human, mouse, rat, bovine, chicken, zebrafish

Applications Tested: Western blotting (WB), immunohistochemistry (IHC), immunocytochemistry (IC), immunoprecipitation (IP)

Immunogen

A synthesized peptide derived from human Phospho-IGF1 Receptor (Y1161)

Isotype

Rabbit IgG

Storage Buffer

Supplied in PBS (pH 7.3) containing 30% glycerol, and 0.01% sodium azide.

Storage

Store at -20 °C for one year.

Recommended Dilutions

Western Blotting (WB): 1:500-1:1,000

Immunohistochemistry (IHC): 1:100-1:200

Immunocytochemistry (IC): 1:100-1:500

Immunoprecipitation (IP): 1:10-1:100

Note: This product is for research use only.

SUPPORT

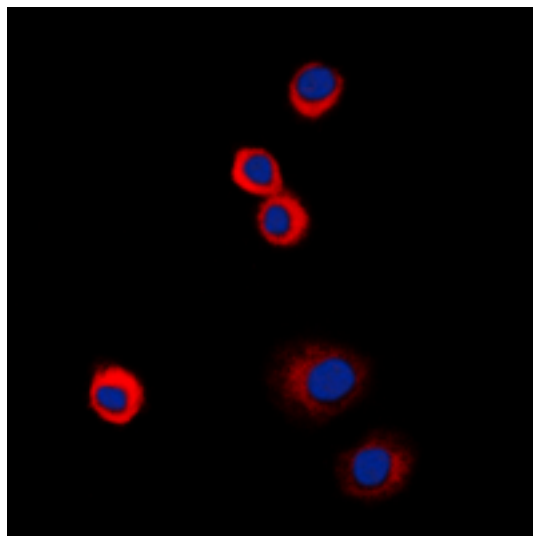
SUPPORT@GENUINBIOTECH.COM
TEL: +1-540-855-7041

ORDERS

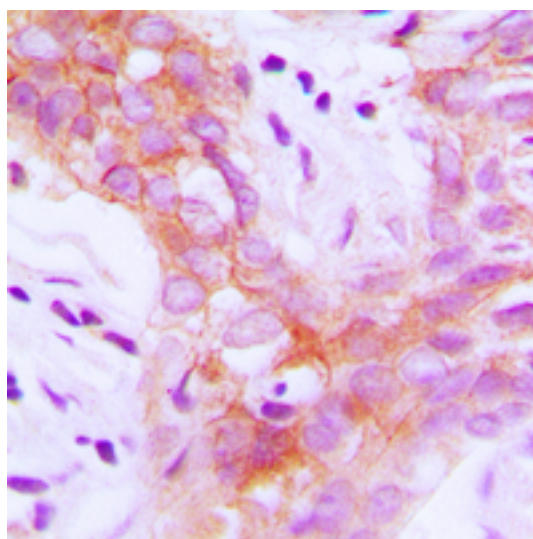
SALES@GENUINBIOTECH.COM
FAX: +1-540-855-7041

WWW.GENUINBIOTECH.COM

Validation Data



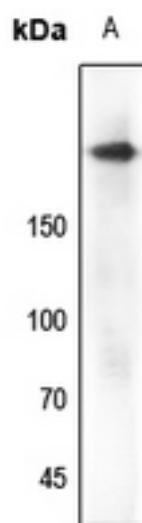
Immunocytochemical analysis of IGF1 Receptor (Phospho-Y1161) staining in HeLa cells. Formalin-fixed cells were permeabilized with 0.1% Triton X-100 in TBS for 5-10 minutes and blocked with 3% BSA-PBS for 30 minutes at room temperature. Cells were probed with the primary antibody in 3% BSA-PBS and incubated overnight at 4 °C in a humidified chamber. Cells were washed with PBST and incubated with a DyLight 594-conjugated secondary antibody (red) in PBS at room temperature in the dark. DAPI was used to stain the cell nuclei (blue).



Immunohistochemical analysis of IGF1 Receptor (Phospho-Y1161) staining in human breast cancer formalin fixed paraffin embedded tissue section. The section was pre-treated using heat mediated antigen retrieval with sodium citrate buffer (pH 6.0). The section was then incubated with the antibody at room temperature and detected using an HRP conjugated compact polymer system. DAB was used as the chromogen. The section was then counterstained with haematoxylin and mounted with DPX.

Anti-Phospho-IGF1 Receptor (Y1161) Rabbit Polyclonal Antibody

PAGE 3



Western blotting analysis of IGF1 Receptor (Phospho-Y1161) expression in zebrafish (A) whole cell lysates.

SUPPORT

SUPPORT@GENUINBIOTECH.COM
TEL: +1-540-855-7041

ORDERS

SALES@GENUINBIOTECH.COM
FAX: +1-540-855-7041

WWW.GENUINBIOTECH.COM