

# Anti-Phospho-Histone Deacetylase 6 (S22) Rabbit Polyclonal Antibody



**Catalog #: U0481**

## Aliases

KIAA0901; Histone deacetylase 6; HD6

## Background

Gene Name: HDAC6

NCBI Gene Entry: [10013](#)

UniProt Entry: [Q9UBN7](#)

## Application Information

Molecular Weight: Predicted, 131 kDa; observed, 160 kDa

Clonality: Rabbit polyclonal antibody

Species Reactivity: Human, monkey

Applications Tested: Western blotting (WB), immunohistochemistry (IHC), immunocytochemistry (IC)

## Immunogen

A synthesized peptide derived from human Phospho-Histone Deacetylase 6 (S22)

## Isotype

Rabbit IgG

## Storage Buffer

Supplied in PBS (pH 7.3) containing 30% glycerol, and 0.01% sodium azide.

## Storage

Store at -20 °C for one year.

## Recommended Dilutions

Western Blotting (WB): 1:500-1:1,000

Immunohistochemistry (IHC): 1:100-1:200

Immunocytochemistry (IC): 1:100-1:500

**Note:** This product is for research use only.

## Validation Data

---

### SUPPORT

SUPPORT@GENUINBIOTECH.COM  
TEL: +1-540-855-7041

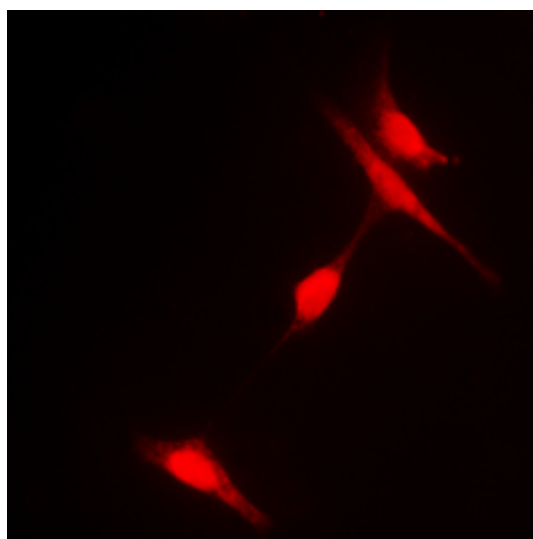
### ORDERS

SALES@GENUINBIOTECH.COM  
FAX: +1-540-855-7041

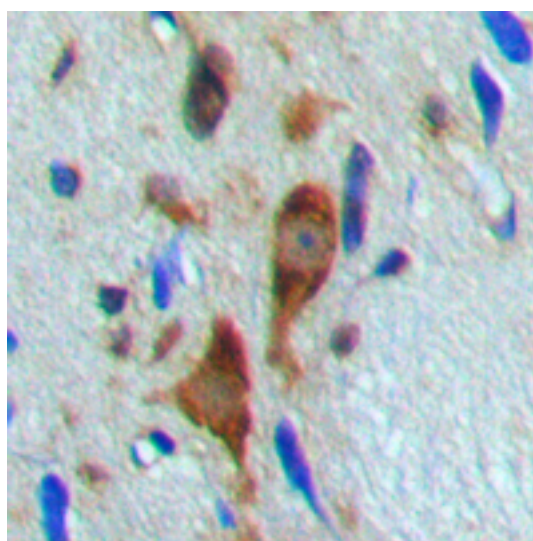
[WWW.GENUINBIOTECH.COM](http://WWW.GENUINBIOTECH.COM)

## Anti-Phospho-Histone Deacetylase 6 (S22) Rabbit Polyclonal Antibody

PAGE 2



Immunocytochemical analysis of Histone Deacetylase 6 (Phospho-S22) staining in HeLa cells. Formalin-fixed cells were permeabilized with 0.1% Triton X-100 in TBS for 5-10 minutes and blocked with 3% BSA-PBS for 30 minutes at room temperature. Cells were probed with the primary antibody in 3% BSA-PBS and incubated overnight at 4 °C in a humidified chamber. Cells were washed with PBST and incubated with a DyLight 594-conjugated secondary antibody (red) in PBS at room temperature in the dark.



Immunohistochemical analysis of Histone Deacetylase 6 (Phospho-S22) staining in human brain formalin fixed paraffin embedded tissue section. The section was pre-treated using heat mediated antigen retrieval with sodium citrate buffer (pH 6.0). The section was then incubated with the antibody at room temperature and detected using an HRP conjugated compact polymer system. DAB was used as the chromogen. The section was then counterstained with haematoxylin and mounted with DPX.

---

### SUPPORT

SUPPORT@GENUINBIOTECH.COM  
TEL: +1-540-855-7041

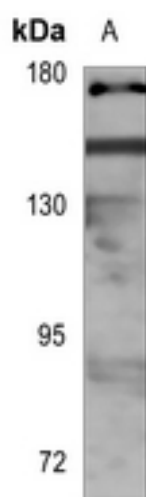
### ORDERS

SALES@GENUINBIOTECH.COM  
FAX: +1-540-855-7041

[WWW.GENUINBIOTECH.COM](http://WWW.GENUINBIOTECH.COM)

## Anti-Phospho-Histone Deacetylase 6 (S22) Rabbit Polyclonal Antibody

PAGE 3



Western blotting analysis of Histone Deacetylase 6 (Phospho-S22) expression in Jurkat (A) whole cell lysates.

---

### SUPPORT

SUPPORT@GENUINBIOTECH.COM  
TEL: +1-540-855-7041

### ORDERS

SALES@GENUINBIOTECH.COM  
FAX: +1-540-855-7041

[WWW.GENUINBIOTECH.COM](http://WWW.GENUINBIOTECH.COM)