

# Anti-Phospho-LYN (Y192) Rabbit Polyclonal Antibody



**Catalog #: U0491**

## Aliases

JTK8; Tyrosine-protein kinase Lyn; Lck/Yes-related novel protein tyrosine kinase; V-yes-1 Yamaguchi sarcoma viral related oncogene homolog; p53Lyn; p56Lyn

## Background

Gene Name: LYN

NCBI Gene Entry: [4067](#)

UniProt Entry: [P07948](#)

## Application Information

Molecular Weight: Predicted, 58 kDa; observed, 58 kDa

Clonality: Rabbit polyclonal antibody

Species Reactivity: Human, mouse, rat, bovine, sheep

Applications Tested: Western blotting (WB)

## Immunogen

A synthesized peptide derived from human Phospho-LYN (Y192)

## Isotype

Rabbit IgG

## Storage Buffer

Supplied in PBS (pH 7.3) containing 30% glycerol, and 0.01% sodium azide.

## Storage

Store at -20 °C for one year.

## Recommended Dilutions

Western Blotting (WB): 1:500-1:1,000

**Note:** This product is for research use only.

## Validation Data

---

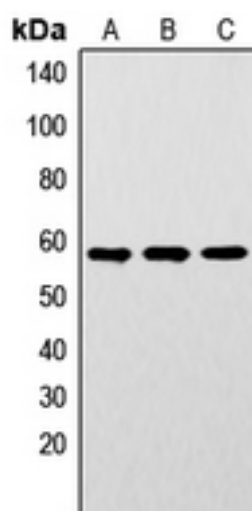
### SUPPORT

SUPPORT@GENUINBIOTECH.COM  
TEL: +1-540-855-7041

### ORDERS

SALES@GENUINBIOTECH.COM  
FAX: +1-540-855-7041

[WWW.GENUINBIOTECH.COM](http://WWW.GENUINBIOTECH.COM)



Western blotting analysis of LYN (Phospho-Y192) expression in MCF7 (A), mouse brain (B), rat brain (C) whole cell lysates.