

# Anti-Phospho-SMAD3 (S423) Rabbit Polyclonal Antibody



**Catalog #: U0522**

## Aliases

MADH3; Mothers against decapentaplegic homolog 3; MAD homolog 3; Mad3; Mothers against DPP homolog 3; hMAD-3; JV15-2; SMAD family member 3; SMAD 3; Smad3; hSMAD3

## Background

Gene Name: SMAD3

NCBI Gene Entry: [4088](#)

UniProt Entry: [P84022](#)

## Application Information

Molecular Weight: Predicted, 48 kDa; observed, 52 kDa

Clonality: Rabbit polyclonal antibody

Species Reactivity: Human, mouse, rat, bovine, chicken, monkey, pig, sheep, zebrafish

Applications Tested: Western blotting (WB)

## Immunogen

A synthesized peptide derived from human Phospho-SMAD3 (S423)

## Isotype

Rabbit IgG

## Storage Buffer

Supplied in PBS (pH 7.3) containing 30% glycerol, and 0.01% sodium azide.

## Storage

Store at -20 °C for one year.

## Recommended Dilutions

Western Blotting (WB): 1:500-1:1,000

**Note:** This product is for research use only.

## Validation Data

---

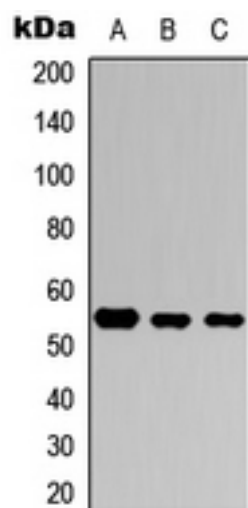
### SUPPORT

SUPPORT@GENUINBIOTECH.COM  
TEL: +1-540-855-7041

### ORDERS

SALES@GENUINBIOTECH.COM  
FAX: +1-540-855-7041

[WWW.GENUINBIOTECH.COM](http://WWW.GENUINBIOTECH.COM)



Western blotting analysis of SMAD3 (Phospho-S423) expression in HeLa (A), Raw264.7 (B), H9C2 (C) whole cell lysates.