

# Anti-Phospho-TSC2 (S939) Rabbit Polyclonal Antibody



**Catalog #: U0531**

## Aliases

TSC4; Tuberin; Tuberous sclerosis 2 protein

## Background

Gene Name: TSC2

NCBI Gene Entry: [7249](#)

UniProt Entry: [P49815](#)

## Application Information

Molecular Weight: Predicted, 200 kDa; observed, 200 kDa

Clonality: Rabbit polyclonal antibody

Species Reactivity: Human, mouse, rat, monkey

Applications Tested: Western blotting (WB), immunohistochemistry (IHC)

## Immunogen

A synthesized peptide derived from human Phospho-TSC2 (S939)

## Isotype

Rabbit IgG

## Storage Buffer

Supplied in PBS (pH 7.3) containing 30% glycerol, and 0.01% sodium azide.

## Storage

Store at -20 °C for one year.

## Recommended Dilutions

Western Blotting (WB): 1:500-1:1,000

Immunohistochemistry (IHC): 1:100-1:200

**Note:** This product is for research use only.

## Validation Data

---

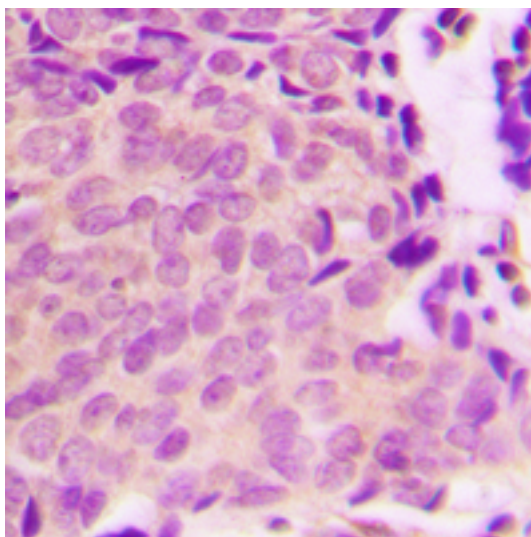
### SUPPORT

SUPPORT@GENUINBIOTECH.COM  
TEL: +1-540-855-7041

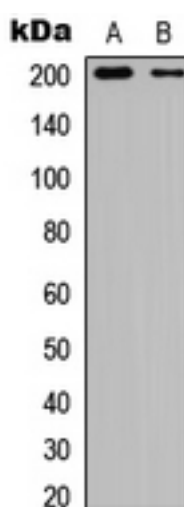
### ORDERS

SALES@GENUINBIOTECH.COM  
FAX: +1-540-855-7041

[WWW.GENUINBIOTECH.COM](http://WWW.GENUINBIOTECH.COM)



Immunohistochemical analysis of TSC2 (Phospho-S939) staining in human breast cancer formalin fixed paraffin embedded tissue section. The section was pre-treated using heat mediated antigen retrieval with sodium citrate buffer (pH 6.0). The section was then incubated with the antibody at room temperature and detected using an HRP conjugated compact polymer system. DAB was used as the chromogen. The section was then counterstained with haematoxylin and mounted with DPX.



Western blotting analysis of TSC2 (Phospho-S939) expression in HEK293T insulin-treated (A), NIH3T3 insulin-treated (B) whole cell lysates.