

Anti-Phospho-PRKD1/2/3 (S738/S742) Rabbit Polyclonal Antibody



Catalog #: U0566

Aliases

PRKD1; PKD; PKD1; PRKCM; Serine/threonine-protein kinase D1; Protein kinase C mu type; Protein kinase D; nPKC-D1; nPKC-mu; PRKD2; PKD2; HSPC187; Serine/threonine-protein kinase D2; nPKC-D2; PRKD3; EPK2; PRKCN; Serine/threonine-protein kinase D3; Protein kinase C nu type; Protein kinase EPK2; nPKC-nu

Background

Gene Name: PRKD1/2/3

NCBI Gene Entry: [5587/25865/23683](#)

UniProt Entry: [Q15139/Q9BZL6/O94806](#)

Application Information

Molecular Weight: Predicted, 101, 96, 100 kDa; observed, 130 kDa

Clonality: Rabbit polyclonal antibody

Species Reactivity: Human, mouse, rat, bovine, monkey, pig, sheep

Applications Tested: Western blotting (WB), immunohistochemistry (IHC)

Immunogen

A synthesized peptide derived from human Phospho-PRKD1/2/3 (S738/S742)

Isotype

Rabbit IgG

Storage Buffer

Supplied in PBS (pH 7.3) containing 30% glycerol, and 0.01% sodium azide.

Storage

Store at -20 °C for one year.

Recommended Dilutions

Western Blotting (WB): 1:500-1:1,000

Immunohistochemistry (IHC): 1:100-1:200

Note: This product is for research use only.

Validation Data

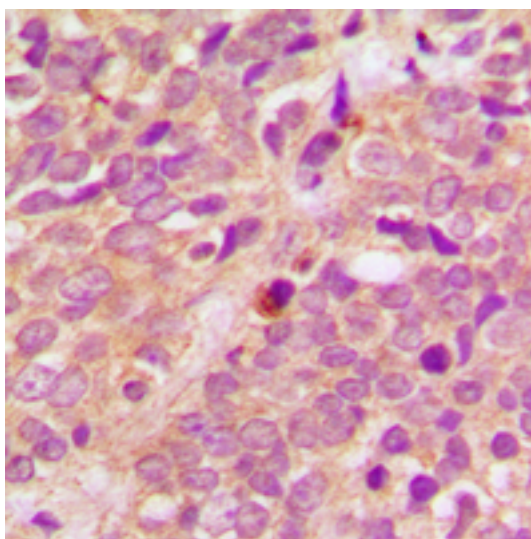
SUPPORT

SUPPORT@GENUINBIOTECH.COM
TEL: +1-540-855-7041

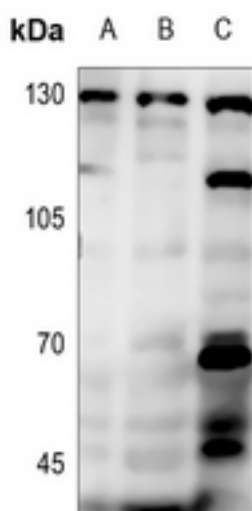
ORDERS

SALES@GENUINBIOTECH.COM
FAX: +1-540-855-7041

WWW.GENUINBIOTECH.COM



Immunohistochemical analysis of PRKD1/2/3 (Phospho-S738/S742) staining in human breast cancer formalin fixed paraffin embedded tissue section. The section was pre-treated using heat mediated antigen retrieval with sodium citrate buffer (pH 6.0). The section was then incubated with the antibody at room temperature and detected using an HRP conjugated compact polymer system. DAB was used as the chromogen. The section was then counterstained with haematoxylin and mounted with DPX.



Western blotting analysis of PRKD1/2/3 (Phospho-S738/S742) expression in HEK293T (A), H446 (B), H1792 (C) whole cell lysates.