

Anti-Phospho-PKC epsilon (S729) Rabbit Polyclonal Antibody



Catalog #: U0679

Aliases

PKCE; Protein kinase C epsilon type; nPKC-epsilon

Background

Gene Name: PRKCE

NCBI Gene Entry: [5581](#)

UniProt Entry: [Q02156](#)

Application Information

Molecular Weight: Predicted, 83 kDa; observed, 82 kDa

Clonality: Rabbit polyclonal antibody

Species Reactivity: Human, mouse, rat, rabbit

Applications Tested: Western blotting (WB), immunocytochemistry (IC)

Immunogen

A synthesized peptide derived from human Phospho-PKC epsilon (S729)

Isotype

Rabbit IgG

Storage Buffer

Supplied in PBS (pH 7.3) containing 30% glycerol, and 0.01% sodium azide.

Storage

Store at -20 °C for one year.

Recommended Dilutions

Western Blotting (WB): 1:500-1:1,000

Immunocytochemistry (IC): 1:100-1:500

Note: This product is for research use only.

Validation Data

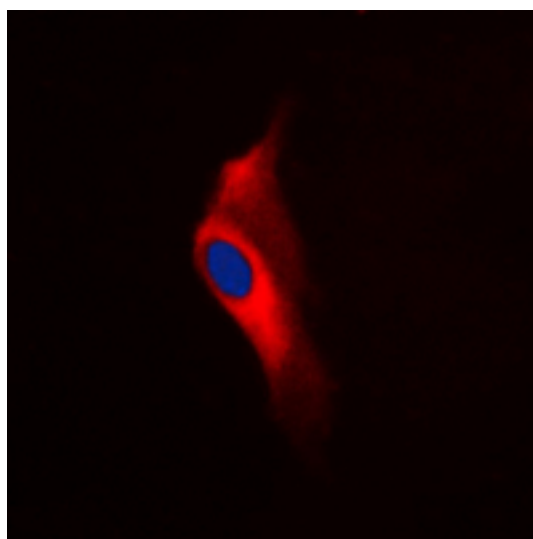
SUPPORT

SUPPORT@GENUINBIOTECH.COM
TEL: +1-540-855-7041

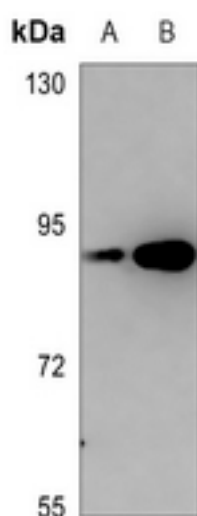
ORDERS

SALES@GENUINBIOTECH.COM
FAX: +1-540-855-7041

WWW.GENUINBIOTECH.COM



Immunocytochemical analysis of PKC epsilon (Phospho-S729) staining in HeLa cells. Formalin-fixed cells were permeabilized with 0.1% Triton X-100 in TBS for 5-10 minutes and blocked with 3% BSA-PBS for 30 minutes at room temperature. Cells were probed with the primary antibody in 3% BSA-PBS and incubated overnight at 4 °C in a humidified chamber. Cells were washed with PBST and incubated with a DyLight 594-conjugated secondary antibody (red) in PBS at room temperature in the dark. DAPI was used to stain the cell nuclei (blue).



Western blotting analysis of PKC epsilon (Phospho-S729) expression in HEK293T (A), H1792 (B) whole cell lysates.