

Anti-Phospho-RSK1/2/3 (T573/570/577) Rabbit Polyclonal Antibody



Catalog #: U0686

Aliases

MAPKAPK1A; RSK1; Ribosomal protein S6 kinase alpha-1; S6K-alpha-1; 90 kDa ribosomal protein S6 kinase 1; p90-RSK 1; p90RSK1; p90S6K; MAP kinase-activated protein kinase 1a; MAPK-activated protein kinase 1a; MAPKAP kinase 1a; MAPKAPK-1a; Ribosomal S6 kinase 1; RSK-1; MAPKAPK1C; RSK3; Ribosomal protein S6 kinase alpha-2; S6K-alpha-2; 90 kDa ribosomal protein S6 kinase 2; p90-RSK 2; p90RSK2; MAP kinase-activated protein kinase 1c; MAPK-activated protein kinase 1c; MAPKAP kinase 1c; MAPKAPK-1c; Ribosomal S6 kinase 3; RSK-3; pp90RSK3; ISPK1; MAPKAPK1B; RSK2; Ribosomal protein S6 kinase alpha-3; S6K-alpha-3; 90 kDa ribosomal protein S6 kinase 3; p90-RSK 3; p90RSK3; Insulin-stimulated protein kinase 1; ISPK-1; MAP kinase-activated protein kinase 1b; MAPK-activated protein kinase 1b; MAPKAP kinase 1b; MAPKAPK-1b; Ribosomal S6 kinase 2; RSK-2; pp90RSK2

Background

Gene Name: RPS6KA1/2/3

NCBI Gene Entry: [6195/6196/6197](#)

UniProt Entry: [Q15418/Q15349/P51812](#)

Application Information

Molecular Weight: Predicted, 82, 83 kDa; observed, 90 kDa

Clonality: Rabbit polyclonal antibody

Species Reactivity: Human, mouse, rat

Applications Tested: Western blotting (WB), immunohistochemistry (IHC), immunocytochemistry (IC)

Immunogen

A synthesized peptide derived from human Phospho-RSK1/2/3 (T573/570/577)

Isotype

Rabbit IgG

Storage Buffer

Supplied in PBS (pH 7.3) containing 30% glycerol, and 0.01% sodium azide.

Storage

Store at -20 °C for one year.

SUPPORT

SUPPORT@GENUINBIOTECH.COM
TEL: +1-540-855-7041

ORDERS

SALES@GENUINBIOTECH.COM
FAX: +1-540-855-7041

WWW.GENUINBIOTECH.COM

Recommended Dilutions

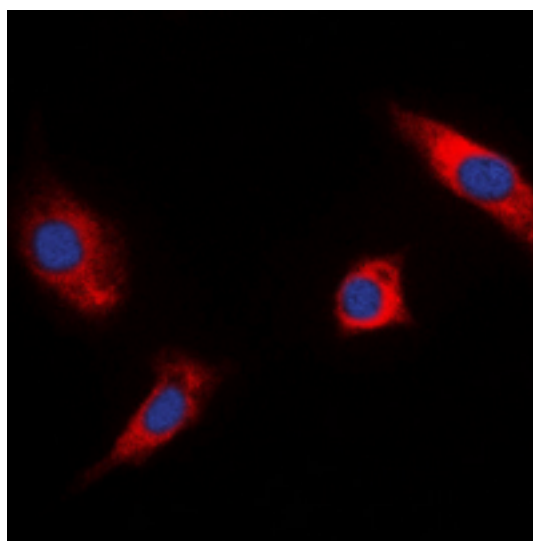
Western Blotting (WB): 1:500-1:1,000

Immunohistochemistry (IHC): 1:100-1:200

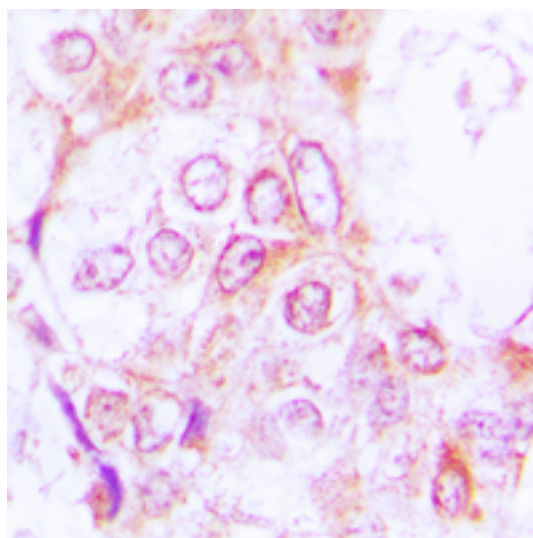
Immunocytochemistry (IC): 1:100-1:500

Note: This product is for research use only.

Validation Data



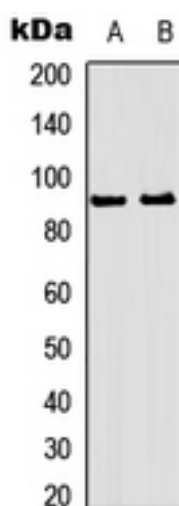
Immunocytochemical analysis of RSK1/2/3 (Phospho-T573/570/577) staining in HeLa cells. Formalin-fixed cells were permeabilized with 0.1% Triton X-100 in TBS for 5-10 minutes and blocked with 3% BSA-PBS for 30 minutes at room temperature. Cells were probed with the primary antibody in 3% BSA-PBS and incubated overnight at 4 °C in a humidified chamber. Cells were washed with PBST and incubated with a DyLight 594-conjugated secondary antibody (red) in PBS at room temperature in the dark. DAPI was used to stain the cell nuclei (blue).



Anti-Phospho-RSK1/2/3 (T573/570/577) Rabbit Polyclonal Antibody

PAGE 3

Immunohistochemical analysis of RSK1/2/3 (Phospho-T573/570/577) staining in human lung cancer formalin fixed paraffin embedded tissue section. The section was pre-treated using heat mediated antigen retrieval with sodium citrate buffer (pH 6.0). The section was then incubated with the antibody at room temperature and detected using an HRP conjugated compact polymer system. DAB was used as the chromogen. The section was then counterstained with haematoxylin and mounted with DPX.



Western blotting analysis of RSK1/2/3 (Phospho-T573/570/577) expression in HeLa (A), HepG2 (B) whole cell lysates.

SUPPORT

SUPPORT@GENUINBIOTECH.COM
TEL: +1-540-855-7041

ORDERS

SALES@GENUINBIOTECH.COM
FAX: +1-540-855-7041

WWW.GENUINBIOTECH.COM