

Anti-Phospho-WEE1 (S642) Rabbit Polyclonal Antibody



Catalog #: U0806

Aliases

Wee1-like protein kinase; WEE1hu; Wee1A kinase

Background

Gene Name: WEE1

NCBI Gene Entry: [7465](#)

UniProt Entry: [P30291](#)

Application Information

Molecular Weight: Predicted, 71 kDa; observed, 72 kDa

Clonality: Rabbit polyclonal antibody

Species Reactivity: Human, mouse, rat

Applications Tested: Western blotting (WB)

Immunogen

A synthesized peptide derived from human Phospho-WEE1 (S642)

Isotype

Rabbit IgG

Storage Buffer

Supplied in PBS (pH 7.3) containing 30% glycerol, and 0.01% sodium azide.

Storage

Store at -20 °C for one year.

Recommended Dilutions

Western Blotting (WB): 1:500-1:1,000

Note: This product is for research use only.

Validation Data

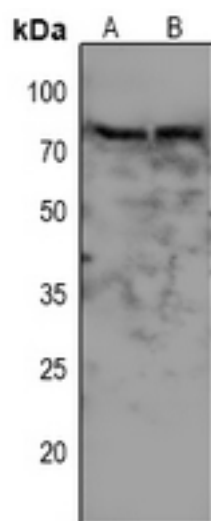
SUPPORT

SUPPORT@GENUINBIOTECH.COM
TEL: +1-540-855-7041

ORDERS

SALES@GENUINBIOTECH.COM
FAX: +1-540-855-7041

WWW.GENUINBIOTECH.COM



Western blotting analysis of WEE1 (Phospho-S642) expression in mouse brain (A), rat brain (B) whole cell lysates.