

Anti-Phospho-EPHA8 (Y615) Rabbit Polyclonal Antibody



Catalog #: U0813

Aliases

EEK; HEK3; KIAA1459; Ephrin type-A receptor 8; EPH- and ELK-related kinase; EPH-like kinase 3; EK3; hEK3; Tyrosine-protein kinase receptor EEK

Background

Gene Name: EPHA8

NCBI Gene Entry: [2046](#)

UniProt Entry: [P29322](#)

Application Information

Molecular Weight: Predicted, 111 kDa; observed, 125 kDa

Clonality: Rabbit polyclonal antibody

Species Reactivity: Human, mouse, rat

Applications Tested: Western blotting (WB)

Immunogen

A synthesized peptide derived from human Phospho-EPHA8 (Y615)

Isotype

Rabbit IgG

Storage Buffer

Supplied in PBS (pH 7.3) containing 30% glycerol, and 0.01% sodium azide.

Storage

Store at -20 °C for one year.

Recommended Dilutions

Western Blotting (WB): 1:500-1:1,000

Note: This product is for research use only.

Validation Data

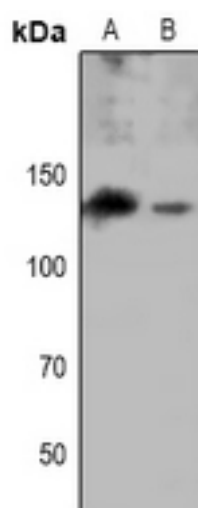
SUPPORT

SUPPORT@GENUINBIOTECH.COM
TEL: +1-540-855-7041

ORDERS

SALES@GENUINBIOTECH.COM
FAX: +1-540-855-7041

WWW.GENUINBIOTECH.COM



Western blotting analysis of EPHA8 (Phospho-Y615) expression in NIH3T3 (A), H9C2 (B) whole cell lysates.