

# Anti-Phospho-NFAT1 (S326) Rabbit Polyclonal Antibody



**Catalog #: U0836**

## Aliases

NFAT1; NFATP; Nuclear factor of activated T-cells cytoplasmic 2; NF-ATc2; NFATc2; NFAT pre-existing subunit; NF-ATp; T-cell transcription factor NFAT1

## Background

Gene Name: NFATC2

NCBI Gene Entry: [4773](#)

UniProt Entry: [Q13469](#)

## Application Information

Molecular Weight: Predicted, 100 kDa; observed, 140 kDa

Clonality: Rabbit polyclonal antibody

Species Reactivity: Human

Applications Tested: Western blotting (WB)

## Immunogen

A synthesized peptide derived from human Phospho-NFAT1 (S326)

## Isotype

Rabbit IgG

## Storage Buffer

Supplied in PBS (pH 7.3) containing 30% glycerol, and 0.01% sodium azide.

## Storage

Store at -20 °C for one year.

## Recommended Dilutions

Western Blotting (WB): 1:500-1:1,000

**Note:** This product is for research use only.

## Validation Data

---

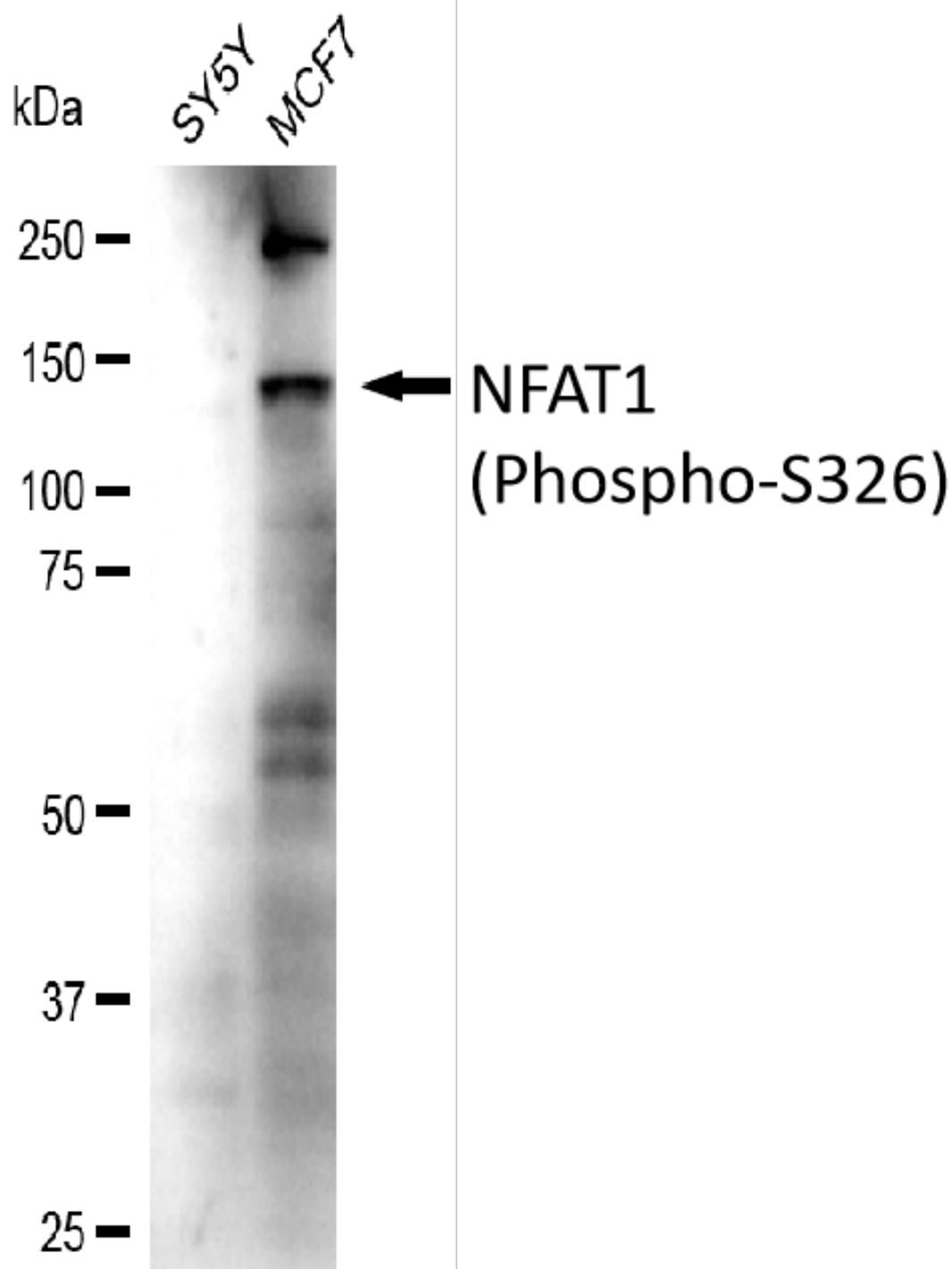
### SUPPORT

SUPPORT@GENUINBIOTECH.COM  
TEL: +1-540-855-7041

### ORDERS

SALES@GENUINBIOTECH.COM  
FAX: +1-540-855-7041

[WWW.GENUINBIOTECH.COM](http://WWW.GENUINBIOTECH.COM)



Copyright ©2025 Genuin Biotechnologies LLC

Western blotting analysis using anti-Phospho-NFAT1 (S326) antibody (Cat#U0836). Total lysates (30 µg) were loaded and separated by SDS-PAGE. The blot was incubated with anti-Phospho-NFAT1 (S326) antibody (Cat#U0836, 1:2,500) and HRP-conjugated goat anti-rabbit secondary antibody (Cat#201, 1:20,000) respectively. Image was developed using FeQ™ ECL Substrate Kit (Cat#226).

**SUPPORT**

SUPPORT@GENUINBIOTECH.COM  
TEL: +1-540-855-7041

**ORDERS**

SALES@GENUINBIOTECH.COM  
FAX: +1-540-855-7041

**WWW.GENUINBIOTECH.COM**