

Anti-Phospho-ABL1/2 (Y393/439) Rabbit Polyclonal Antibody



Catalog #: U0879

Aliases

ABL1; ABL; JTK7; Tyrosine-protein kinase ABL1; Abelson murine leukemia viral oncogene homolog 1; Abelson tyrosine-protein kinase 1; Proto-oncogene c-Abl; p150; ABL2; ABLL; ARG; Abelson tyrosine-protein kinase 2; Abelson murine leukemia viral oncogene homolog 2; Abelson-related gene protein; Tyrosine-protein kinase ARG

Background

Gene Name: ABL1/2

NCBI Gene Entry: [25/27](#)

UniProt Entry: [P00519/P42684](#)

Application Information

Molecular Weight: Predicted, 122, 128 kDa; observed, 210 kDa

Clonality: Rabbit polyclonal antibody

Species Reactivity: Human, mouse, monkey

Applications Tested: Western blotting (WB), immunohistochemistry (IHC)

Immunogen

A synthesized peptide derived from human Phospho-ABL1/2 (Y393/439)

Isotype

Rabbit IgG

Storage Buffer

Supplied in PBS (pH 7.3) containing 30% glycerol, and 0.01% sodium azide.

Storage

Store at -20 °C for one year.

Recommended Dilutions

Western Blotting (WB): 1:500-1:1,000

Immunohistochemistry (IHC): 1:50-1:200

Note: This product is for research use only.

Validation Data

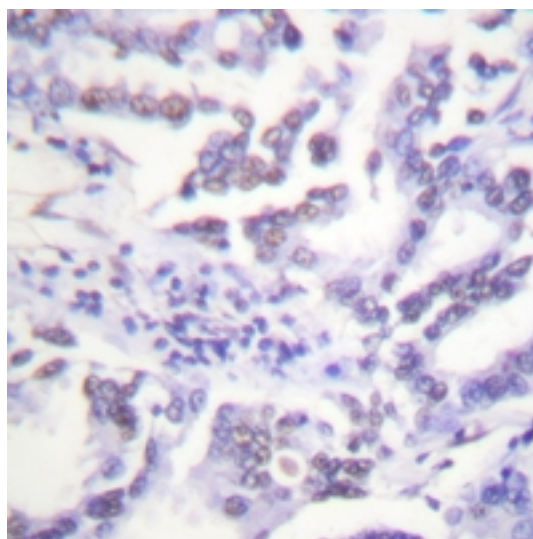
SUPPORT

SUPPORT@GENUINBIOTECH.COM
TEL: +1-540-855-7041

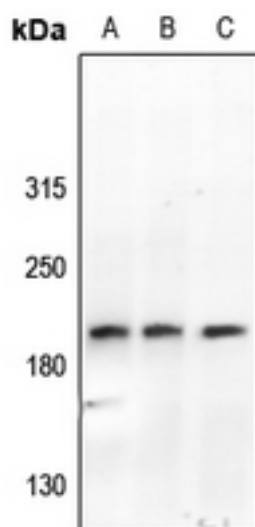
ORDERS

SALES@GENUINBIOTECH.COM
FAX: +1-540-855-7041

WWW.GENUINBIOTECH.COM



Immunohistochemical analysis of ABL1/2 (Phospho-Y393/439) staining in human lung cancer formalin fixed paraffin embedded tissue section. The section was pre-treated using heat mediated antigen retrieval with sodium citrate buffer (pH 6.0). The section was then incubated with the antibody at room temperature and detected using an HRP conjugated compact polymer system. DAB was used as the chromogen. The section was then counterstained with haematoxylin and mounted with DPX.



Western blotting analysis of ABL1/2 (Phospho-Y393/439) expression in AML12 (A), HCT116 (B), LO2 (C) whole cell lysates.