

Anti-Phospho-RGS1/8/16 (Y187/159/168) Rabbit Polyclonal Antibody



Catalog #: U0887

Aliases

RGSR; Regulator of G-protein signaling 16; RGS16; A28-RGS14P; Retinal-specific RGS; RGS-r; hRGS-r; Retinally abundant regulator of G-protein signaling

Background

Gene Name: RGS1/8/16
NCBI Gene Entry: [6004](#)
UniProt Entry: [Q08116/O15492](#)

Application Information

Molecular Weight: Predicted, 23, 22 kDa; observed, 23 kDa
Clonality: Rabbit polyclonal antibody
Species Reactivity: Human, mouse, rat
Applications Tested: Western blotting (WB), immunohistochemistry (IHC)

Immunogen

A synthesized peptide derived from human Phospho-RGS1/8/16 (Y187/159/168)

Isotype

Rabbit IgG

Storage Buffer

Supplied in PBS (pH 7.3) containing 30% glycerol, and 0.01% sodium azide.

Storage

Store at -20 °C for one year.

Recommended Dilutions

Western Blotting (WB): 1:500-1:1,000
Immunohistochemistry (IHC): 1:50-1:100

Note: This product is for research use only.

Validation Data

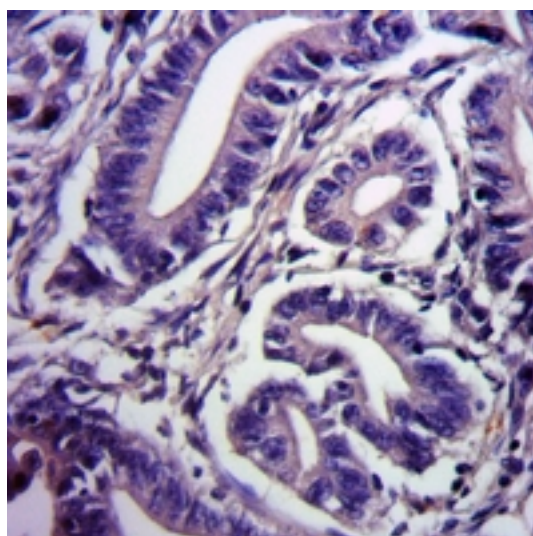
SUPPORT

SUPPORT@GENUINBIOTECH.COM
TEL: +1-540-855-7041

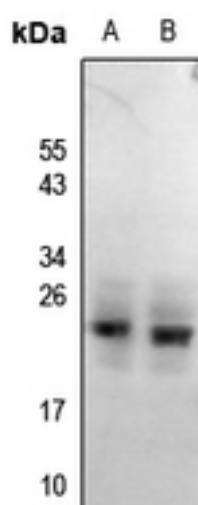
ORDERS

SALES@GENUINBIOTECH.COM
FAX: +1-540-855-7041

WWW.GENUINBIOTECH.COM



Immunohistochemical analysis of RGS1/8/16 (Phospho-Y187/159/168) staining in human colorectal cancer formalin fixed paraffin embedded tissue section. The section was pre-treated using heat mediated antigen retrieval with sodium citrate buffer (pH 6.0). The section was then incubated with the antibody at room temperature and detected using an HRP conjugated compact polymer system. DAB was used as the chromogen. The section was then counterstained with haematoxylin and mounted with DPX.



Western blotting analysis of RGS1/8/16 (Phospho-Y187/159/168) expression in mouse eyes (A), rat eyes (B) whole cell lysates.