

# Anti-Phospho-Glucocorticoid Receptor (S203) Rabbit Polyclonal Antibody



**Catalog #: U0894**

## Aliases

GRL; Glucocorticoid receptor; GR; Nuclear receptor subfamily 3 group C member 1

## Background

Gene Name: NR3C1

NCBI Gene Entry: [2908](#)

UniProt Entry: [P04150](#)

## Application Information

Molecular Weight: Predicted, 85 kDa; observed, 95 kDa

Clonality: Rabbit polyclonal antibody

Species Reactivity: Human, mouse, rat

Applications Tested: Western blotting (WB)

## Immunogen

A synthesized peptide derived from human Phospho-Glucocorticoid Receptor (S203)

## Isotype

Rabbit IgG

## Storage Buffer

Supplied in PBS (pH 7.3) containing 30% glycerol, and 0.01% sodium azide.

## Storage

Store at -20 °C for one year.

## Recommended Dilutions

Western Blotting (WB): 1:500-1:1,000

**Note:** This product is for research use only.

## Validation Data

---

### SUPPORT

SUPPORT@GENUINBIOTECH.COM  
TEL: +1-540-855-7041

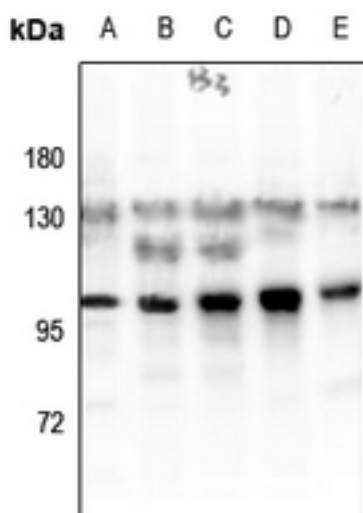
### ORDERS

SALES@GENUINBIOTECH.COM  
FAX: +1-540-855-7041

[WWW.GENUINBIOTECH.COM](http://WWW.GENUINBIOTECH.COM)

## Anti-Phospho-Glucocorticoid Receptor (S203) Rabbit Polyclonal Antibody

PAGE 2



Western blotting analysis of Glucocorticoid Receptor (Phospho-S203) expression in Hela (A), A375 (B), LO2 (C), AML12 (D), PMVEC (E) whole cell lysates.

---

### SUPPORT

SUPPORT@GENUINBIOTECH.COM  
TEL: +1-540-855-7041

### ORDERS

SALES@GENUINBIOTECH.COM  
FAX: +1-540-855-7041

[WWW.GENUINBIOTECH.COM](http://WWW.GENUINBIOTECH.COM)