

# Anti-Phospho-Kv2.1 (S805) Rabbit Polyclonal Antibody



**Catalog #: U0905**

## Aliases

Potassium voltage-gated channel subfamily B member 1; Delayed rectifier potassium channel 1; DRK1; h-DRK1; Voltage-gated potassium channel subunit Kv2.1

## Background

Gene Name: KCNB1

NCBI Gene Entry: [3745](#)

UniProt Entry: [Q14721](#)

## Application Information

Molecular Weight: Predicted, 95 kDa; observed, 96 kDa

Clonality: Rabbit polyclonal antibody

Species Reactivity: Human, mouse, rat, pig

Applications Tested: Western blotting (WB)

## Immunogen

A synthesized peptide derived from human Phospho-Kv2.1 (S805)

## Isotype

Rabbit IgG

## Storage Buffer

Supplied in PBS (pH 7.3) containing 30% glycerol, and 0.01% sodium azide.

## Storage

Store at -20 °C for one year.

## Recommended Dilutions

Western Blotting (WB): 1:500-1:1,000

**Note:** This product is for research use only.

## Validation Data

---

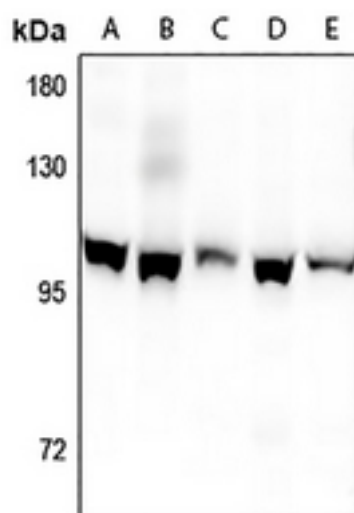
### SUPPORT

SUPPORT@GENUINBIOTECH.COM  
TEL: +1-540-855-7041

### ORDERS

SALES@GENUINBIOTECH.COM  
FAX: +1-540-855-7041

[WWW.GENUINBIOTECH.COM](http://WWW.GENUINBIOTECH.COM)



Western blotting analysis of Kv2.1 (Phospho-S805) expression in CT26 (A), C6 (B), Panc1 (C), A549 (D), U87MG (E) whole cell lysates.