

Anti-Phospho-ATRIP (S68) Rabbit Polyclonal Antibody



Catalog #: U0945

Aliases

AGS1; ATR-interacting protein; ATM and Rad3-related-interacting protein

Background

Gene Name: ATRIP

NCBI Gene Entry: [84126](#)

UniProt Entry: [Q8WXE1](#)

Application Information

Molecular Weight: Predicted, 85 kDa; observed, 86 kDa

Clonality: Rabbit polyclonal antibody

Species Reactivity: Human, mouse, rat

Applications Tested: Western blotting (WB)

Immunogen

A synthesized peptide derived from human Phospho-ATRIP (S68)

Isotype

Rabbit IgG

Storage Buffer

Supplied in PBS (pH 7.3) containing 30% glycerol, and 0.01% sodium azide.

Storage

Store at -20 °C for one year.

Recommended Dilutions

Western Blotting (WB): 1:500-1:1,000

Note: This product is for research use only.

Validation Data

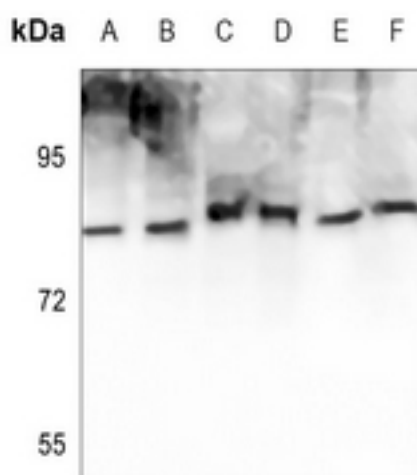
SUPPORT

SUPPORT@GENUINBIOTECH.COM
TEL: +1-540-855-7041

ORDERS

SALES@GENUINBIOTECH.COM
FAX: +1-540-855-7041

WWW.GENUINBIOTECH.COM



Western blotting analysis of ATRIP (Phospho-S68) expression in HCT116 (A), A375 (B), mouse liver (C), mouse muscle (D), rat liver (E), rat muscle (F) whole cell lysates.