

Anti-Phospho-Claudin 7 (Y210) Rabbit Polyclonal Antibody



Catalog #: U0953

Aliases

CEPTRL2; CPETRL2; Claudin-7; CLDN-7

Background

Gene Name: CLDN7

NCBI Gene Entry: [1366](#)

UniProt Entry: [O95471](#)

Application Information

Molecular Weight: Predicted, 22 kDa; observed, 27 kDa

Clonality: Rabbit polyclonal antibody

Species Reactivity: Human, rat

Applications Tested: Western blotting (WB)

Immunogen

A synthesized peptide derived from human Phospho-Claudin 7 (Y210)

Isotype

Rabbit IgG

Storage Buffer

Supplied in PBS (pH 7.3) containing 30% glycerol, and 0.01% sodium azide.

Storage

Store at -20 °C for one year.

Recommended Dilutions

Western Blotting (WB): 1:500-1:1,000

Note: This product is for research use only.

Validation Data

SUPPORT

SUPPORT@GENUINBIOTECH.COM
TEL: +1-540-855-7041

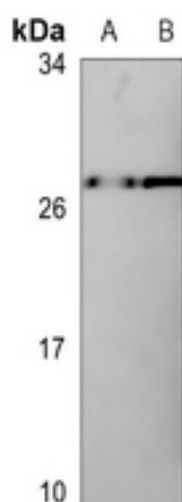
ORDERS

SALES@GENUINBIOTECH.COM
FAX: +1-540-855-7041

WWW.GENUINBIOTECH.COM

Anti-Phospho-Claudin 7 (Y210) Rabbit Polyclonal Antibody

PAGE 2



Western blotting analysis of Claudin 7 (Phospho-Y210) expression in rat liver (A), rat kidney (B) whole cell lysates.

SUPPORT

SUPPORT@GENUINBIOTECH.COM
TEL: +1-540-855-7041

ORDERS

SALES@GENUINBIOTECH.COM
FAX: +1-540-855-7041

WWW.GENUINBIOTECH.COM