

# Anti-Phospho-STING (S366) Rabbit Polyclonal Antibody



**Catalog #: U0957**

## Aliases

ERIS; MITA; STING; TMEM173; Stimulator of interferon genes protein; hSTING; Endoplasmic reticulum interferon stimulator; ERIS; Mediator of IRF3 activation; hMITA; Transmembrane protein 173

## Background

Gene Name: STING1

NCBI Gene Entry: [340061](#)

UniProt Entry: [Q86WV6](#)

## Application Information

Molecular Weight: Predicted, 42 kDa; Observed, 33 kDa

Clonality: Rabbit polyclonal antibody

Species Reactivity: Human, mouse, rat

Applications Tested: Western blotting (WB)

## Immunogen

A synthesized peptide derived from human Phospho-STING (S366)

## Isotype

Rabbit IgG

## Storage Buffer

Supplied in PBS containing 50% glycerol, 0.5% BSA and 0.02% sodium azide.

## Storage

Store at -20 °C for one year.

## Recommended Dilutions

Western Blotting (WB): 1:500-1:2,500

**Note:** This product is for research use only.

## Validation Data

---

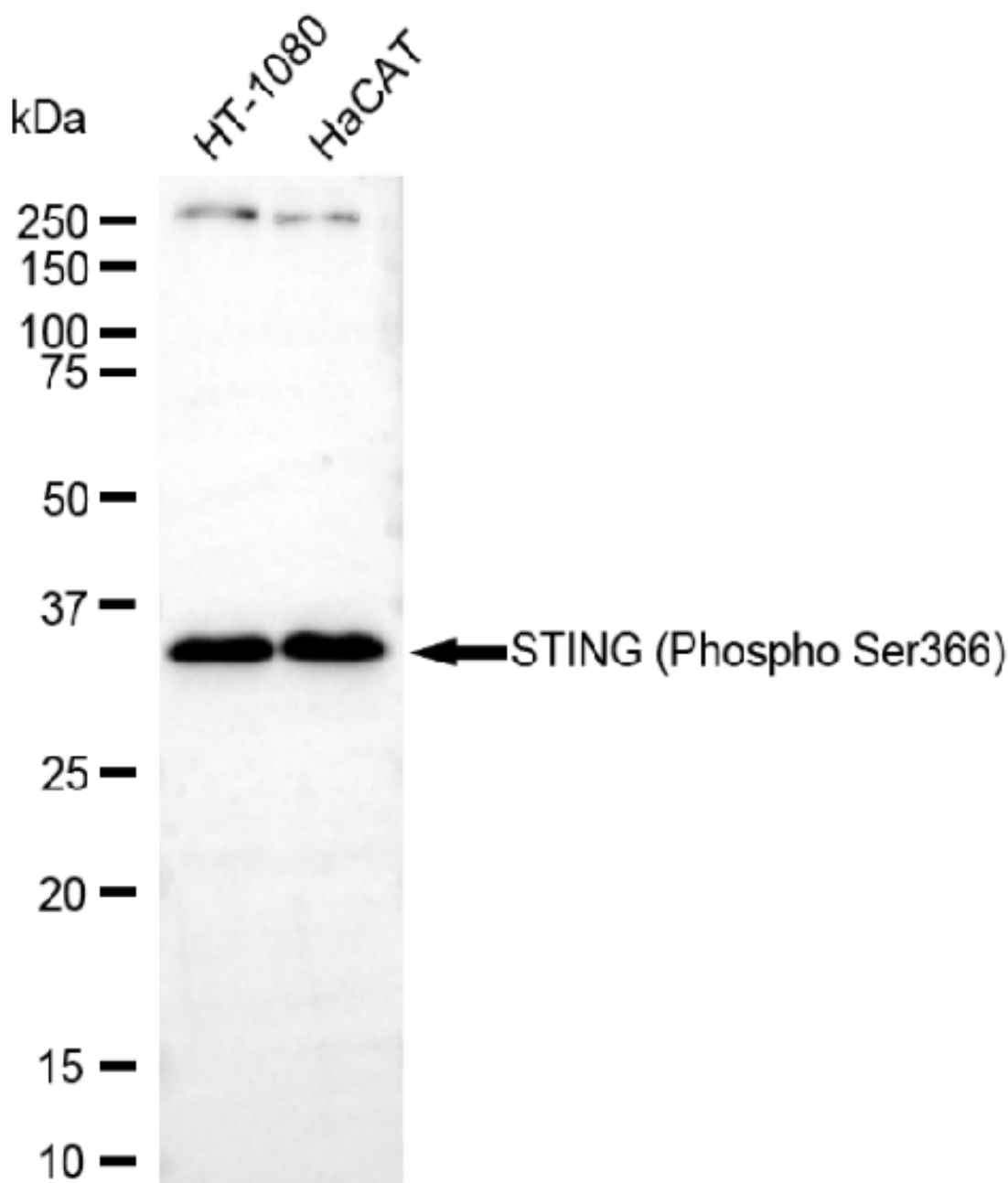
### SUPPORT

SUPPORT@GENUINBIOTECH.COM  
TEL: +1-540-855-7041

### ORDERS

SALES@GENUINBIOTECH.COM  
FAX: +1-540-855-7041

[WWW.GENUINBIOTECH.COM](http://WWW.GENUINBIOTECH.COM)



Copyright ©2025 Genuin Biotechnologies LLC

Western blotting analysis using anti-phospho-STING (S366) antibody (Cat#U0957). Total lysates (30  $\mu$ g) were loaded and separated by SDS-PAGE. The blot was incubated with anti-phospho-STING (S366) antibody (Cat#U0957, 1:2,500) and HRP-conjugated goat anti-rabbit secondary antibody (Cat#201, 1:20,000) respectively. Image was developed using FeQ™ ECL Substrate Kit (Cat#226).