

# Anti-Phospho-Rac 1 (S71) Rabbit Polyclonal Antibody



**Catalog #: U1041**

## Aliases

TC25; Ras-related C3 botulinum toxin substrate 1; Cell migration-inducing gene 5 protein; Ras-like protein TC25; p21-Rac1

## Background

Gene Name: RAC1

NCBI Gene Entry: [5879](#)

UniProt Entry: [P63000](#)

## Application Information

Molecular Weight: Predicted, 21 kDaa; observed, 27 kDaa

Clonality: Rabbit polyclonal antibody

Species Reactivity: Human, mouse, rat

Applications Tested: Western blotting (WB)

## Immunogen

A synthesized peptide derived from human Phospho-Rac 1 (S71)

## Isotype

Rabbit IgG

## Storage Buffer

Supplied in PBS containing 50% glycerol, 0.5% BSA and 0.02% sodium azide.

## Storage

Store at -20 °C for one year.

## Recommended Dilutions

Western Blotting (WB): 1:500-1:2,000

**Note:** This product is for research use only.

## Validation Data

---

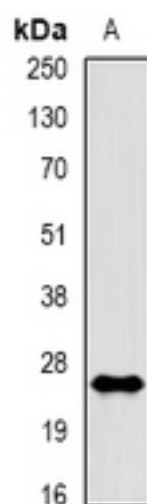
### SUPPORT

SUPPORT@GENUINBIOTECH.COM  
TEL: +1-540-855-7041

### ORDERS

SALES@GENUINBIOTECH.COM  
FAX: +1-540-855-7041

[WWW.GENUINBIOTECH.COM](http://WWW.GENUINBIOTECH.COM)



Western blotting analysis of Rac 1 (Phospho-S71) expression in A431 EGF-treated (A) whole cell lysates.