

# Anti-Phospho-ERK1/2 (T202/T185) Rabbit Monoclonal Antibody



**Catalog #: U1042**

## Aliases

MAPK3; ERK1; PRKM3; Mitogen-activated protein kinase 3; MAP kinase 3; MAPK 3; ERT2; Extracellular signal-regulated kinase 1; ERK-1; Insulin-stimulated MAP2 kinase; MAP kinase isoform p44; p44-MAPK; Microtubule-associated protein 2 kinase; p44-ERK1; MAPK1; ERK2; PRKM1; PRKM2; Mitogen-activated protein kinase 1; MAP kinase 1; MAPK 1; ERT1; Extracellular signal-regulated kinase 2; ERK-2; MAP kinase isoform p42; p42-MAPK; Mitogen-activated protein kinase 2; MAP kinase 2; MAPK 2

## Background

Gene Name: MAPK1/3

NCBI Gene Entry: [5595/5594](#)

UniProt Entry: [P27361/P28482](#)

## Application Information

Molecular Weight: Predicted, 44,42 kDa; observed, 44,42 kDa

Clonality: Rabbit monoclonal antibody

Clone ID: 24GB7750

Species Reactivity: Human, rat, hamster

Applications Tested: Western blotting (WB), immunoprecipitation (IP)

## Immunogen

A synthesized peptide derived from human Phospho-ERK1/2 (T202/T185)

## Isotype

Rabbit IgG

## Storage Buffer

Supplied in PBS (pH 7.4) containing 50% glycerol, 0.05% BSA and 0.01% sodium azide.

## Storage

Store at -20 °C for one year.

## Recommended Dilutions

Western Blotting (WB): 1:500-1:1,000

Immunoprecipitation (IP): 1:10-1:50

---

### SUPPORT

SUPPORT@GENUINBIOTECH.COM  
TEL: +1-540-855-7041

### ORDERS

SALES@GENUINBIOTECH.COM  
FAX: +1-540-855-7041

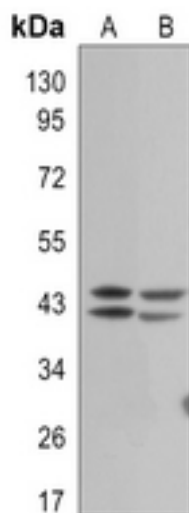
[WWW.GENUINBIOTECH.COM](http://WWW.GENUINBIOTECH.COM)

## Anti-Phospho-ERK1/2 (T202/T185) Rabbit Monoclonal Antibody

PAGE 2

**Note:** This product is for research use only.

### Validation Data



Western blotting analysis of ERK1/2 (Phospho-T202/T185) expression in C6 (A), CHOK1 (B) whole cell lysates.

#### SUPPORT

SUPPORT@GENUINBIOTECH.COM  
TEL: +1-540-855-7041

#### ORDERS

SALES@GENUINBIOTECH.COM  
FAX: +1-540-855-7041

[WWW.GENUINBIOTECH.COM](http://WWW.GENUINBIOTECH.COM)