

Anti-Phospho-4EBP1 (T46) Rabbit Monoclonal Antibody



Catalog #: U1047

Aliases

Eukaryotic translation initiation factor 4E-binding protein 1; 4E-BP1; eIF4E-binding protein 1; Phosphorylated heat- and acid-stable protein regulated by insulin 1; PHAS-I

Background

Gene Name: EIF4EBP1

NCBI Gene Entry: [1978](#)

UniProt Entry: [Q13541](#)

Application Information

Molecular Weight: Predicted, 13 kDa; observed, 15-20 kDa

Clonality: Rabbit monoclonal antibody

Clone ID: 24GB7775

Species Reactivity: Human, mouse, rat

Applications Tested: Western blotting (WB), immunohistochemistry (IHC), immunoprecipitation (IP)

Immunogen

A synthesized peptide derived from human Phospho-4EBP1 (T46)

Isotype

Rabbit IgG

Storage Buffer

Supplied in PBS (pH 7.4) containing 50% glycerol, 0.05% BSA and 0.01% sodium azide.

Storage

Store at -20 °C for one year.

Recommended Dilutions

Western Blotting (WB): 1:500-1:1,000

Immunohistochemistry (IHC): 1:50-1:100

Immunoprecipitation (IP): 1:10-1:50

Note: This product is for research use only.

SUPPORT

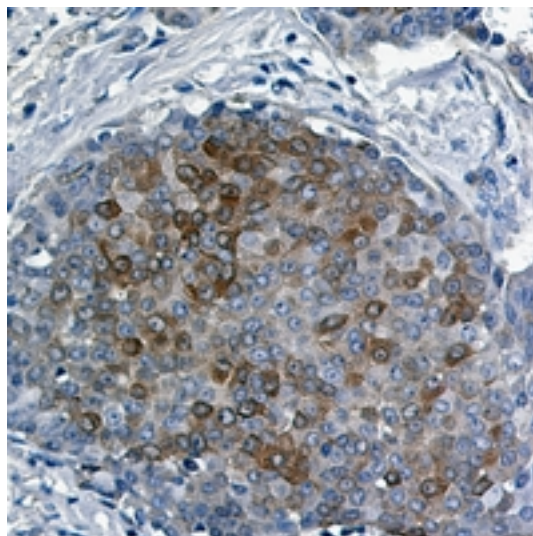
SUPPORT@GENUINBIOTECH.COM
TEL: +1-540-855-7041

ORDERS

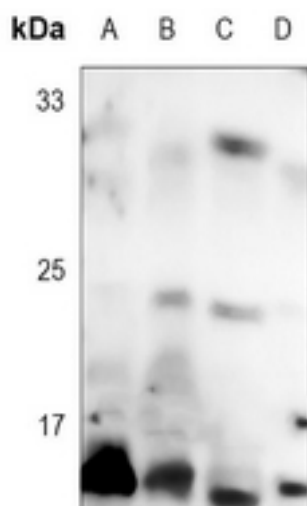
SALES@GENUINBIOTECH.COM
FAX: +1-540-855-7041

WWW.GENUINBIOTECH.COM

Validation Data



Immunohistochemical analysis of 4EBP1 (Phospho-T46) staining in human breast carcinoma formalin fixed paraffin embedded tissue section. The section was pre-treated using heat mediated antigen retrieval with sodium citrate buffer (pH 6.0). The section was then incubated with the antibody at room temperature and detected using an HRP conjugated compact polymer system. DAB was used as the chromogen. The section was then counterstained with haematoxylin and mounted with DPX.



Western blotting analysis of 4EBP1 (Phospho-T46) expression in K562 (A), C6 (B), NIH3T3 (C), HeLa (D) whole cell lysates.