

# Anti-Phospho-AKT (S473) Rabbit Monoclonal Antibody



**Catalog #: U1052**

## Aliases

PKB; RAC; RAC-alpha serine/threonine-protein kinase; Protein kinase B; PKB; Protein kinase B alpha; PKB alpha; Proto-oncogene c-Akt; RAC-PK-alpha

## Background

Gene Name: AKT1

NCBI Gene Entry: [207](#)

UniProt Entry: [P31749](#)

## Application Information

Molecular Weight: Predicted, 56 kDa; observed, 56 kDa

Clonality: Rabbit monoclonal antibody

Clone ID: 24GB7800

Species Reactivity: Human, mouse, rat

Applications Tested: Western blotting (WB)

## Immunogen

A synthesized peptide derived from human Phospho-AKT (S473)

## Isotype

Rabbit IgG

## Storage Buffer

Supplied in PBS (pH 7.4) containing 50% glycerol, 0.05% BSA and 0.01% sodium azide.

## Storage

Store at -20 °C for one year.

## Recommended Dilutions

Western Blotting (WB): 1:500-1:1,000

**Note:** This product is for research use only.

## Validation Data

---

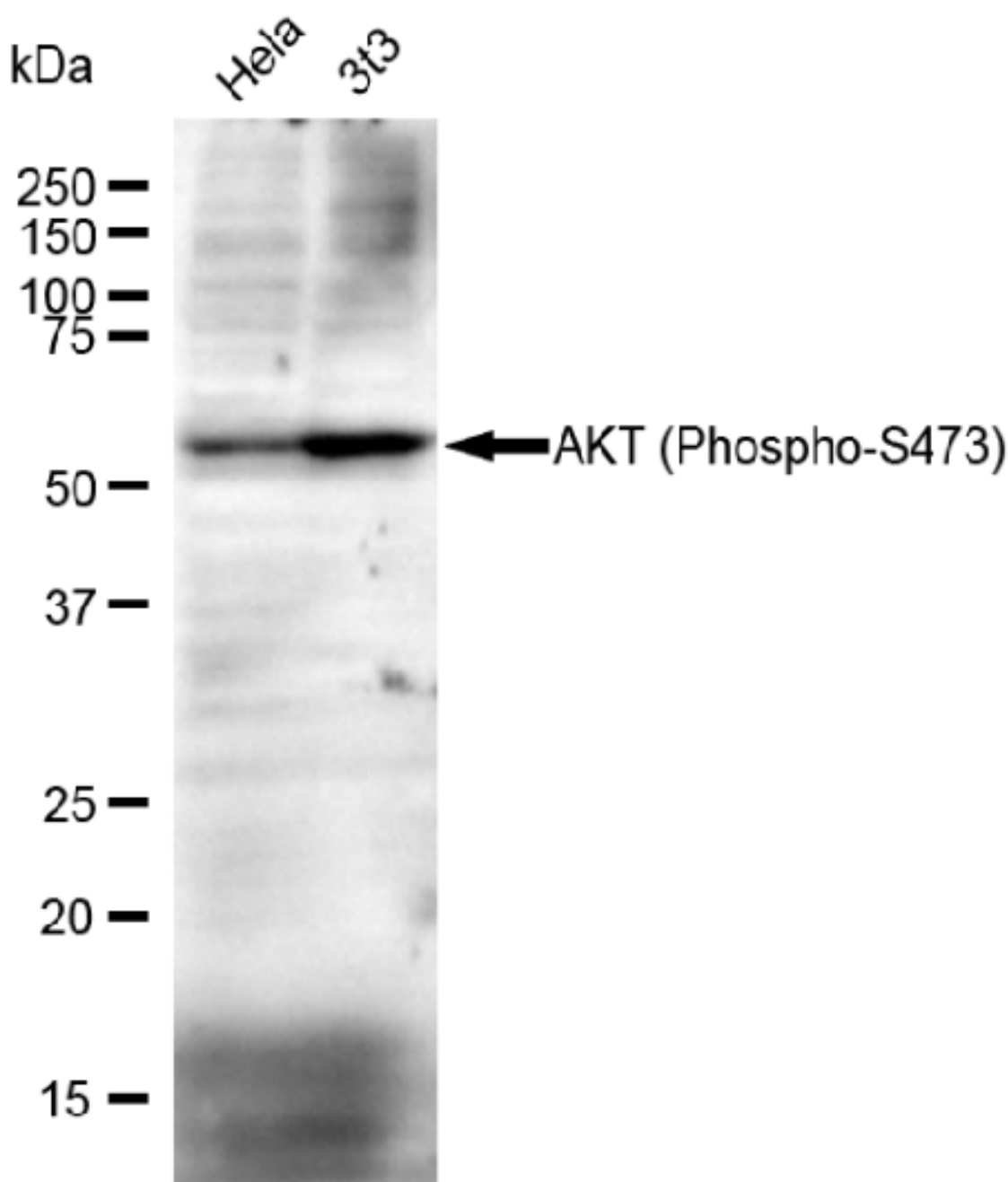
### SUPPORT

SUPPORT@GENUINBIOTECH.COM  
TEL: +1-540-855-7041

### ORDERS

SALES@GENUINBIOTECH.COM  
FAX: +1-540-855-7041

[WWW.GENUINBIOTECH.COM](http://WWW.GENUINBIOTECH.COM)



Copyright ©2025 Genuin Biotechnologies LLC

Western blotting analysis using anti-Phospho-AKT (S473) antibody (Cat#U1052). Total lysates (30 µg) were loaded and separated by SDS-PAGE. The blot was incubated with anti-Phospho-AKT (S473) antibody (Cat#U1052, 1:2,500) and HRP-conjugated goat anti-rabbit secondary antibody (Cat#201, 1:20,000) respectively. Image was developed using FeQ™ ECL Substrate Kit (Cat#226).

**SUPPORT**

SUPPORT@GENUINBIOTECH.COM  
TEL: +1-540-855-7041

**ORDERS**

SALES@GENUINBIOTECH.COM  
FAX: +1-540-855-7041

**WWW.GENUINBIOTECH.COM**