

Anti-Phospho-Filamin A/B (S2152/2107) Rabbit Monoclonal Antibody



Catalog #: U1059

Aliases

FLN1L; FLN3; TABP; TAP; Filamin-B; FLN-B; ABP-278; ABP-280 homolog; Actin-binding-like protein; Beta-filamin; Filamin homolog 1; Fh1; Filamin-3; Thyroid autoantigen; Truncated actin-binding protein; Truncated ABP

Background

Gene Name: FLNB

NCBI Gene Entry: [2317](#)

UniProt Entry: [O75369](#)

Application Information

Molecular Weight: Predicted, 278 kDa; observed, 281 kDa

Clonality: Rabbit monoclonal antibody

Clone ID: 24GB7835

Species Reactivity: Human, rat

Applications Tested: Western blotting (WB), immunohistochemistry (IHC), immunocytochemistry (IC)

Immunogen

A synthesized peptide derived from human Phospho-Filamin A/B (S2152/2107)

Isotype

Rabbit IgG

Storage Buffer

Supplied in PBS (pH 7.4) containing 50% glycerol, 0.05% BSA and 0.01% sodium azide.

Storage

Store at -20 °C for one year.

Recommended Dilutions

Western Blotting (WB): 1:500-1:1,000

Immunohistochemistry (IHC): 1:50-1:100

Immunocytochemistry (IC): 1:50-1:100

SUPPORT

SUPPORT@GENUINBIOTECH.COM
TEL: +1-540-855-7041

ORDERS

SALES@GENUINBIOTECH.COM
FAX: +1-540-855-7041

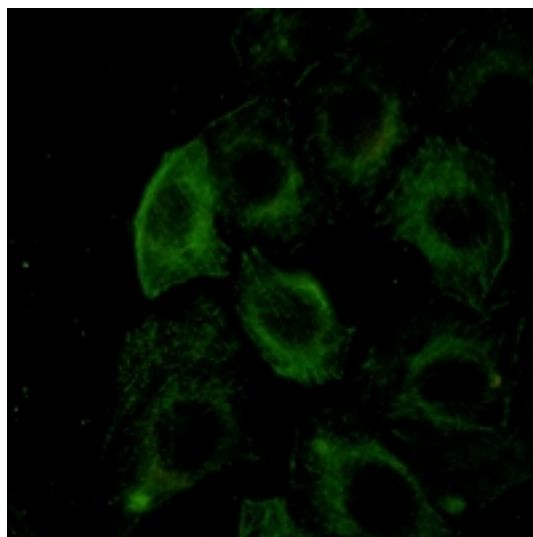
WWW.GENUINBIOTECH.COM

Anti-Phospho-Filamin A/B (S2152/2107) Rabbit Monoclonal Antibody

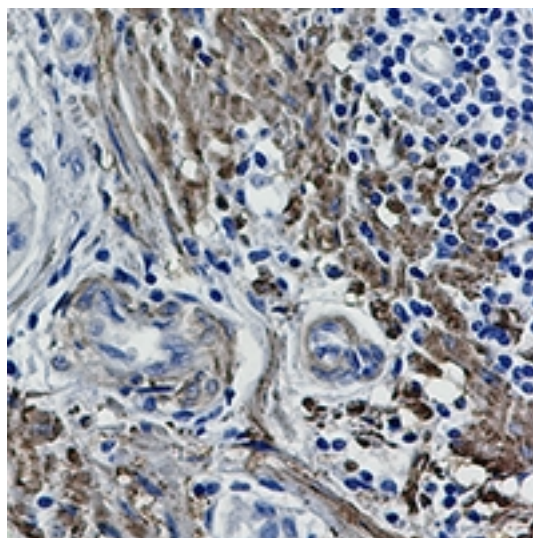
PAGE 2

Note: This product is for research use only.

Validation Data



Immunocytochemical analysis of Filamin A/B (Phospho-S2152/2107) staining in A549 cells. Formalin-fixed cells were permeabilized with 0.1% Triton X-100 in TBS for 5-10 minutes and blocked with 3% BSA-PBS for 30 minutes at room temperature. Cells were probed with the primary antibody in 3% BSA-PBS and incubated overnight at 4 °C in a humidified chamber. Cells were washed with PBST and incubated with a AF488-conjugated secondary antibody (green) in PBS at room temperature in the dark.



Immunohistochemical analysis of Filamin A/B (Phospho-S2152/2107) staining in human cholangiocarcinoma formalin fixed paraffin embedded tissue section. The section was pre-treated using heat mediated antigen retrieval with sodium citrate buffer (pH 6.0). The section was then incubated with the antibody at room temperature and detected using an HRP conjugated compact polymer system. DAB was used as the chromogen. The section was then counterstained with

SUPPORT

SUPPORT@GENUINBIOTECH.COM
TEL: +1-540-855-7041

ORDERS

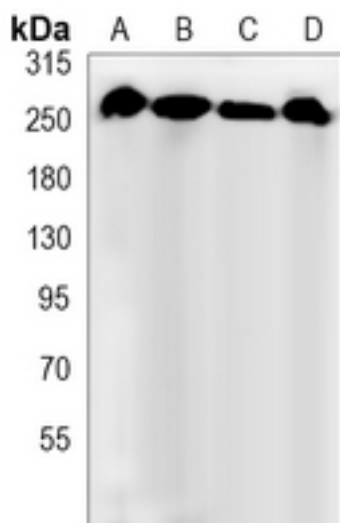
SALES@GENUINBIOTECH.COM
FAX: +1-540-855-7041

WWW.GENUINBIOTECH.COM

Anti-Phospho-Filamin A/B (S2152/2107) Rabbit Monoclonal Antibody

PAGE 3

haematoxylin and mounted with DPX.



Western blotting analysis of Filamin A/B (Phospho-S2152/2107) expression in HeLa (A), A549 (B), U2OS (C), C6 (D) whole cell lysates.

SUPPORT

SUPPORT@GENUINBIOTECH.COM
TEL: +1-540-855-7041

ORDERS

SALES@GENUINBIOTECH.COM
FAX: +1-540-855-7041

WWW.GENUINBIOTECH.COM