

# Anti-Phospho-Catenin- $\beta$ (Y654) Rabbit Polyclonal Antibody



**Catalog #: U1073**

## Aliases

CTNNB1; CTNNB; OK/SW-cl.35; Catenin beta-1; Beta-catenin

## Background

Gene Name: CTNNB1/CTNNB/OK/SW-cl.35/PRO2286

NCBI Gene Entry: [1499](#)

UniProt Entry: [P35222](#)

## Application Information

Molecular Weight: Predicted, 85 kDa; observed, 92 kDa

Clonality: Rabbit polyclonal antibody

Species Reactivity: Human, mouse, rat

Applications Tested: Western blotting (WB), immunohistochemistry (IHC), immunocytochemistry (IC)

## Immunogen

A synthesized peptide derived from human Phospho-Catenin- $\beta$  (Tyr654)

## Isotype

Rabbit IgG

## Storage Buffer

Supplied in PBS containing 50% glycerol, 0.5% BSA and 0.02% sodium azide.

## Storage

Store at -20 °C for one year.

## Recommended Dilutions

Western Blotting (WB): 1:500-1:2,000

Immunohistochemistry (IHC): 1:100-1:300

Immunocytochemistry (IC): 1:50-1:200

**Note:** This product is for research use only.

## Validation Data

---

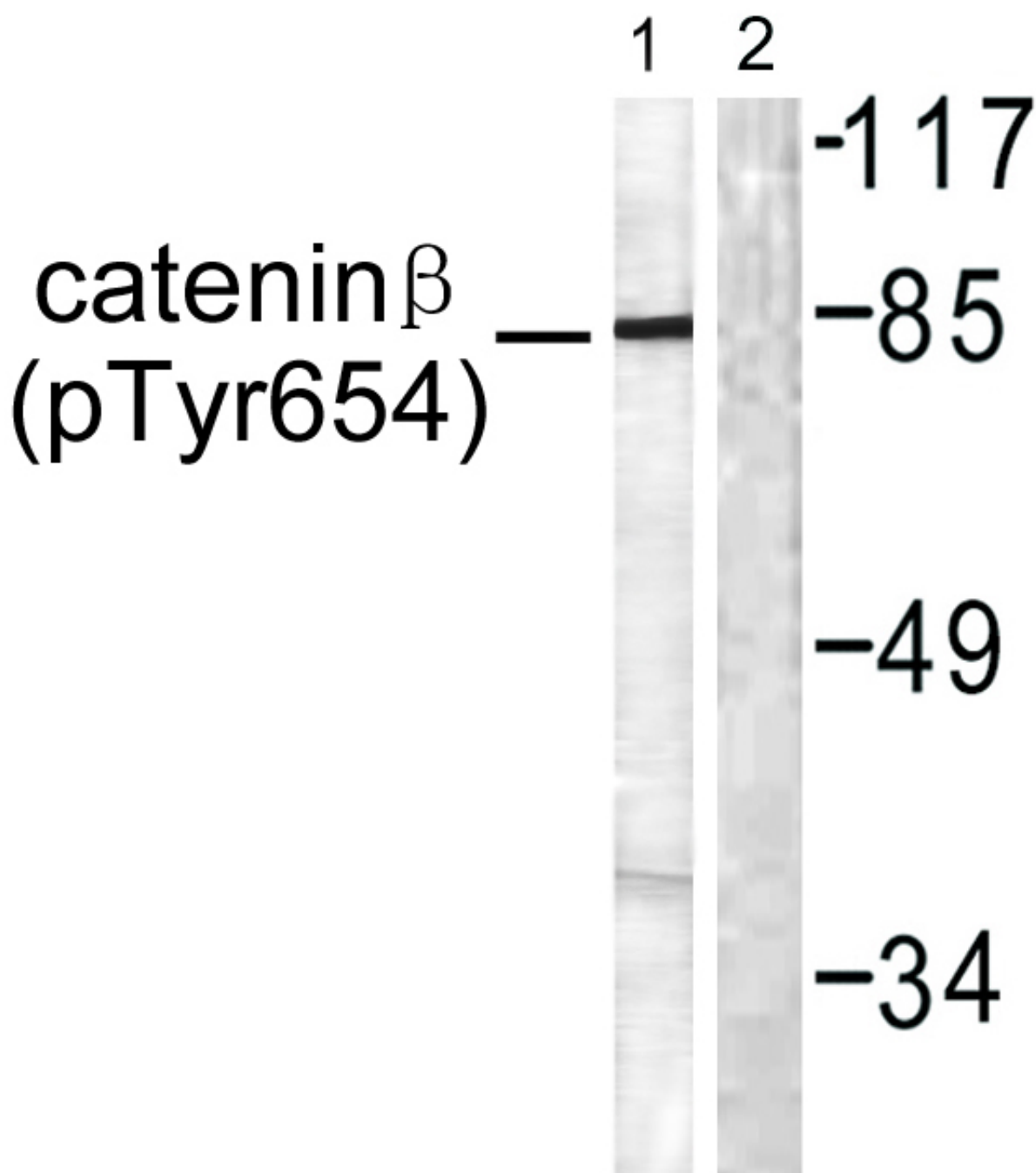
### SUPPORT

SUPPORT@GENUINBIOTECH.COM  
TEL: +1-540-855-7041

### ORDERS

SALES@GENUINBIOTECH.COM  
FAX: +1-540-855-7041

[WWW.GENUINBIOTECH.COM](http://WWW.GENUINBIOTECH.COM)



Western blotting analysis of lysates from 293 cells, using Catenin-beta (Phospho-Tyr654) Antibody. The lane on the right is blocked with the phospho peptide.