

Anti-Phospho-EGFR (S1070) Rabbit Polyclonal Antibody



Catalog #: U1077

Aliases

EGFR; ERBB; ERBB1; HER1; Epidermal growth factor receptor; Proto-oncogene c-ErbB-1; Receptor tyrosine-protein kinase erbB-1

Background

Gene Name: EGFR

NCBI Gene Entry: [1956](#)

UniProt Entry: [P00533](#)

Application Information

Molecular Weight: Predicted, 134 kDa; observed, 175 kDa

Clonality: Rabbit polyclonal antibody

Species Reactivity: Human, mouse, rat

Applications Tested: Western blotting (WB), immunohistochemistry (IHC), immunocytochemistry (IC)

Immunogen

A synthesized peptide derived from human Phospho-EGFR (Ser1070)

Isotype

Rabbit IgG

Storage Buffer

Supplied in PBS containing 50% glycerol, 0.5% BSA and 0.02% sodium azide.

Storage

Store at -20 °C for one year.

Recommended Dilutions

Western Blotting (WB): 1:500-1:2,000

Immunohistochemistry (IHC): 1:100-1:300

Immunocytochemistry (IC): 1:50-1:200

Note: This product is for research use only.

Validation Data

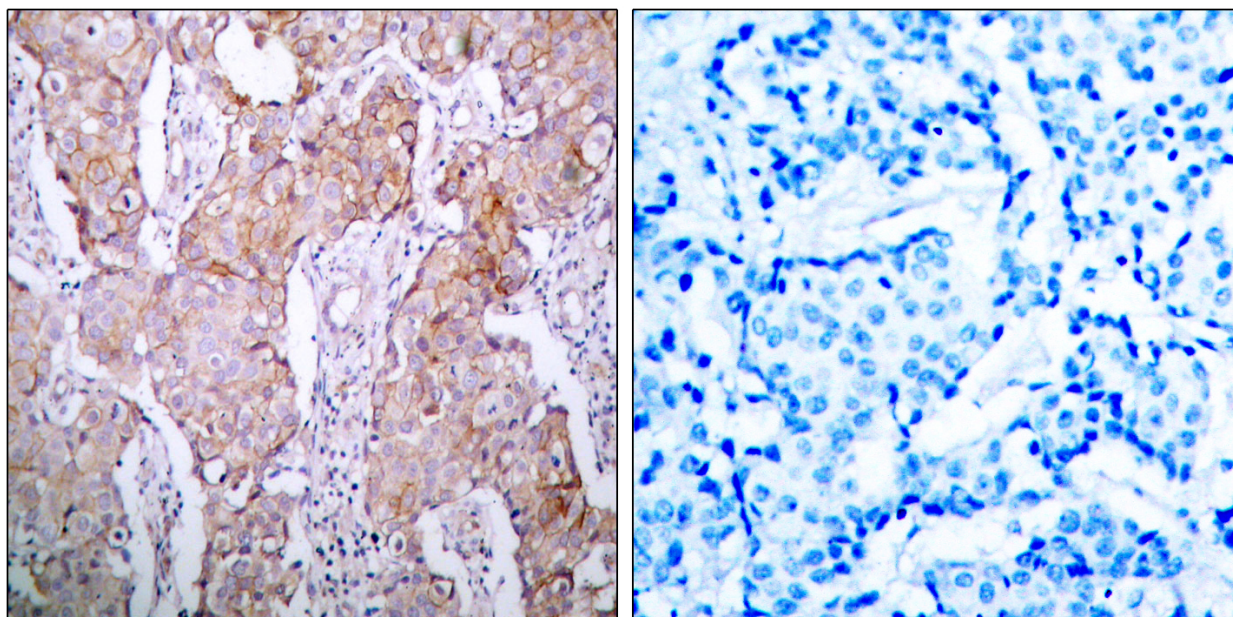
SUPPORT

SUPPORT@GENUINBIOTECH.COM
TEL: +1-540-855-7041

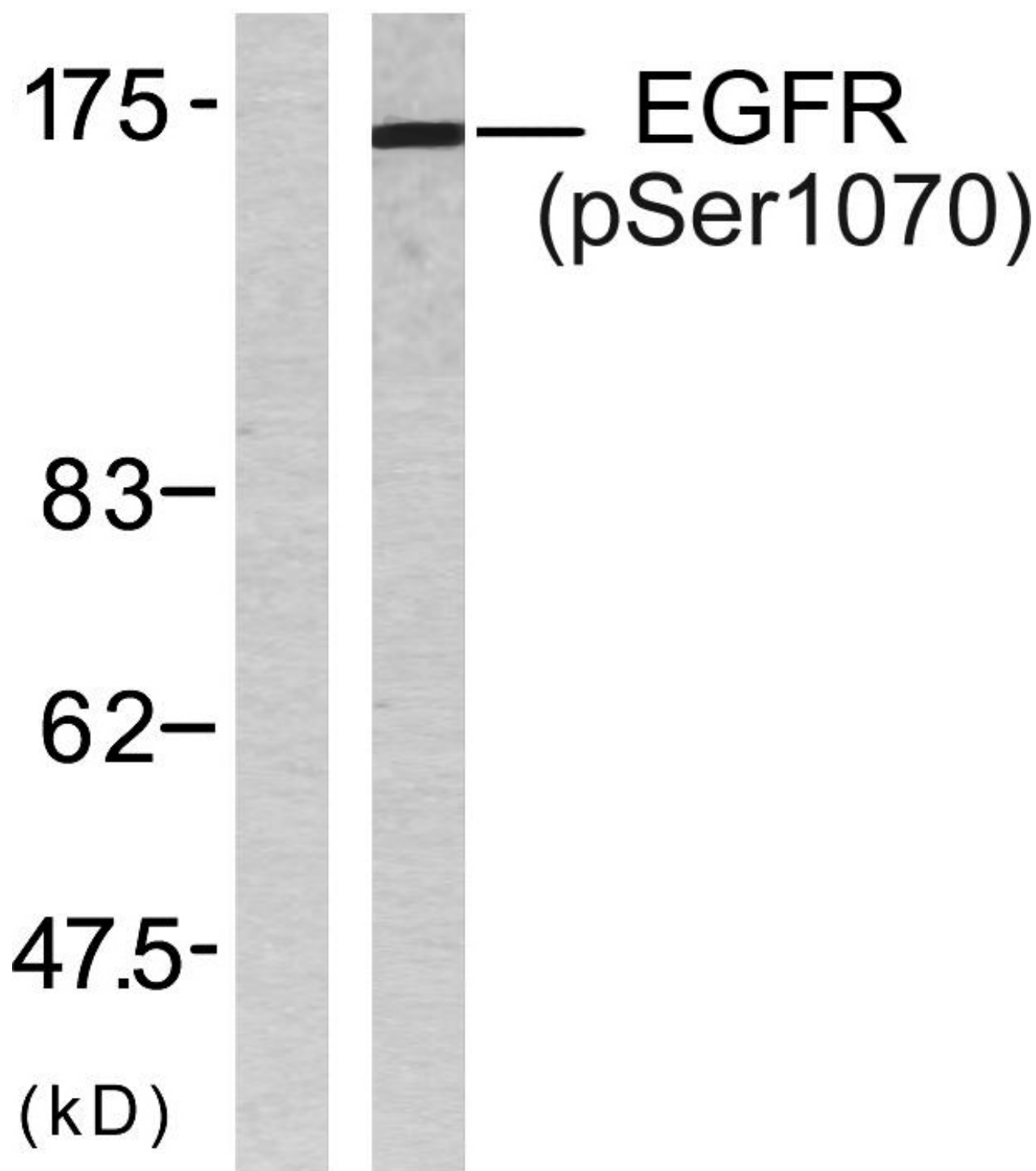
ORDERS

SALES@GENUINBIOTECH.COM
FAX: +1-540-855-7041

WWW.GENUINBIOTECH.COM



Immunohistochemistry analysis of paraffin-embedded human breast carcinoma, using EGFR (Phospho-Ser1070) Antibody. The picture on the right is blocked with the phospho peptide.



Western blotting analysis of lysates from SK-OV3 cells treated with EGF, using EGFR (Phospho-Ser1070) Antibody. The lane on the left is blocked with the phospho peptide.

SUPPORT

SUPPORT@GENUINBIOTECH.COM
TEL: +1-540-855-7041

ORDERS

SALES@GENUINBIOTECH.COM
FAX: +1-540-855-7041

WWW.GENUINBIOTECH.COM