

Anti-Phospho-EGFR (Y1172) Rabbit Polyclonal Antibody



Catalog #: U1078

Aliases

EGFR; ERBB; ERBB1; HER1; Epidermal growth factor receptor; Proto-oncogene c-ErbB-1; Receptor tyrosine-protein kinase erbB-1

Background

Gene Name: EGFR

NCBI Gene Entry: [1956](#)

UniProt Entry: [P00533](#)

Application Information

Molecular Weight: Predicted, 134 kDa; observed, 175 kDa

Clonality: Rabbit polyclonal antibody

Species Reactivity: Human, mouse, rat

Applications Tested: Western blotting (WB)

Immunogen

A synthesized peptide derived from human Phospho-EGFR (Tyr1172)

Isotype

Rabbit IgG

Storage Buffer

Supplied in PBS containing 50% glycerol, 0.5% BSA and 0.02% sodium azide.

Storage

Store at -20 °C for one year.

Recommended Dilutions

Western Blotting (WB): 1:500-1:2,000

Note: This product is for research use only.

Validation Data

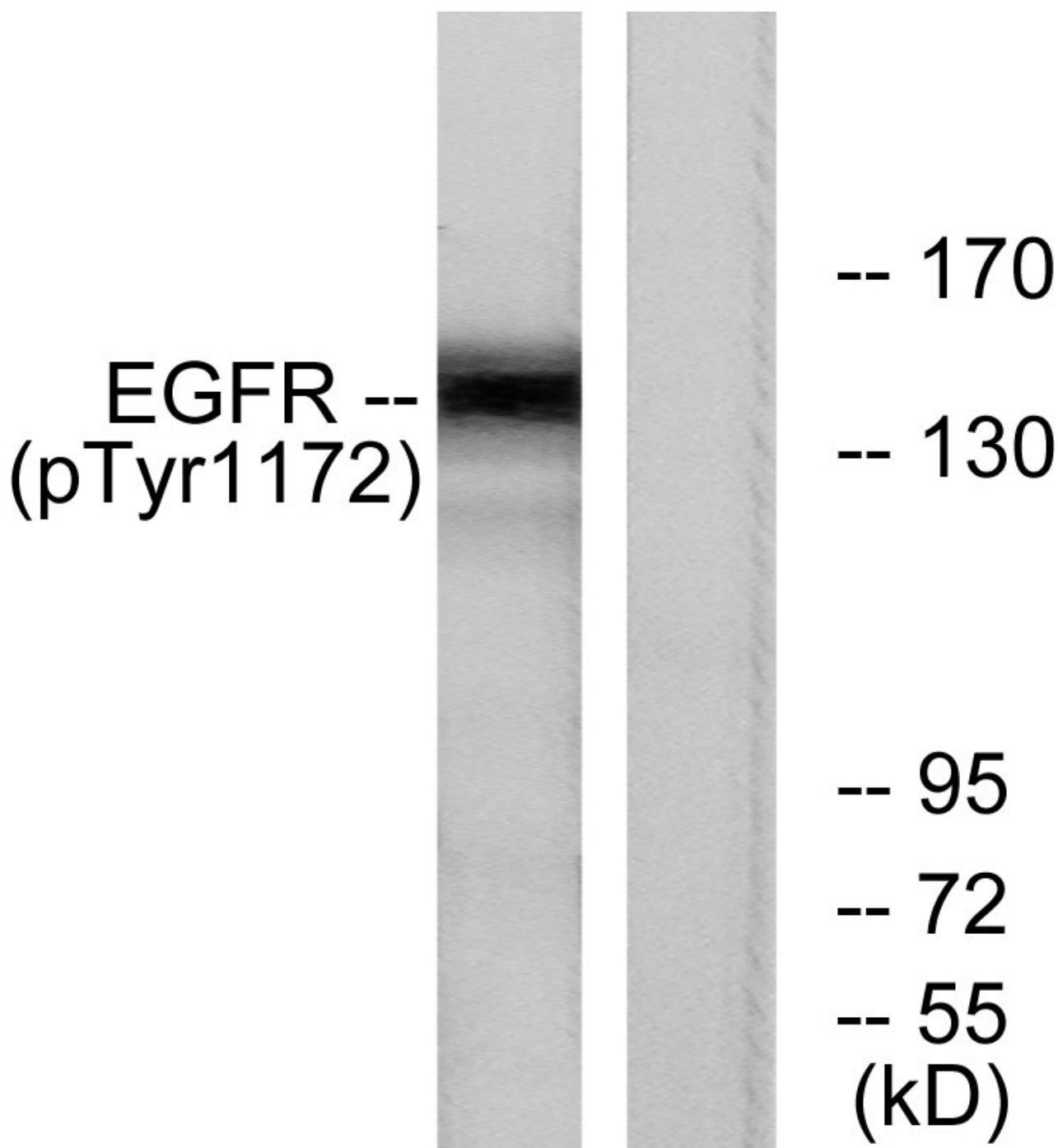
SUPPORT

SUPPORT@GENUINBIOTECH.COM
TEL: +1-540-855-7041

ORDERS

SALES@GENUINBIOTECH.COM
FAX: +1-540-855-7041

WWW.GENUINBIOTECH.COM



Western blotting analysis of lysates from A431 cells treated with EGF 40 μ M 10', using EGFR (Phospho-Tyr1172) Antibody. The lane on the right is blocked with the phospho peptide.