

Anti-Phospho-Estrogen Receptor alpha (S167) Rabbit Polyclonal Antibody



Catalog #: U1082

Aliases

ESR1; ESR; NR3A1; Estrogen receptor; ER; ER-alpha; Estradiol receptor; Nuclear receptor subfamily 3 group A member 1

Background

Gene Name: ESR1

NCBI Gene Entry: [2099](#)

UniProt Entry: [P03372](#)

Application Information

Molecular Weight: Predicted, 66 kDa; observed, 66 kDa

Clonality: Rabbit polyclonal antibody

Species Reactivity: Human, mouse, rat

Applications Tested: Western blotting (WB), immunohistochemistry (IHC), immunocytochemistry (IC)

Immunogen

A synthesized peptide derived from human Phospho-ER α (Ser167)

Isotype

Rabbit IgG

Storage Buffer

Supplied in PBS containing 50% glycerol, 0.5% BSA and 0.02% sodium azide.

Storage

Store at -20 °C for one year.

Recommended Dilutions

Western Blotting (WB): 1:500-1:2,000

Immunohistochemistry (IHC): 1:100-1:300

Immunocytochemistry (IC): 1:50-1:200

Note: This product is for research use only.

Validation Data

SUPPORT

SUPPORT@GENUINBIOTECH.COM
TEL: +1-540-855-7041

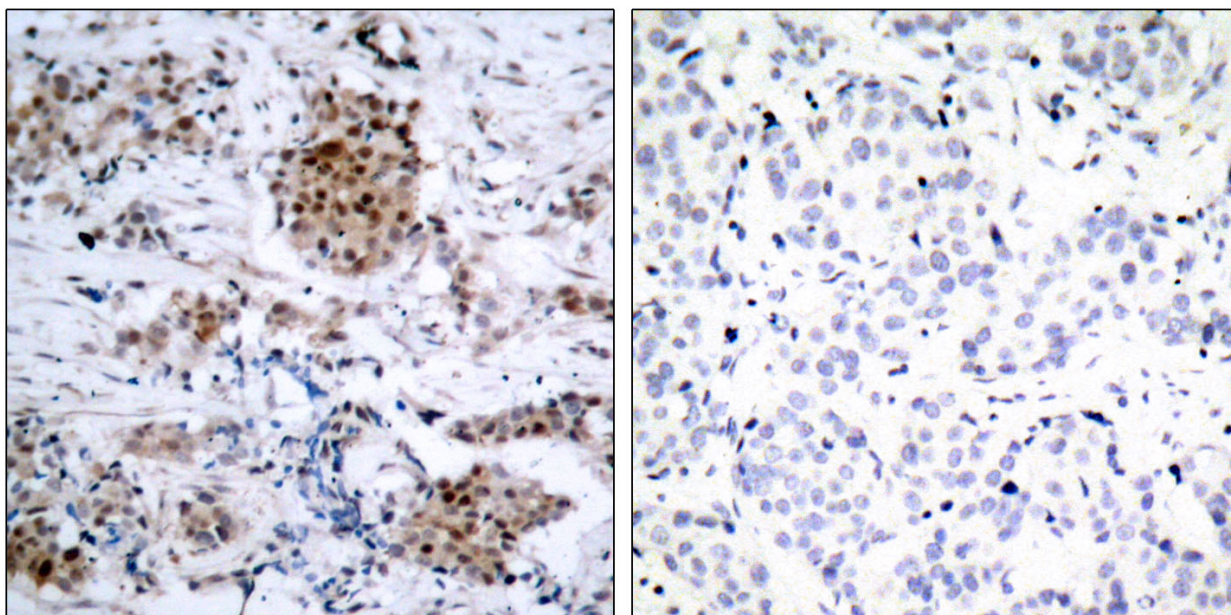
ORDERS

SALES@GENUINBIOTECH.COM
FAX: +1-540-855-7041

WWW.GENUINBIOTECH.COM

Anti-Phospho-Estrogen Receptor alpha (S167) Rabbit Polyclonal Antibody

PAGE 2



Immunohistochemistry analysis of paraffin-embedded human breast carcinoma, using Estrogen Receptor-alpha (Phospho-Ser167) Antibody. The picture on the right is blocked with the phospho peptide.

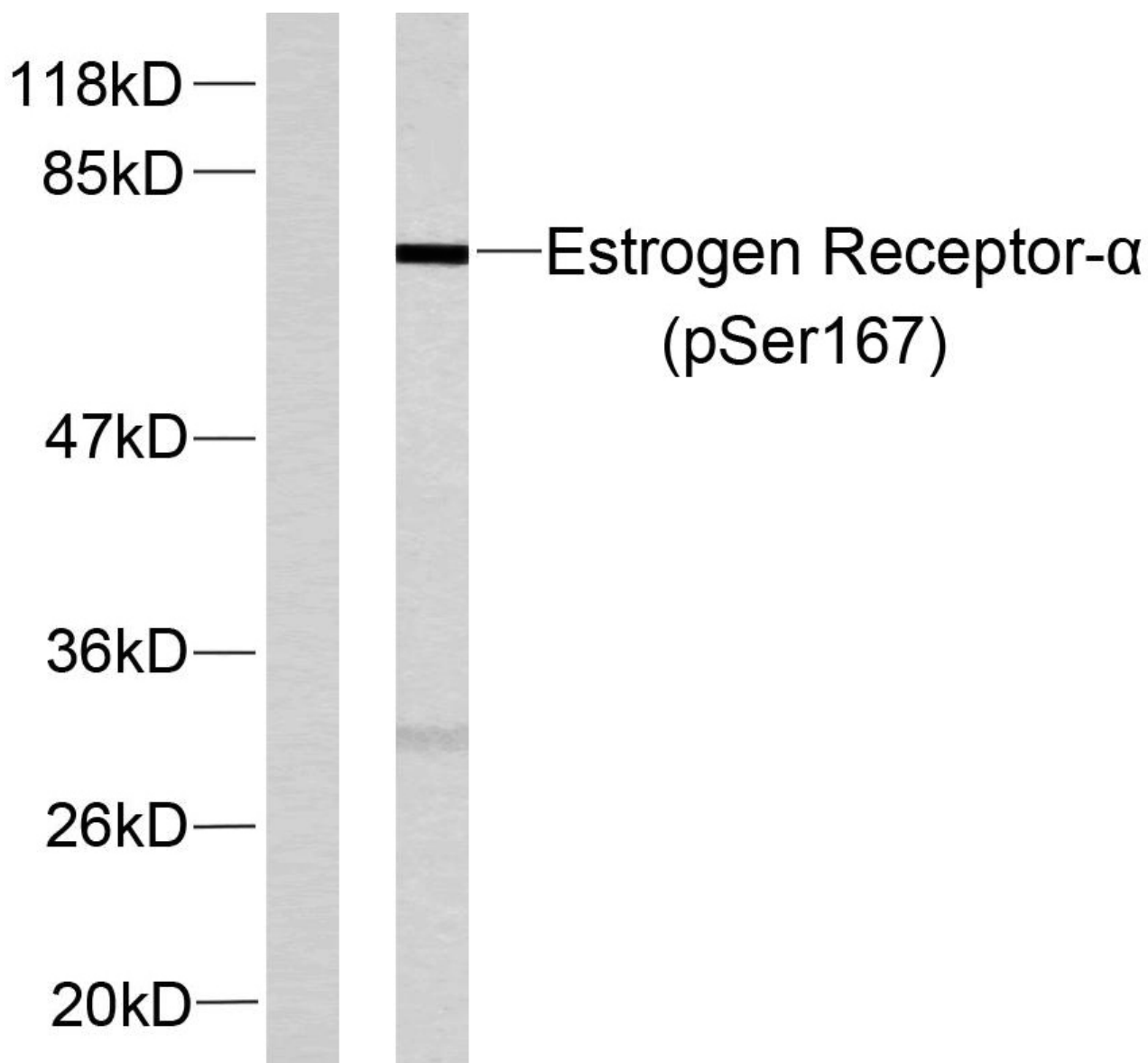
SUPPORT

SUPPORT@GENUINBIOTECH.COM
TEL: +1-540-855-7041

ORDERS

SALES@GENUINBIOTECH.COM
FAX: +1-540-855-7041

WWW.GENUINBIOTECH.COM



Western blotting analysis of lysates from MCF7 cells treated with EGF, using Estrogen Receptor-alpha (Phospho-Ser167) Antibody. The lane on the left is blocked with the phospho peptide.