

Anti-Phospho-IRS-1 (S639) Rabbit Polyclonal Antibody



Catalog #: U1089

Aliases

IRS1; Insulin receptor substrate 1; IRS-1

Background

Gene Name: IRS1

NCBI Gene Entry: [3667](#)

UniProt Entry: [P35568](#)

Application Information

Molecular Weight: Predicted, 132 kDa; observed, 170 kDa

Clonality: Rabbit polyclonal antibody

Species Reactivity: Human, mouse, rat

Applications Tested: Western blotting (WB), immunohistochemistry (IHC), immunocytochemistry (IC)

Immunogen

A synthesized peptide derived from human Phospho-IRS-1 (Ser639)

Isotype

Rabbit IgG

Storage Buffer

Supplied in PBS containing 50% glycerol, 0.5% BSA and 0.02% sodium azide.

Storage

Store at -20 °C for one year.

Recommended Dilutions

Western Blotting (WB): 1:500-1:2,000

Immunohistochemistry (IHC): 1:100-1:300

Immunocytochemistry (IC): 1:50-1:200

Note: This product is for research use only.

Validation Data

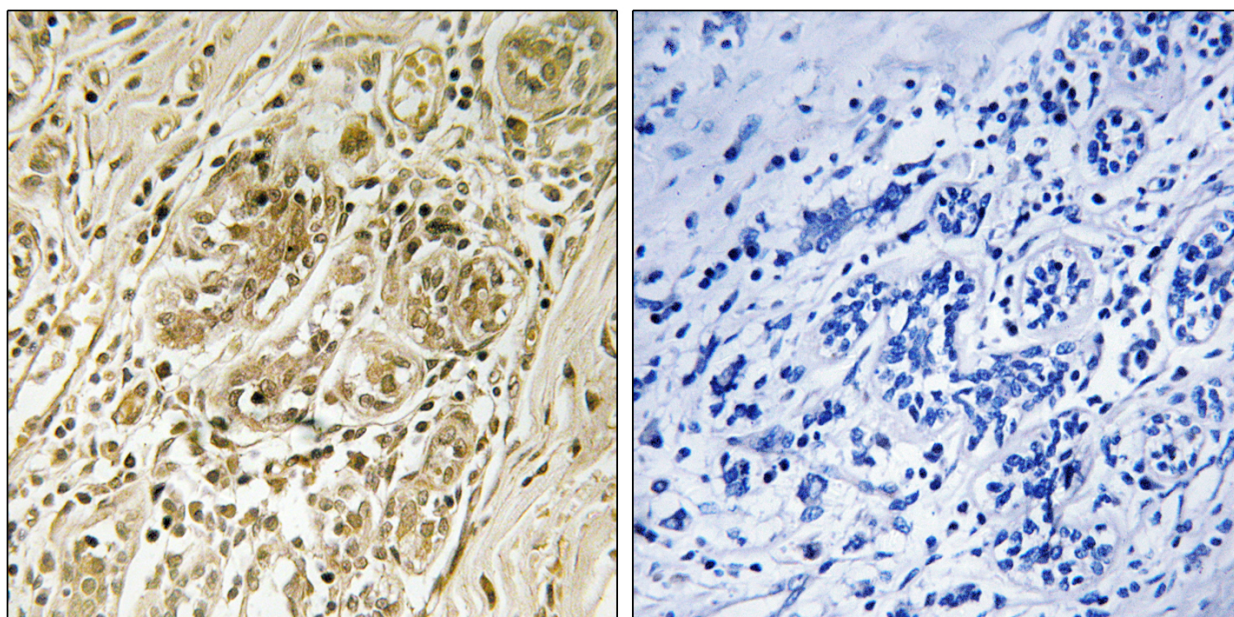
SUPPORT

SUPPORT@GENUINBIOTECH.COM
TEL: +1-540-855-7041

ORDERS

SALES@GENUINBIOTECH.COM
FAX: +1-540-855-7041

WWW.GENUINBIOTECH.COM



Immunohistochemistry analysis of paraffin-embedded human breast carcinoma, using IRS-1 (Phospho-Ser639) Antibody. The picture on the right is blocked with the phospho peptide.