

Anti-Phospho-MEK-3 (S218) Rabbit Polyclonal Antibody



Catalog #: U1093

Aliases

MAP2K3; MEK3; MKK3; PRKMK3; SKK2; Dual specificity mitogen-activated protein kinase kinase 3; MAP kinase kinase 3; MAPKK 3; MAPK/ERK kinase 3; MEK 3; Stress-activated protein kinase kinase 2; SAPK kinase 2; SAPKK-2; SAPKK2

Background

Gene Name: MAP2K3

NCBI Gene Entry: [5606](#)

UniProt Entry: [P46734](#)

Application Information

Molecular Weight: Predicted, 39 kDa; observed, 39 kDa

Clonality: Rabbit polyclonal antibody

Species Reactivity: Human, mouse, rat

Applications Tested: Western blotting (WB), immunohistochemistry (IHC), immunocytochemistry (IC)

Immunogen

A synthesized peptide derived from human Phospho-MEK-3 (Ser218)

Isotype

Rabbit IgG

Storage Buffer

Supplied in PBS containing 50% glycerol, 0.5% BSA and 0.02% sodium azide.

Storage

Store at -20 °C for one year.

Recommended Dilutions

Western Blotting (WB): 1:500-1:2,000

Immunohistochemistry (IHC): 1:100-1:300

Immunocytochemistry (IC): 1:50-1:200

Note: This product is for research use only.

SUPPORT

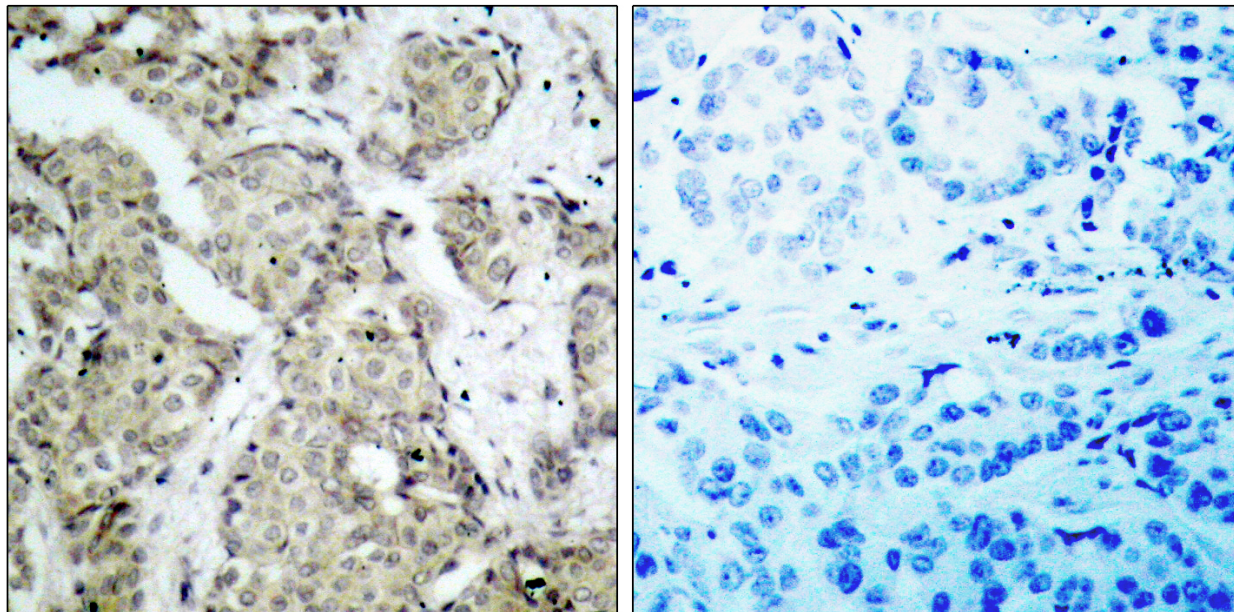
SUPPORT@GENUINBIOTECH.COM
TEL: +1-540-855-7041

ORDERS

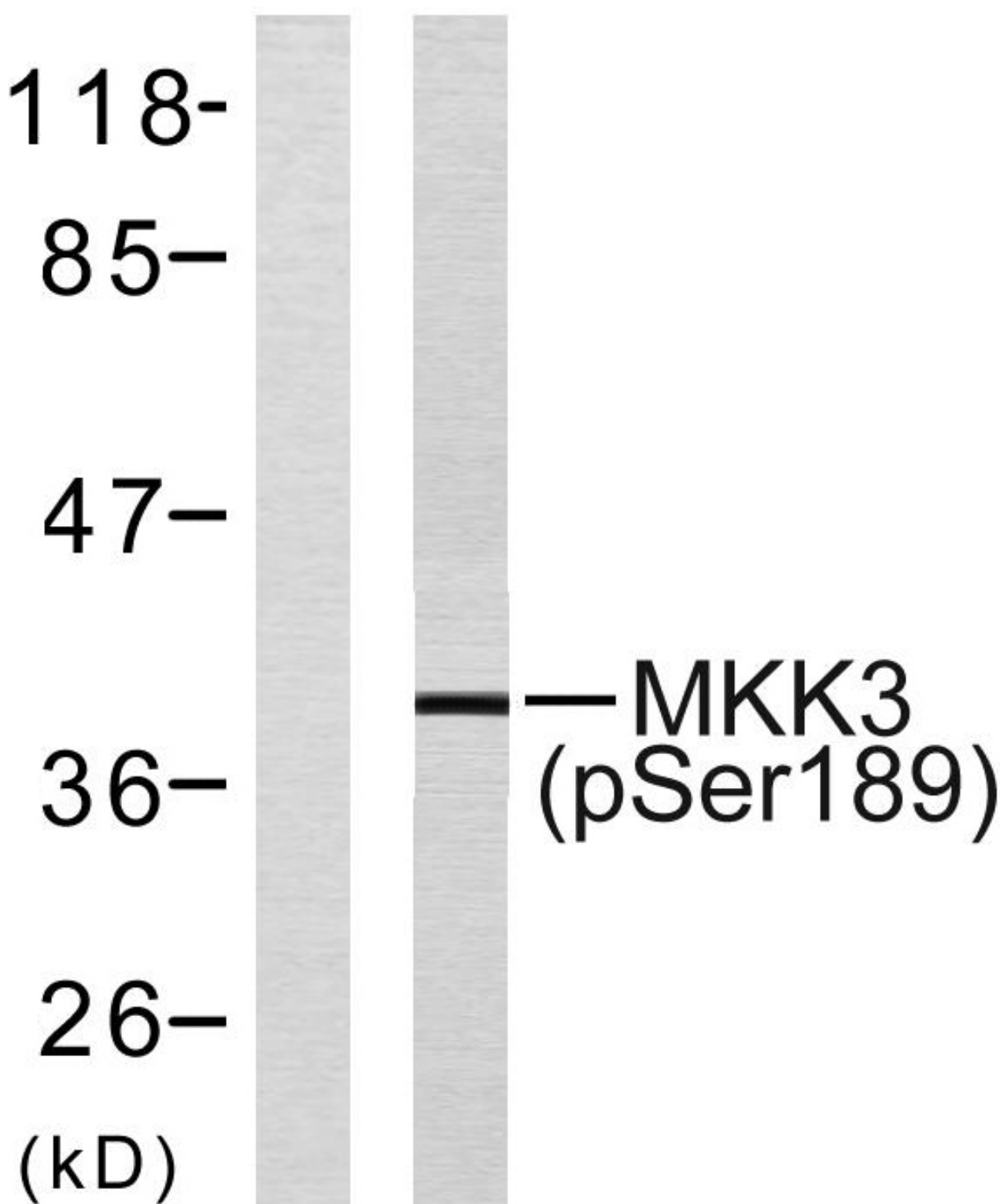
SALES@GENUINBIOTECH.COM
FAX: +1-540-855-7041

WWW.GENUINBIOTECH.COM

Validation Data



Immunohistochemistry analysis of paraffin-embedded human breast carcinoma, using MKK3 (Phospho-Ser189) Antibody. The picture on the right is blocked with the phospho peptide.



Western blotting analysis of lysates from MDA-MB-435 cells, using MKK3 (Phospho-Ser189) Antibody. The lane on the left is blocked with the phospho peptide.

SUPPORT

SUPPORT@GENUINBIOTECH.COM
TEL: +1-540-855-7041

ORDERS

SALES@GENUINBIOTECH.COM
FAX: +1-540-855-7041

WWW.GENUINBIOTECH.COM