

Anti-Phospho-p27 (S10) Rabbit Polyclonal Antibody



Catalog #: U1098

Aliases

CDKN1B; KIP1; Cyclin-dependent kinase inhibitor 1B; Cyclin-dependent kinase inhibitor p27; p27Kip1

Background

Gene Name: CDKN1B

NCBI Gene Entry: [1027](#)

UniProt Entry: [P46527](#)

Application Information

Molecular Weight: Predicted, 22 kDa; observed, 22 kDa

Clonality: Rabbit polyclonal antibody

Species Reactivity: Human, mouse, rat

Applications Tested: Western blotting (WB)

Immunogen

A synthesized peptide derived from human Phospho-p27 (Ser10)

Isotype

Rabbit IgG

Storage Buffer

Supplied in PBS containing 50% glycerol, 0.5% BSA and 0.02% sodium azide.

Storage

Store at -20 °C for one year.

Recommended Dilutions

Western Blotting (WB): 1:500-1:2,000

Note: This product is for research use only.

Validation Data

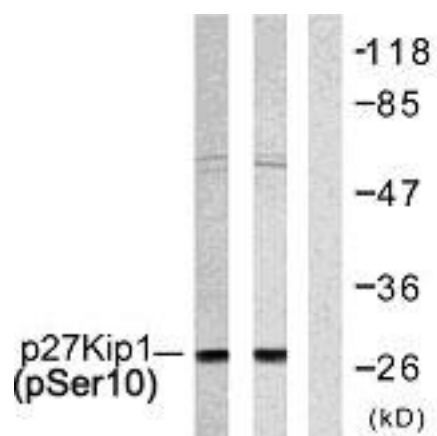
SUPPORT

SUPPORT@GENUINBIOTECH.COM
TEL: +1-540-855-7041

ORDERS

SALES@GENUINBIOTECH.COM
FAX: +1-540-855-7041

WWW.GENUINBIOTECH.COM



Western blotting analysis of lysates from A2780 and COLO205 cells, using p27 Kip1 (Phospho-Ser10) Antibody. The lane on the right is blocked with the phospho peptide.