

Anti-Phospho-Stat6 (T645) Rabbit Polyclonal Antibody



Catalog #: U1119

Aliases

STAT6; Signal transducer and activator of transcription 6; IL-4 Stat

Background

Gene Name: STAT6

NCBI Gene Entry: [6778](#)

UniProt Entry: [P42226](#)

Application Information

Molecular Weight: Predicted, 94 kDa; observed, 94 kDa

Clonality: Rabbit polyclonal antibody

Species Reactivity: Human, mouse, rat

Applications Tested: Western blotting (WB), immunohistochemistry (IHC), immunocytochemistry (IC), immunoprecipitation (IP)

Immunogen

A synthesized peptide derived from human Phospho-Stat6 (Thr645)

Isotype

Rabbit IgG

Storage Buffer

Supplied in PBS containing 50% glycerol, 0.5% BSA and 0.02% sodium azide.

Storage

Store at -20 °C for one year.

Recommended Dilutions

Western Blotting (WB): 1:500-1:2,000

Immunohistochemistry (IHC): 1:100-1:300

Immunocytochemistry (IC) 1:50-1:200

Immunoprecipitation (IP): 2-5 ug

Note: This product is for research use only.

Validation Data

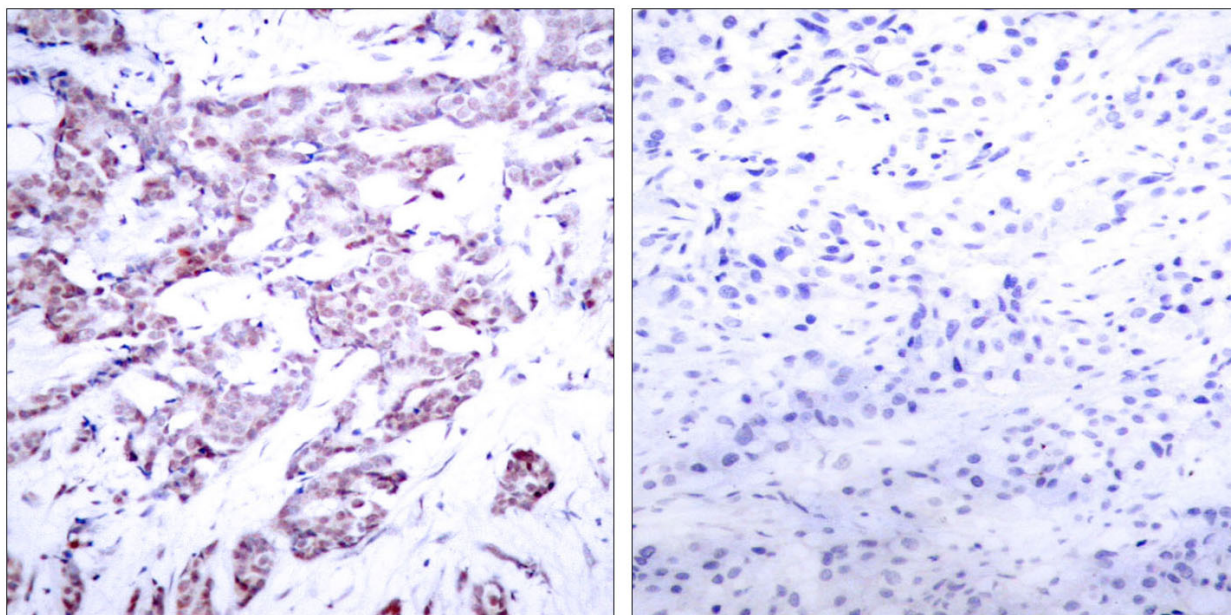
SUPPORT

SUPPORT@GENUINBIOTECH.COM
TEL: +1-540-855-7041

ORDERS

SALES@GENUINBIOTECH.COM
FAX: +1-540-855-7041

WWW.GENUINBIOTECH.COM



Immunohistochemistry analysis of paraffin-embedded human breast carcinoma, using STAT6 (Phospho-Thr645) Antibody. The picture on the right is blocked with the phospho peptide.