

Anti-Phospho-Pim-1 (Y309) Rabbit Polyclonal Antibody



Catalog #: U1172

Aliases

PIM1; Serine/threonine-protein kinase pim-1

Background

Gene Name: PIM1

NCBI Gene Entry: [5292](#)

UniProt Entry: [P11309](#)

Application Information

Molecular Weight: Predicted, 36 kDa; observed, 45 kDa

Clonality: Rabbit polyclonal antibody

Species Reactivity: Human, mouse, rat

Applications Tested: Western blotting (WB)

Immunogen

A synthesized peptide derived from human Phospho-Pim-1 (Tyr309)

Isotype

Rabbit IgG

Storage Buffer

Supplied in PBS containing 50% glycerol, 0.5% BSA and 0.02% sodium azide.

Storage

Store at -20 °C for one year.

Recommended Dilutions

Western Blotting (WB): 1:500-1:2,000

Note: This product is for research use only.

Validation Data

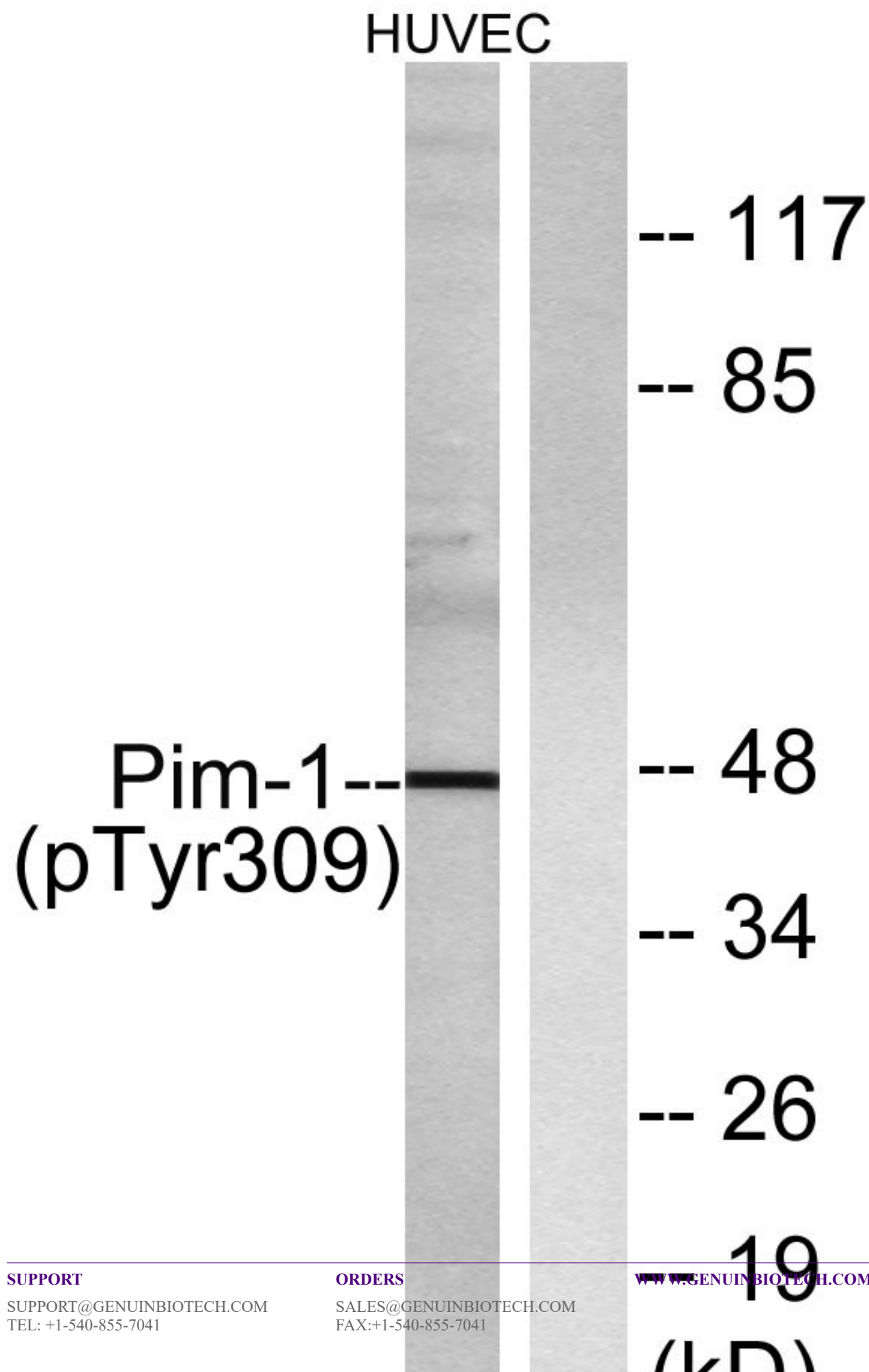
SUPPORT

SUPPORT@GENUINBIOTECH.COM
TEL: +1-540-855-7041

ORDERS

SALES@GENUINBIOTECH.COM
FAX: +1-540-855-7041

WWW.GENUINBIOTECH.COM



SUPPORT

SUPPORT@GENUINBIOTECH.COM
TEL: +1-540-855-7041

ORDERS

SALES@GENUINBIOTECH.COM
FAX: +1-540-855-7041

WWW.GENUINBIOTECH.COM

Anti-Phospho-Pim-1 (Y309) Rabbit Polyclonal Antibody

PAGE 3

Western blotting analysis of lysates from HUVEC cells treated with PMA 125ng/ml 30', using Pim-1 (Phospho-Tyr309) Antibody. The lane on the right is blocked with the phospho peptide.

SUPPORT

SUPPORT@GENUINBIOTECH.COM
TEL: +1-540-855-7041

ORDERS

SALES@GENUINBIOTECH.COM
FAX: +1-540-855-7041

WWW.GENUINBIOTECH.COM