

Anti-Phospho-CD40 (T254) Rabbit Polyclonal Antibody



Catalog #: U1216

Aliases

CD40; TNFRSF5; Tumor necrosis factor receptor superfamily member 5; B-cell surface antigen CD40; Bp50; CD40L receptor; CDw40; CD antigen CD40

Background

Gene Name: CD40

NCBI Gene Entry: [958](#)

UniProt Entry: [P25942](#)

Application Information

Molecular Weight: Predicted, 31 kDa; observed, 30 kDa

Clonality: Rabbit polyclonal antibody

Species Reactivity: Human, mouse

Applications Tested: Western blotting (WB)

Immunogen

A synthesized peptide derived from human Phospho-CD40 (Thr254)

Isotype

Rabbit IgG

Storage Buffer

Supplied in PBS containing 50% glycerol, 0.5% BSA and 0.02% sodium azide.

Storage

Store at -20 °C for one year.

Recommended Dilutions

Western Blotting (WB): 1:500-1:2,000

Note: This product is for research use only.

Validation Data

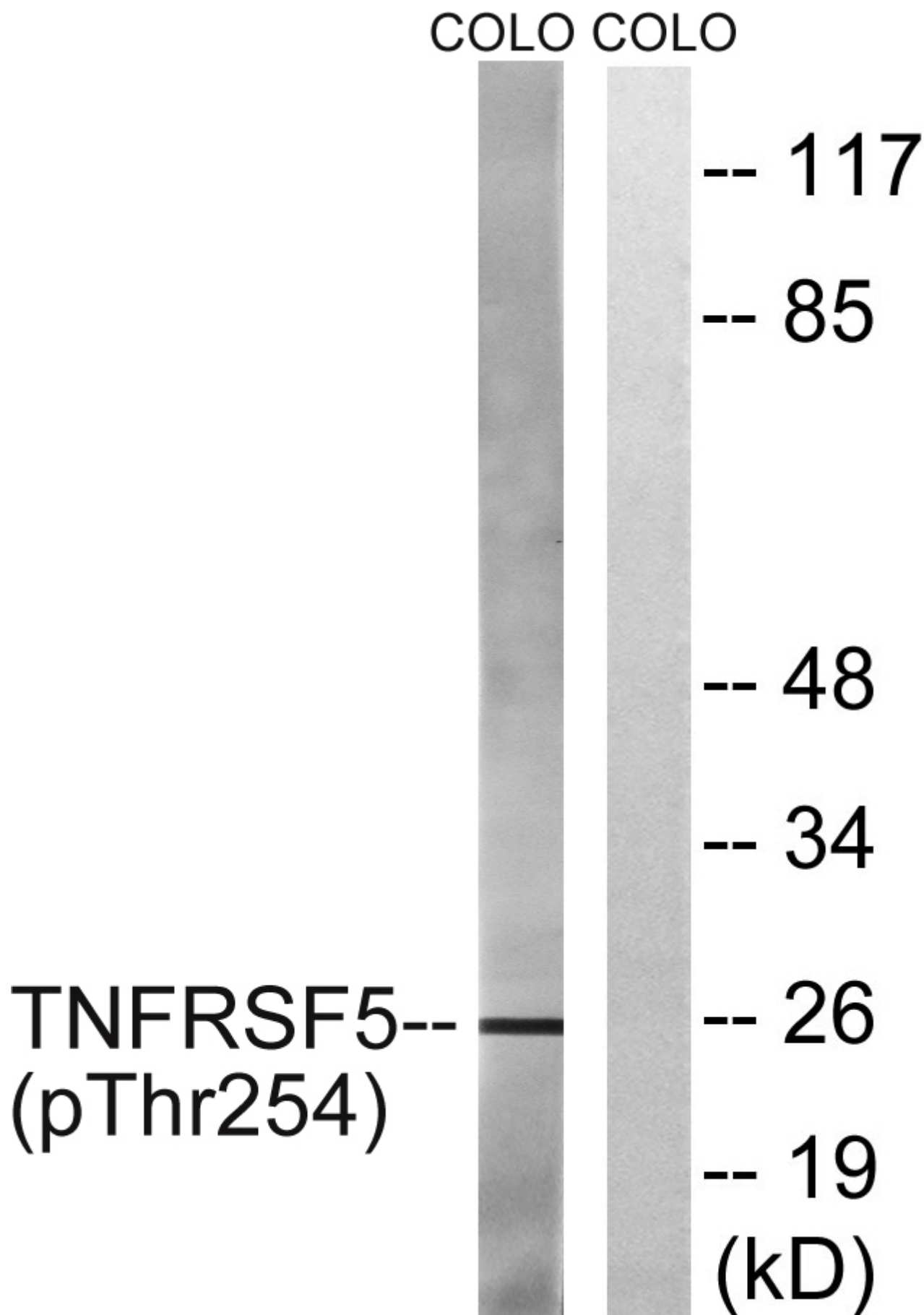
SUPPORT

SUPPORT@GENUINBIOTECH.COM
TEL: +1-540-855-7041

ORDERS

SALES@GENUINBIOTECH.COM
FAX: +1-540-855-7041

WWW.GENUINBIOTECH.COM



Anti-Phospho-CD40 (T254) Rabbit Polyclonal Antibody

PAGE 3

Western blotting analysis of lysates from COLO205 cells treated with Insulin 0.01U/ml 15', using TNFRSF5 (Phospho-Thr254) Antibody. The lane on the right is blocked with the phospho peptide.

SUPPORT

SUPPORT@GENUINBIOTECH.COM
TEL: +1-540-855-7041

ORDERS

SALES@GENUINBIOTECH.COM
FAX: +1-540-855-7041

WWW.GENUINBIOTECH.COM