

Anti-Phospho-Wee1 (S642) Rabbit Polyclonal Antibody



Catalog #: U1224

Aliases

WEE1; Wee1-like protein kinase; WEE1hu; Wee1A kinase

Background

Gene Name: WEE1

NCBI Gene Entry: [7465](#)

UniProt Entry: [P30291](#)

Application Information

Molecular Weight: Predicted, 72 kDa; observed, 100 kDa

Clonality: Rabbit polyclonal antibody

Species Reactivity: Human, mouse, rat

Applications Tested: Western blotting (WB)

Immunogen

A synthesized peptide derived from human Phospho-Wee1 (Ser642)

Isotype

Rabbit IgG

Storage Buffer

Supplied in PBS containing 50% glycerol, 0.5% BSA and 0.02% sodium azide.

Storage

Store at -20 °C for one year.

Recommended Dilutions

Western Blotting (WB): 1:500-1:2,000

Note: This product is for research use only.

Validation Data

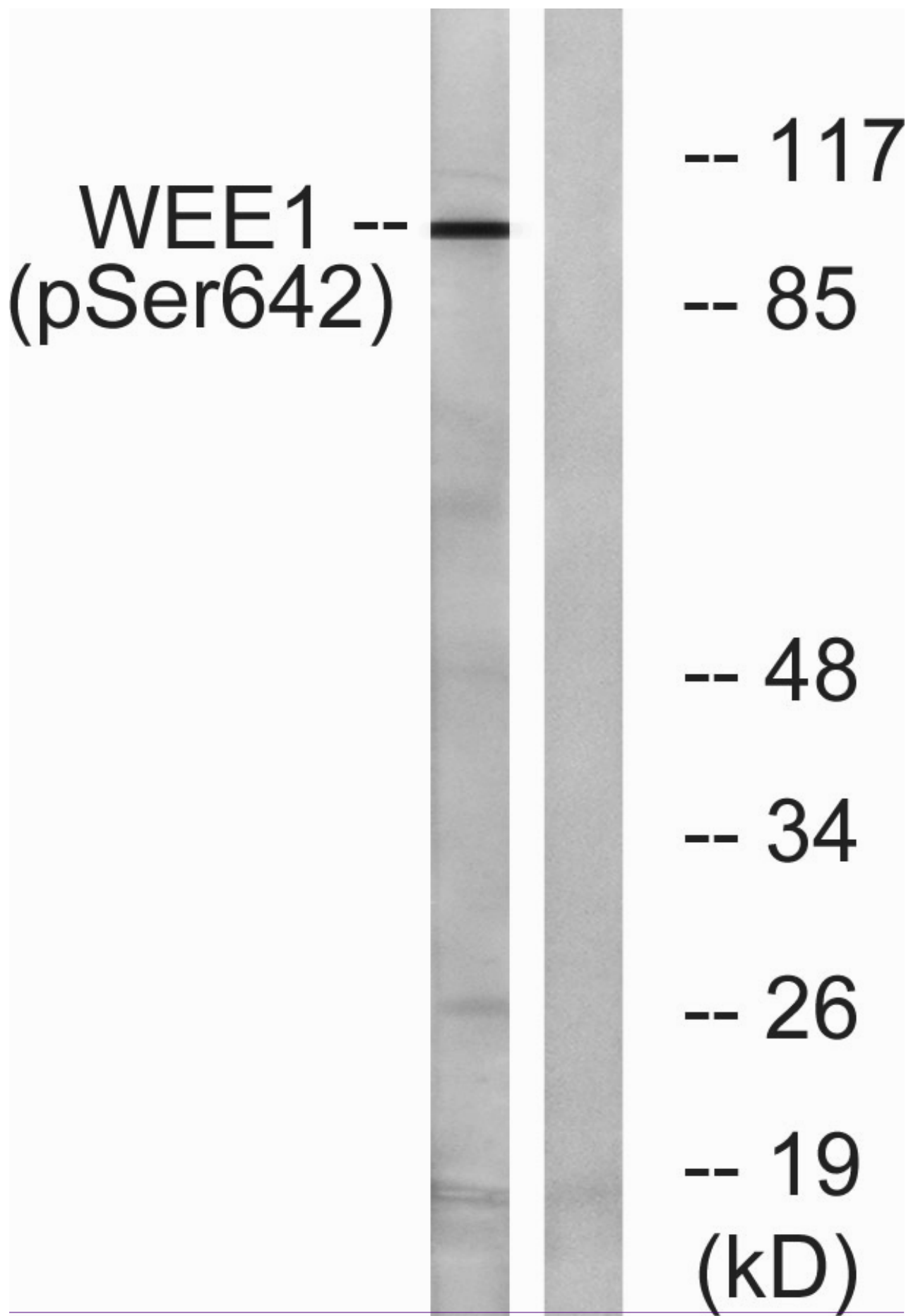
SUPPORT

SUPPORT@GENUINBIOTECH.COM
TEL: +1-540-855-7041

ORDERS

SALES@GENUINBIOTECH.COM
FAX: +1-540-855-7041

WWW.GENUINBIOTECH.COM



Anti-Phospho-Wee1 (S642) Rabbit Polyclonal Antibody

PAGE 3

Western blotting analysis of lysates from 293 cells treated with etoposide 25uM 60', using WEE1 (Phospho-Ser642) Antibody. The lane on the right is blocked with the phospho peptide.

SUPPORT

SUPPORT@GENUINBIOTECH.COM
TEL: +1-540-855-7041

ORDERS

SALES@GENUINBIOTECH.COM
FAX: +1-540-855-7041

WWW.GENUINBIOTECH.COM