

Anti-Phospho-Lfc (S886) Rabbit Polyclonal Antibody



Catalog #: U1232

Aliases

ARHGEF2; KIAA0651; LFP40; Rho guanine nucleotide exchange factor 2; Guanine nucleotide exchange factor H1; GEF-H1; Microtubule-regulated Rho-GEF; Proliferating cell nucleolar antigen p40

Background

Gene Name: ARHGEF2

NCBI Gene Entry: [9181](#)

UniProt Entry: [Q92974](#)

Application Information

Molecular Weight: Predicted, 112 kDa; observed, 111 kDa

Clonality: Rabbit polyclonal antibody

Species Reactivity: Human, mouse, rat

Applications Tested: Western blotting (WB), immunohistochemistry (IHC), immunocytochemistry (IC)

Immunogen

A synthesized peptide derived from human Phospho-Lfc (Ser886)

Isotype

Rabbit IgG

Storage Buffer

Supplied in PBS containing 50% glycerol, 0.5% BSA and 0.02% sodium azide.

Storage

Store at -20 °C for one year.

Recommended Dilutions

Western Blotting (WB): 1:500-1:2,000

Immunohistochemistry (IHC): 1:100-1:300

Immunocytochemistry (IC): 1:50-1:200

Note: This product is for research use only.

SUPPORT

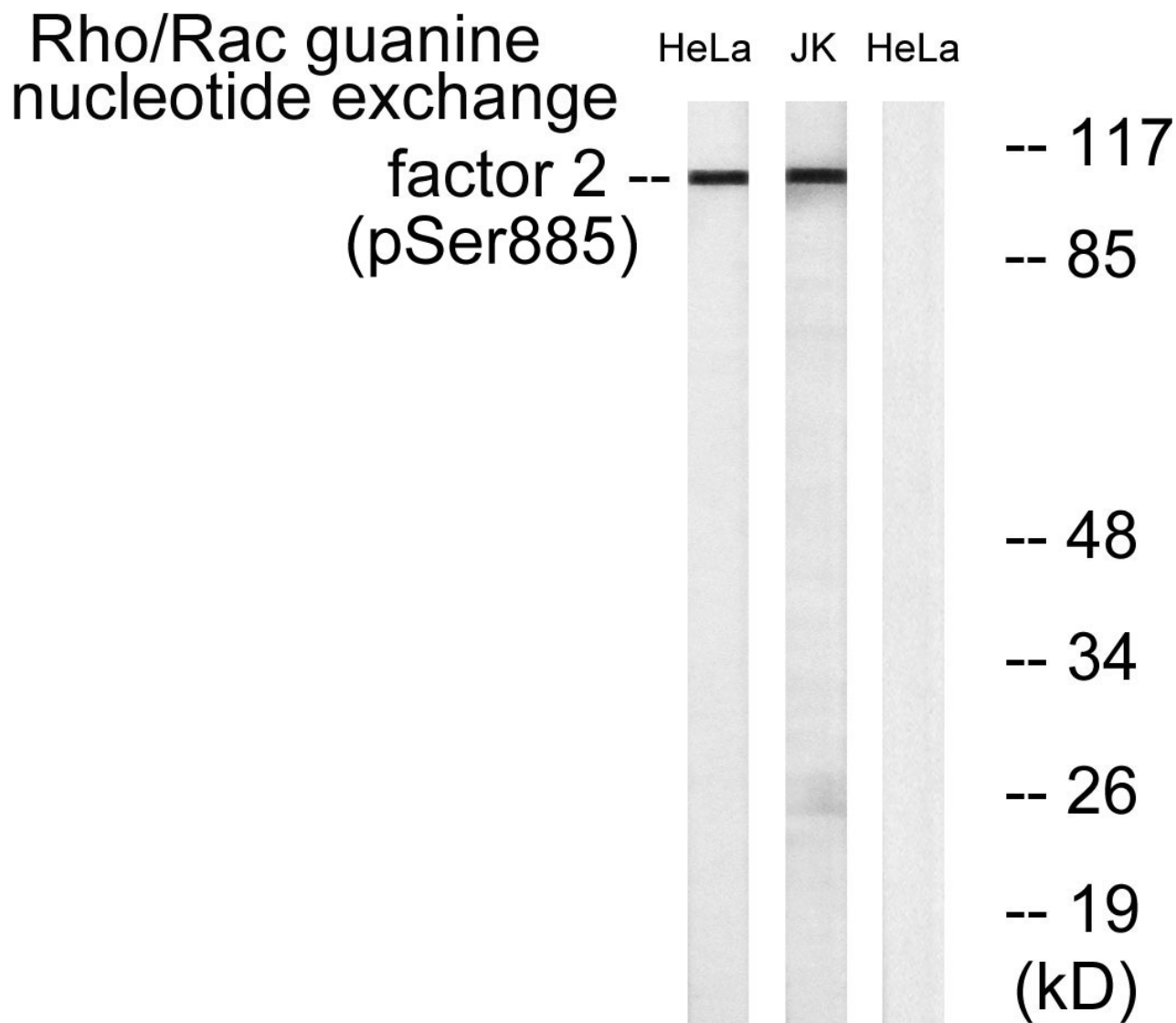
SUPPORT@GENUINBIOTECH.COM
TEL: +1-540-855-7041

ORDERS

SALES@GENUINBIOTECH.COM
FAX: +1-540-855-7041

WWW.GENUINBIOTECH.COM

Validation Data



Western blotting analysis of lysates from HeLa cells treated with TSA 400nM 24H and Jurkat cells treated with forskolin 40nM 30', using Rho/Rac Guanine Nucleotide Exchange Factor 2 (Phospho-Ser885) Antibody. The lane on the right is blocked with the phospho peptide.