

Anti-Phospho-14-3-3 beta/zeta (S184/186) Rabbit Polyclonal Antibody



Catalog #: U1236

Aliases

YWHAZ; 14-3-3 protein zeta/delta; Protein kinase C inhibitor protein 1; KCIP-1; YWHAB; 14-3-3 protein beta/alpha; Protein 1054; Protein kinase C inhibitor protein 1; KCIP-1

Background

Gene Name: YWHAB/YWHAZ

NCBI Gene Entry: [7534/7529](#)

UniProt Entry: [P63104/P31946](#)

Application Information

Molecular Weight: Predicted, 28 kDa; observed, 28 kDa

Clonality: Rabbit polyclonal antibody

Species Reactivity: Human, mouse, rat

Applications Tested: Western blotting (WB)

Immunogen

A synthesized peptide derived from human Phospho-14-3-3 β/ζ (Ser184/186)

Isotype

Rabbit IgG

Storage Buffer

Supplied in PBS containing 50% glycerol, 0.5% BSA and 0.02% sodium azide.

Storage

Store at -20 °C for one year.

Recommended Dilutions

Western Blotting (WB): 1:500-1:2,000

Note: This product is for research use only.

Validation Data

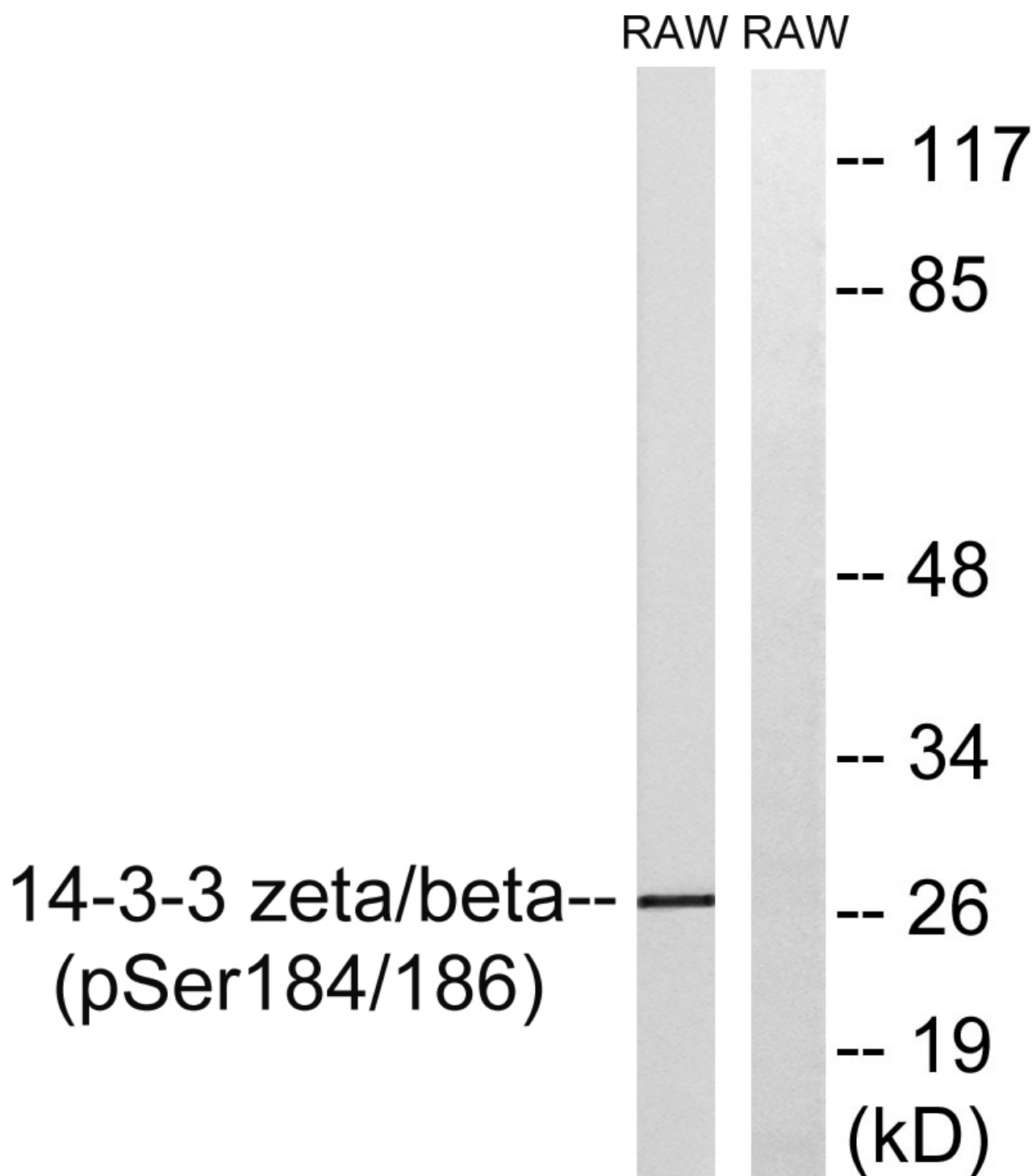
SUPPORT

SUPPORT@GENUINBIOTECH.COM
TEL: +1-540-855-7041

ORDERS

SALES@GENUINBIOTECH.COM
FAX: +1-540-855-7041

WWW.GENUINBIOTECH.COM



Western blotting analysis of lysates from RAW264.7 cells treated with UV 15', using 14-3-3 beta/zeta (Phospho-Ser184/186) Antibody. The lane on the right is blocked with the phospho peptide.