

Anti-Phospho-MEK-7 (T275) Rabbit Polyclonal Antibody



Catalog #: U1254

Aliases

MAP2K7; JNKK2; MEK7; MKK7; PRKMK7; SKK4; Dual specificity mitogen-activated protein kinase kinase 7; MAP kinase kinase 7; MAPKK 7; JNK-activating kinase 2; MAPK/ERK kinase 7; MEK 7; Stress-activated protein kinase kinase 4; SAPK kinase 4; S

Background

Gene Name: MAP2K7

NCBI Gene Entry: [5609](#)

UniProt Entry: [O14733](#)

Application Information

Molecular Weight: Predicted, 47 kDa; observed, 43 kDa

Clonality: Rabbit polyclonal antibody

Species Reactivity: Human, mouse, rat

Applications Tested: Western blotting (WB), immunohistochemistry (IHC), immunocytochemistry (IC)

Immunogen

A synthesized peptide derived from human Phospho-MEK-7 (Thr275)

Isotype

Rabbit IgG

Storage Buffer

Supplied in PBS containing 50% glycerol, 0.5% BSA and 0.02% sodium azide.

Storage

Store at -20 °C for one year.

Recommended Dilutions

Western Blotting (WB): 1:500-1:2,000

Immunohistochemistry (IHC): 1:100-1:300

Immunocytochemistry (IC): 1:50-1:200

Note: This product is for research use only.

SUPPORT

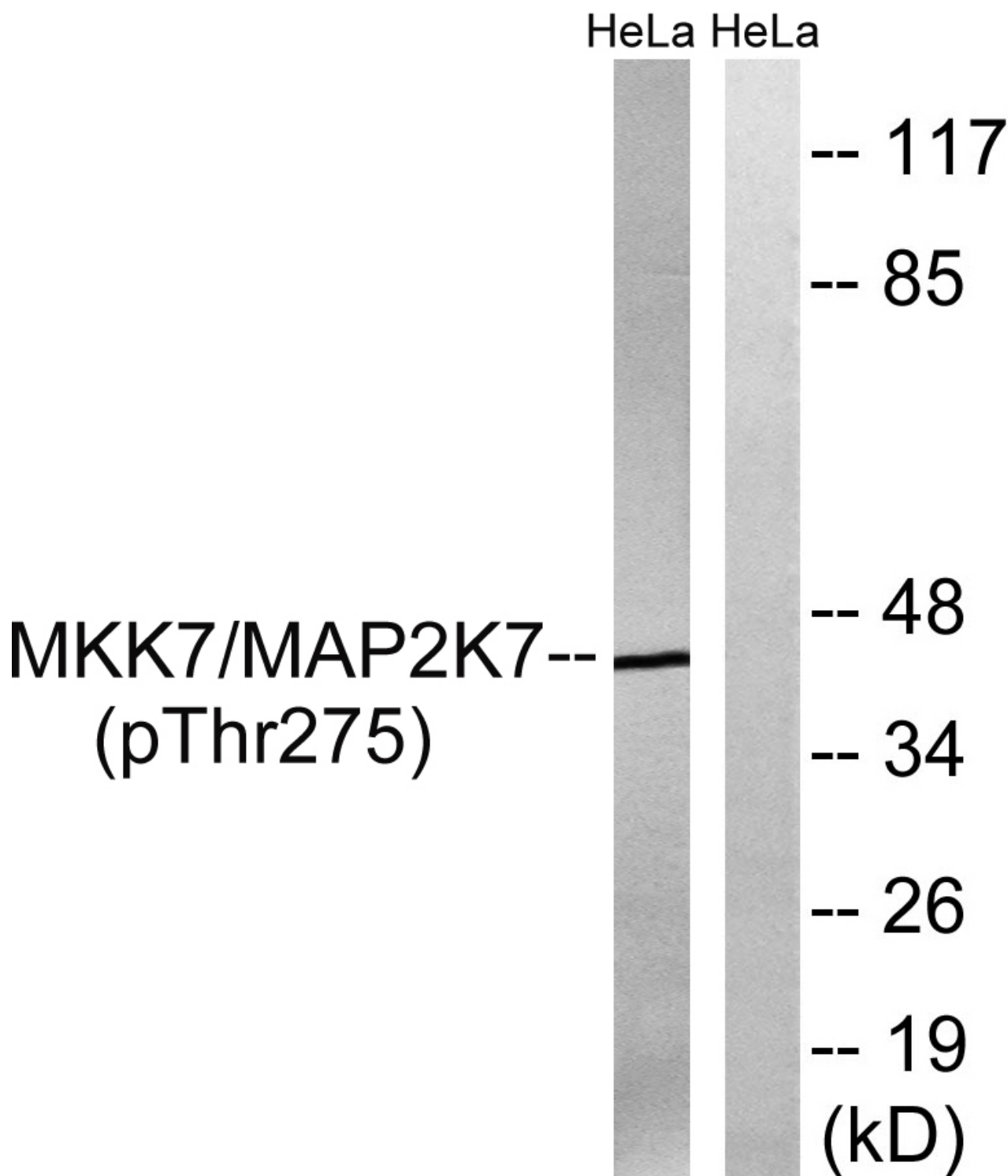
SUPPORT@GENUINBIOTECH.COM
TEL: +1-540-855-7041

ORDERS

SALES@GENUINBIOTECH.COM
FAX: +1-540-855-7041

WWW.GENUINBIOTECH.COM

Validation Data



Western blotting analysis of lysates from HeLa cells treated with calyculinA 50ng/ml 30', using MAP2K7 (Phospho-Thr275) Antibody. The lane on the right is blocked with the phospho peptide.