

# Anti-Phospho-Plk1 (S137) Rabbit Polyclonal Antibody



**Catalog #: U1260**

## Aliases

PLK1; PLK; Serine/threonine-protein kinase PLK1; Polo-like kinase 1; PLK-1; Serine/threonine-protein kinase 13; STPK13

## Background

Gene Name: PLK1

NCBI Gene Entry: [5347](#)

UniProt Entry: [P53350](#)

## Application Information

Molecular Weight: Predicted, 68 kDa; observed, 68 kDa

Clonality: Rabbit polyclonal antibody

Species Reactivity: Human, mouse, rat

Applications Tested: Western blotting (WB), immunocytochemistry (IC), immunohistochemistry (IHC)

## Immunogen

A synthesized peptide derived from human Phospho-Plk1 (Ser137)

## Isotype

Rabbit IgG

## Storage Buffer

Supplied in PBS containing 50% glycerol, 0.5% BSA and 0.02% sodium azide.

## Storage

Store at -20 °C for one year.

## Recommended Dilutions

Western Blotting (WB): 1:500-1:2,000

Immunocytochemistry (IC): 1:50-1:200

Immunohistochemistry (IHC): 1:50-1:200

**Note:** This product is for research use only.

## Validation Data

---

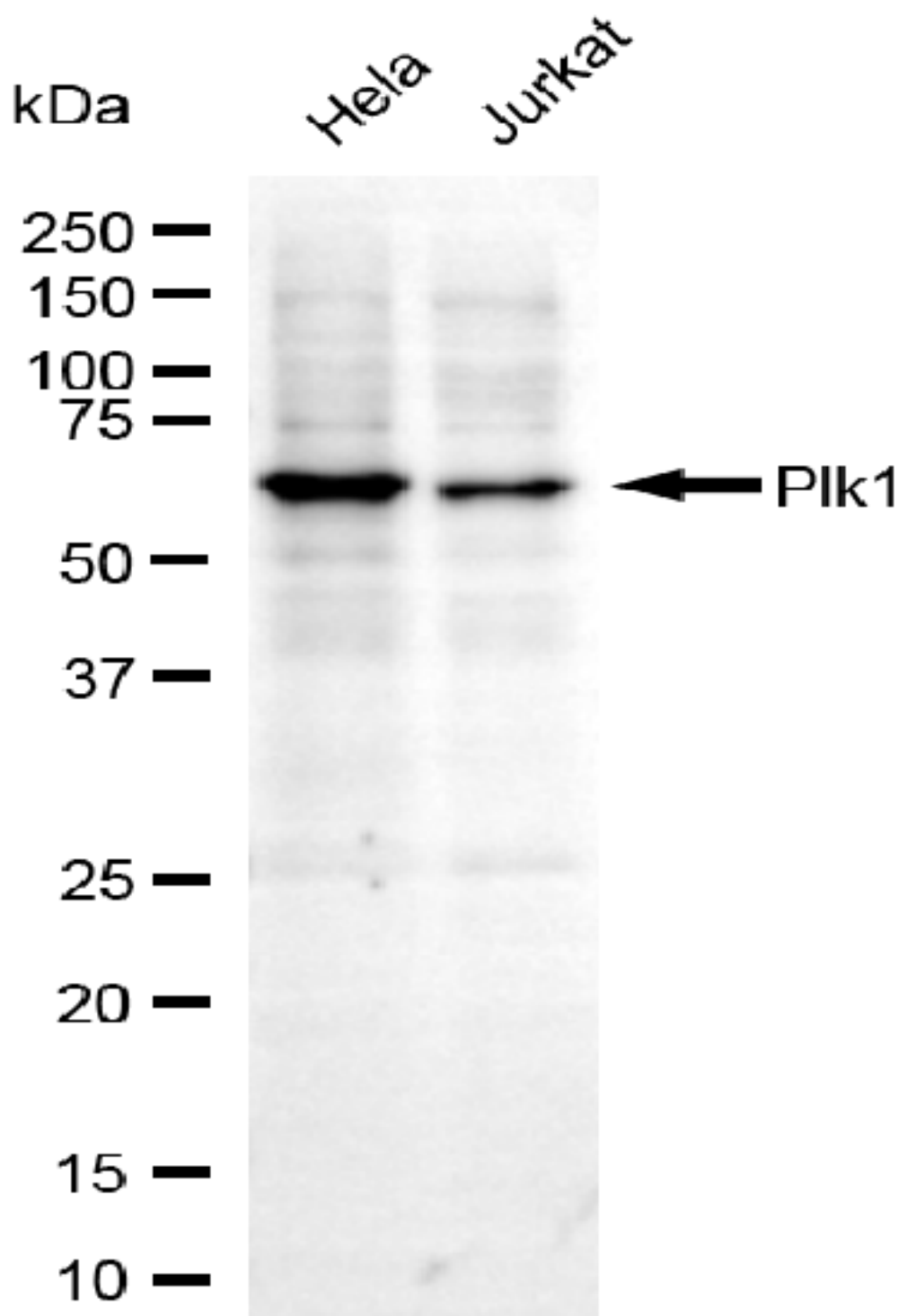
### SUPPORT

SUPPORT@GENUINBIOTECH.COM  
TEL: +1-540-855-7041

### ORDERS

SALES@GENUINBIOTECH.COM  
FAX: +1-540-855-7041

[WWW.GENUINBIOTECH.COM](http://WWW.GENUINBIOTECH.COM)



Copyright ©2025 Genuin Biotechnologies LLC

Western blotting analysis using anti-Phospho-Plk1 (Ser137) antibody (Cat#U1260). Total lysates (30 µg) were loaded and separated by SDS-PAGE. The blot was incubated with anti-Phospho-Plk1 (Ser137) antibody (Cat#U1260, 1:2,500) and HRP-conjugated goat anti-rabbit secondary antibody (Cat#201, 1:20,000) respectively. Image was developed using FeQ™ ECL Substrate Kit (Cat#226).

**SUPPORT**

SUPPORT@GENUINBIOTECH.COM  
TEL: +1-540-855-7041

**ORDERS**

SALES@GENUINBIOTECH.COM  
FAX: +1-540-855-7041

**WWW.GENUINBIOTECH.COM**