

Anti-Phospho-c-SRC (Y216) Rabbit Polyclonal Antibody



Catalog #: U1276

Aliases

SRC; SRC1; Proto-oncogene tyrosine-protein kinase Src; Proto-oncogene c-Src; pp60c-src; p60-Src

Background

Gene Name: SRC

NCBI Gene Entry: [6714](#)

UniProt Entry: [P12931](#)

Application Information

Molecular Weight: Predicted, 60 kDa; observed, 50 kDa

Clonality: Rabbit polyclonal antibody

Species Reactivity: Human, mouse, rat

Applications Tested: Western blotting (WB), immunohistochemistry (IHC), immunocytochemistry (IC)

Immunogen

A synthesized peptide derived from human Phospho-c-Src (Tyr216)

Isotype

Rabbit IgG

Storage Buffer

Supplied in PBS containing 50% glycerol, 0.5% BSA and 0.02% sodium azide.

Storage

Store at -20 °C for one year.

Recommended Dilutions

Western Blotting (WB): 1:500-1:2,000

Immunohistochemistry (IHC): 1:100-1:300

Immunocytochemistry (IC): 1:50-1:200

Note: This product is for research use only.

Validation Data

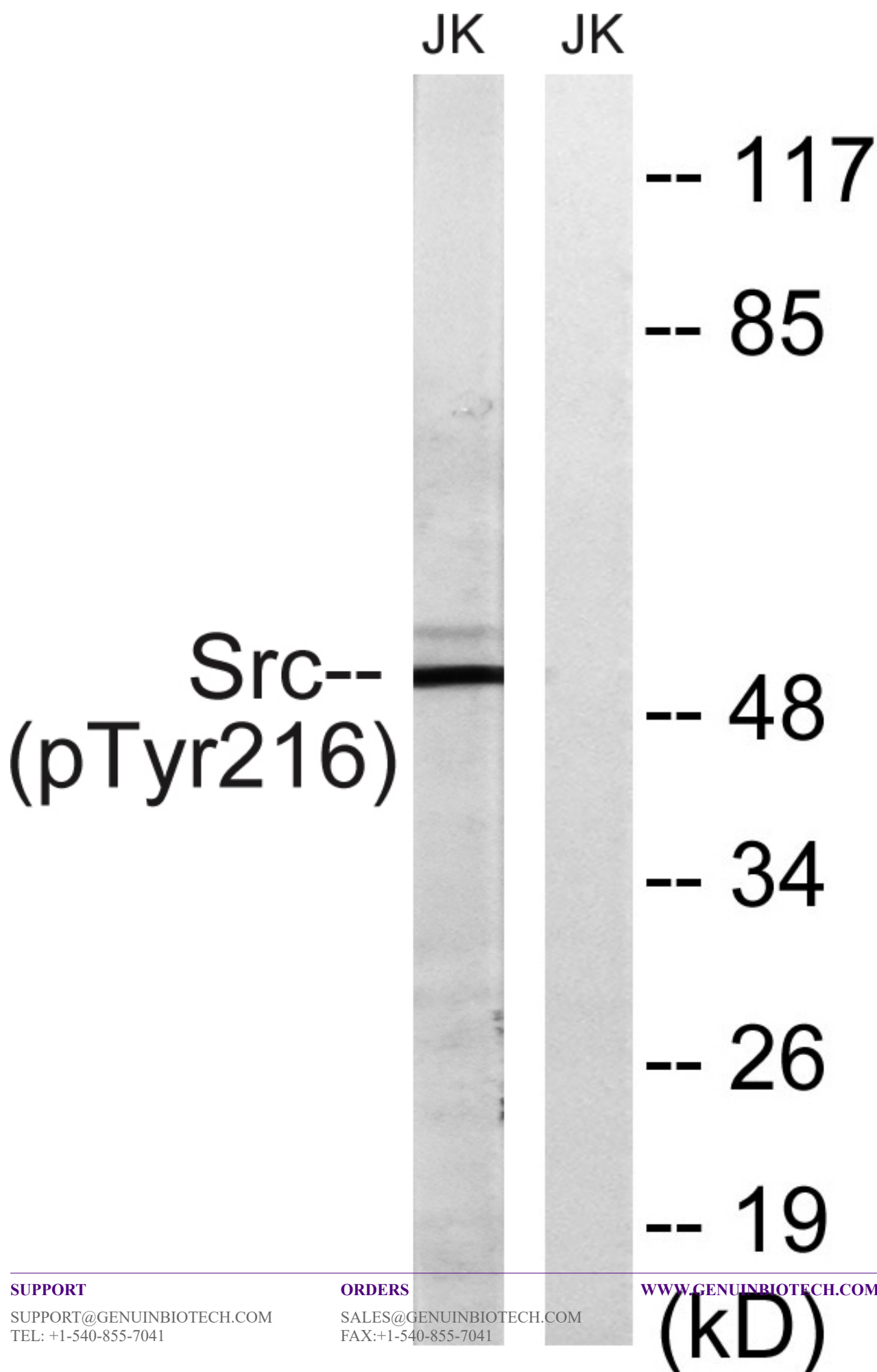
SUPPORT

SUPPORT@GENUINBIOTECH.COM
TEL: +1-540-855-7041

ORDERS

SALES@GENUINBIOTECH.COM
FAX: +1-540-855-7041

WWW.GENUINBIOTECH.COM



SUPPORT

SUPPORT@GENUINBIOTECH.COM
TEL: +1-540-855-7041

ORDERS

SALES@GENUINBIOTECH.COM
FAX: +1-540-855-7041

WWW.GENUINBIOTECH.COM

Anti-Phospho-c-SRC (Y216) Rabbit Polyclonal Antibody

PAGE 3

Western blotting analysis of lysates from Jurkat cells treated with EGF 200ng/ml 5', using Src (Phospho-Tyr216) Antibody. The lane on the right is blocked with the phospho peptide.

SUPPORT

SUPPORT@GENUINBIOTECH.COM
TEL: +1-540-855-7041

ORDERS

SALES@GENUINBIOTECH.COM
FAX: +1-540-855-7041

WWW.GENUINBIOTECH.COM