

# Anti-Phospho-PAK5/6 (S602/S560) Rabbit Polyclonal Antibody



**Catalog #: U1300**

## Aliases

PAK7; KIAA1264; PAK5; Serine/threonine-protein kinase PAK 7; p21-activated kinase 5; PAK-5; p21-activated kinase 7; PAK-7; PAK6; PAK5; Serine/threonine-protein kinase PAK 6; PAK-5; p21-activated kinase 6; PAK-6

## Background

Gene Name: PAK6/PAK7

NCBI Gene Entry: [57144/56924](#)

UniProt Entry: [Q9P286/Q9NQU5](#)

## Application Information

Molecular Weight: Predicted, 81 kDa; observed, 75 kDa

Clonality: Rabbit polyclonal antibody

Species Reactivity: Human, mouse

Applications Tested: Western blotting (WB)

## Immunogen

A synthesized peptide derived from human Phospho-PAK5/6 (Ser602/S560)

## Isotype

Rabbit IgG

## Storage Buffer

Supplied in PBS containing 50% glycerol, 0.5% BSA and 0.02% sodium azide.

## Storage

Store at -20 °C for one year.

## Recommended Dilutions

Western Blotting (WB): 1:500-1:2,000

**Note:** This product is for research use only.

## Validation Data

---

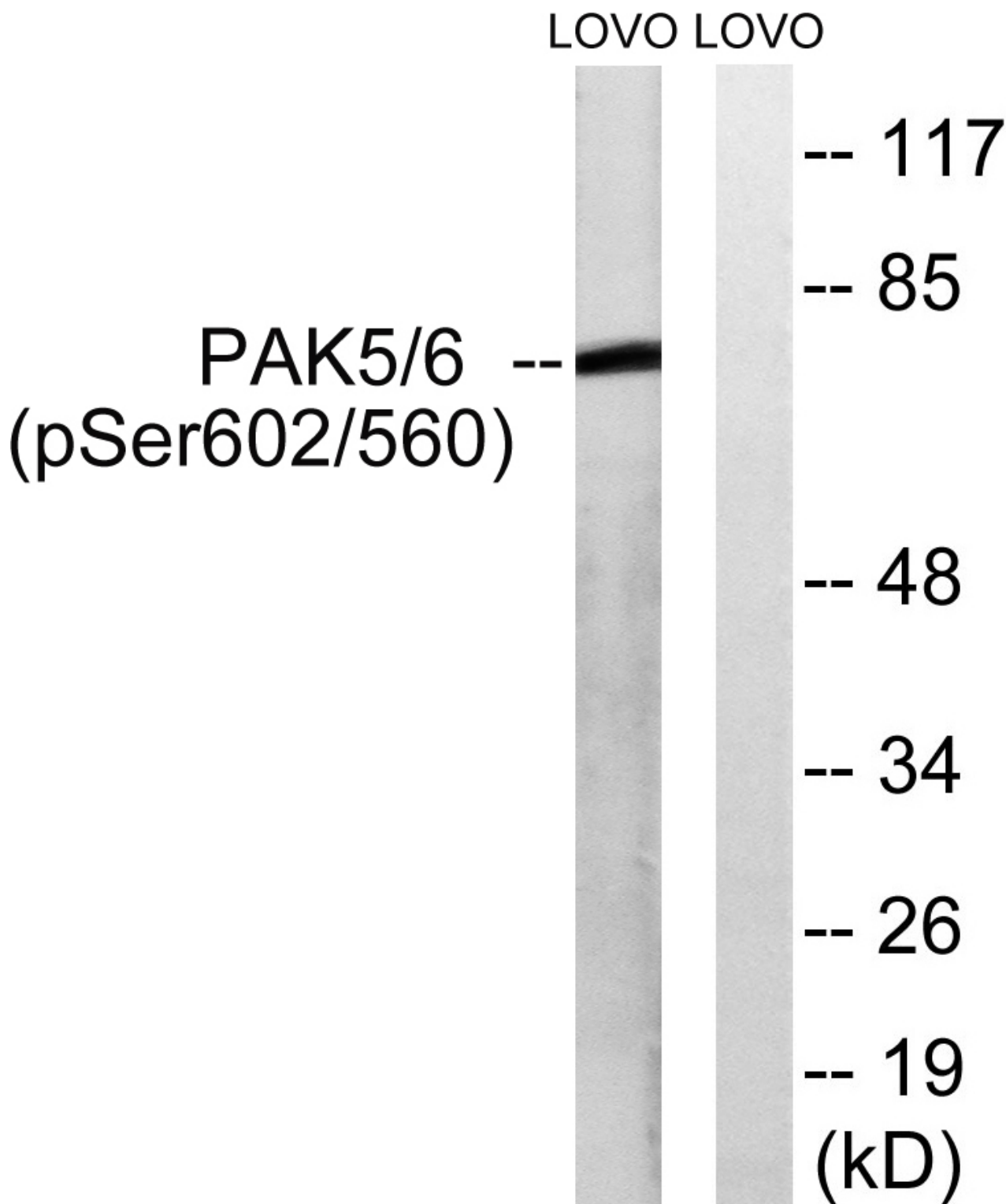
### SUPPORT

SUPPORT@GENUINBIOTECH.COM  
TEL: +1-540-855-7041

### ORDERS

SALES@GENUINBIOTECH.COM  
FAX: +1-540-855-7041

[WWW.GENUINBIOTECH.COM](http://WWW.GENUINBIOTECH.COM)



Western blotting analysis of lysates from LOVO cells treated with PMA 125ng/ml 30', using PAK5/6 (Phospho-Ser602/Ser560) Antibody. The lane on the right is blocked with the phospho peptide.