

Anti-Phospho-TR β 1 (S142) Rabbit Polyclonal Antibody



Catalog #: U1304

Aliases

THRB; ERBA2; NR1A2; THR1; Thyroid hormone receptor beta; Nuclear receptor subfamily 1 group A member 2; c-erbA-2; c-erbA-beta

Background

Gene Name: THRB

NCBI Gene Entry: [7068](#)

UniProt Entry: [P10828](#)

Application Information

Molecular Weight: Predicted, 53 kDa; observed, 45 kDa

Clonality: Rabbit polyclonal antibody

Species Reactivity: Human, mouse, rat

Applications Tested: Western blotting (WB)

Immunogen

A synthesized peptide derived from human Phospho-TR β 1 (Ser142)

Isotype

Rabbit IgG

Storage Buffer

Supplied in PBS containing 50% glycerol, 0.5% BSA and 0.02% sodium azide.

Storage

Store at -20 °C for one year.

Recommended Dilutions

Western Blotting (WB): 1:500-1:2,000

Note: This product is for research use only.

Validation Data

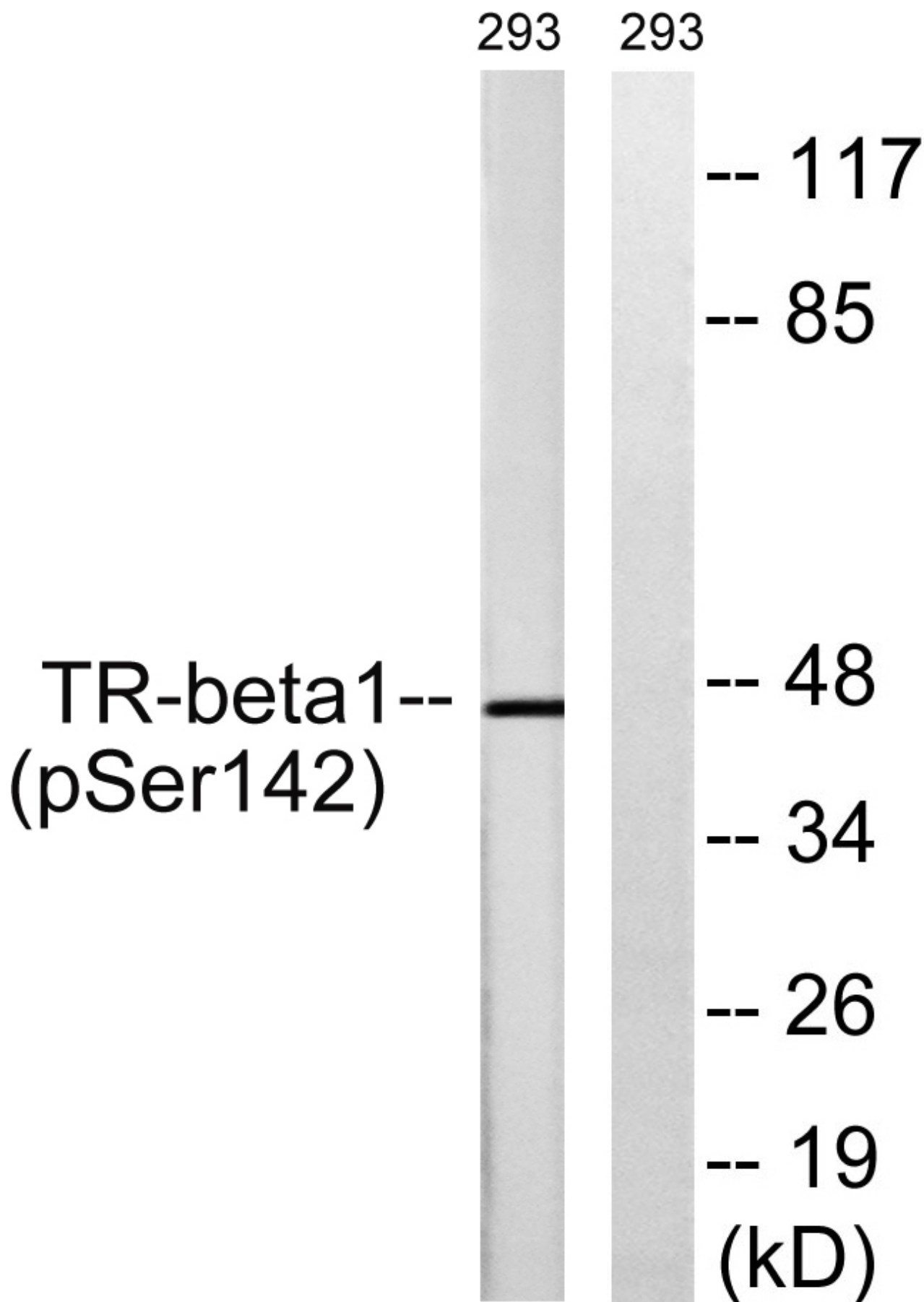
SUPPORT

SUPPORT@GENUINBIOTECH.COM
TEL: +1-540-855-7041

ORDERS

SALES@GENUINBIOTECH.COM
FAX: +1-540-855-7041

WWW.GENUINBIOTECH.COM



Anti-Phospho-TR β 1 (S142) Rabbit Polyclonal Antibody

PAGE 3

Western blotting analysis of lysates from 293 cells treated with PMA 125ng/ml 30', using TR-beta1 (Phospho-Ser142) Antibody. The lane on the right is blocked with the phospho peptide.

SUPPORT

SUPPORT@GENUINBIOTECH.COM
TEL: +1-540-855-7041

ORDERS

SALES@GENUINBIOTECH.COM
FAX: +1-540-855-7041

WWW.GENUINBIOTECH.COM