

Anti-Phospho-Dab1 (Y232) Rabbit Polyclonal Antibody



Catalog #: U1339

Aliases

DAB1; Disabled homolog 1

Background

Gene Name: DAB1

NCBI Gene Entry: [8674](#)

UniProt Entry: [O75553](#)

Application Information

Molecular Weight: Predicted, 64 kDa; observed, 80 kDa

Clonality: Rabbit polyclonal antibody

Species Reactivity: Human, mouse, rat

Applications Tested: Western blotting (WB), immunocytochemistry (IC)

Immunogen

A synthesized peptide derived from human Phospho-Dab1 (Tyr232)

Isotype

Rabbit IgG

Storage Buffer

Supplied in PBS containing 50% glycerol, 0.5% BSA and 0.02% sodium azide.

Storage

Store at -20 °C for one year.

Recommended Dilutions

Western Blotting (WB): 1:500-1:2,000

Immunocytochemistry (IC): 1:200-1:1,000

Note: This product is for research use only.

Validation Data

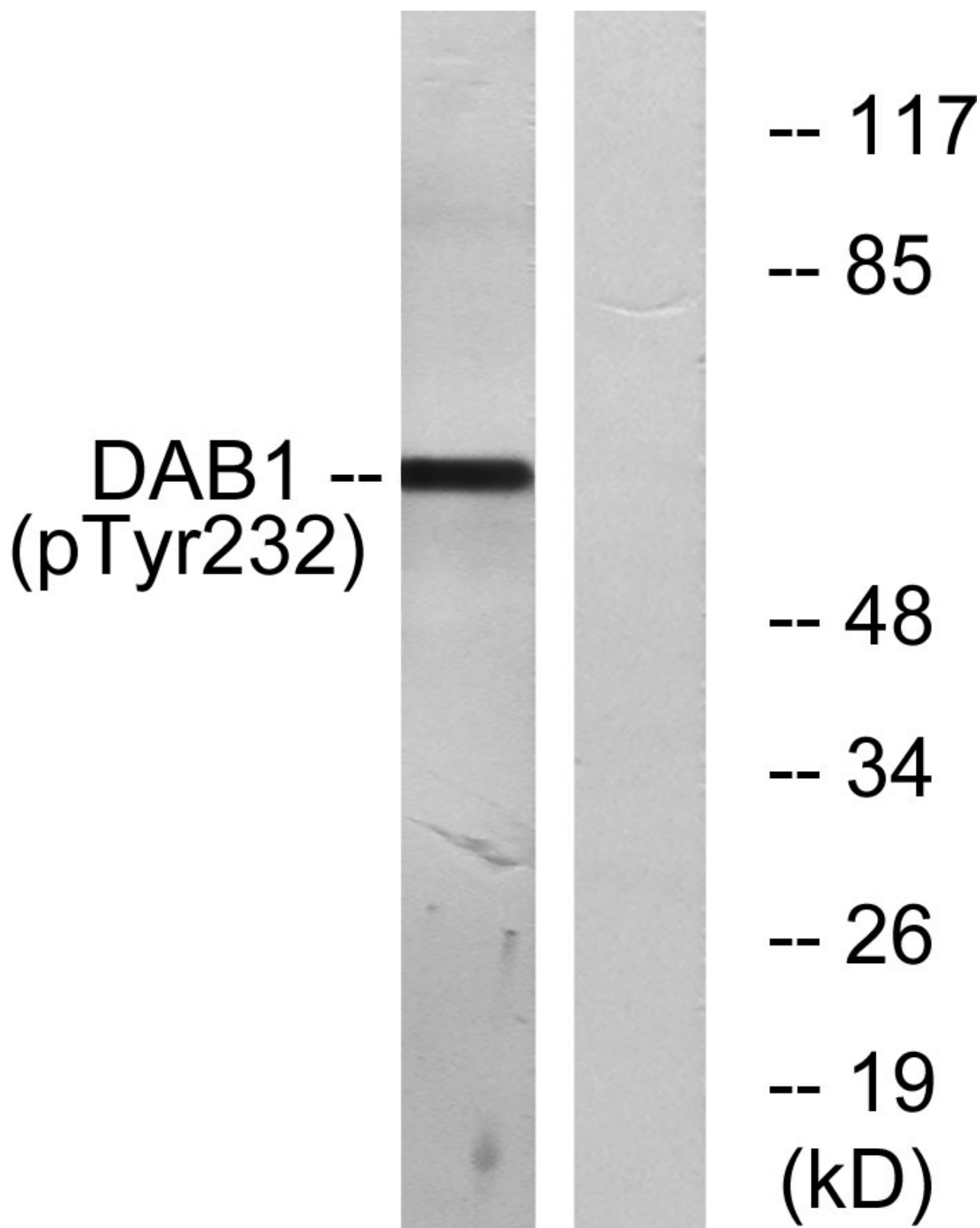
SUPPORT

SUPPORT@GENUINBIOTECH.COM
TEL: +1-540-855-7041

ORDERS

SALES@GENUINBIOTECH.COM
FAX: +1-540-855-7041

WWW.GENUINBIOTECH.COM



Western blotting analysis of lysates from LOVO cells, using Dab1 (Phospho-Tyr232) Antibody. The lane on the right is blocked with the phospho peptide.