

Anti-Phospho-CD5 (Y453) Rabbit Polyclonal Antibody



Catalog #: U1356

Aliases

CD5; LEU1; T-cell surface glycoprotein CD5; Lymphocyte antigen T1/Leu-1; CD antigen CD5

Background

Gene Name: CD5

NCBI Gene Entry: [921](#)

UniProt Entry: [P06127](#)

Application Information

Molecular Weight: Predicted, 55 kDa; observed, 40 kDa

Clonality: Rabbit polyclonal antibody

Species Reactivity: Human, mouse, rat

Applications Tested: Western blotting (WB), immunohistochemistry (IHC), immunocytochemistry (IC)

Immunogen

A synthesized peptide derived from human Phospho-CD5 (Tyr453)

Isotype

Rabbit IgG

Storage Buffer

Supplied in PBS containing 50% glycerol, 0.5% BSA and 0.02% sodium azide.

Storage

Store at -20 °C for one year.

Recommended Dilutions

Western Blotting (WB): 1:500-1:2,000

Immunohistochemistry (IHC): 1:100-1:300

Immunocytochemistry (IC): 1:200-1:1,000

Note: This product is for research use only.

Validation Data

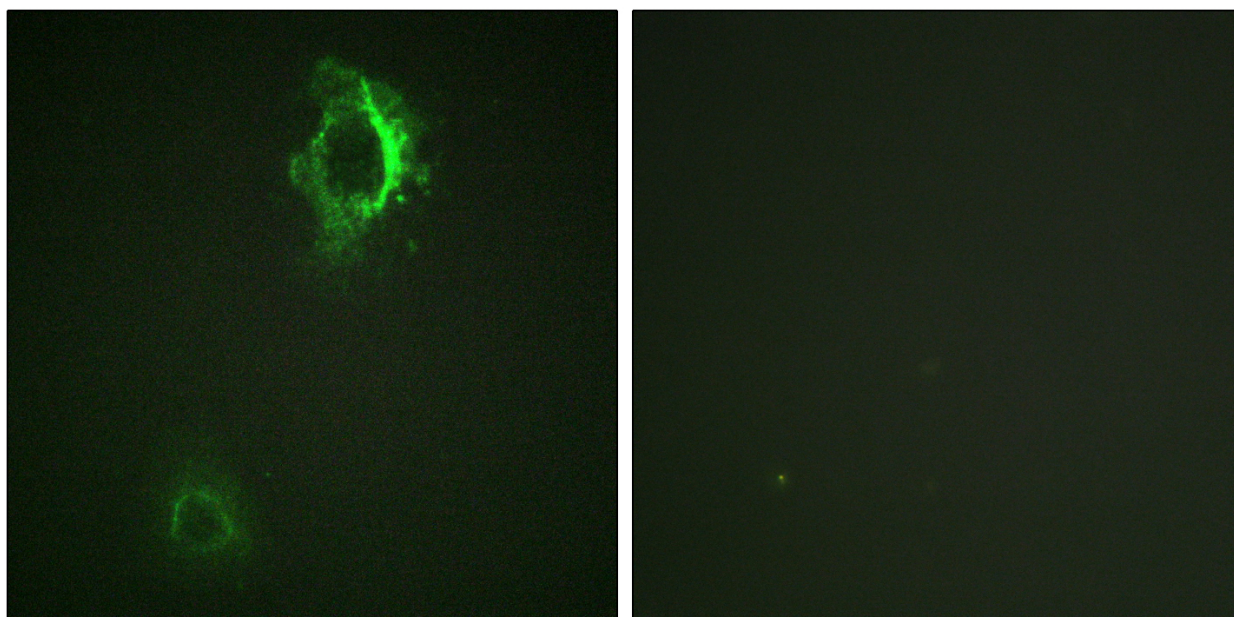
SUPPORT

SUPPORT@GENUINBIOTECH.COM
TEL: +1-540-855-7041

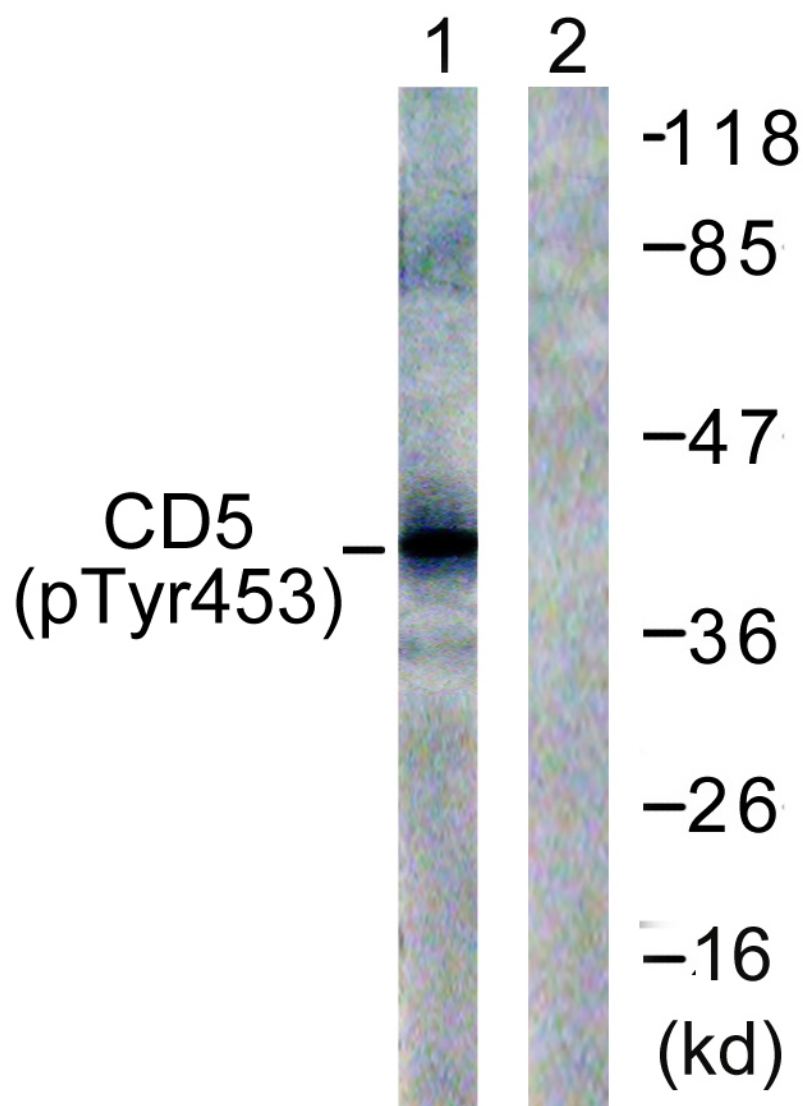
ORDERS

SALES@GENUINBIOTECH.COM
FAX: +1-540-855-7041

WWW.GENUINBIOTECH.COM



Immunofluorescence analysis of HepG2 cells, using CD5 (Phospho-Tyr453) Antibody. The picture on the right is blocked with the phospho peptide.



Western blotting analysis of lysates from 293 cells treated with PMA 125ng/ml 30' , using CD5 (Phospho-Tyr453) Antibody. The lane on the right is blocked with the phospho peptide.