

Anti-Phospho-EpoR (Y368) Rabbit Polyclonal Antibody



Catalog #: U1361

Aliases

EPOR; Erythropoietin receptor; EPO-R

Background

Gene Name: EPOR

NCBI Gene Entry: [2057](#)

UniProt Entry: [P19235](#)

Application Information

Molecular Weight: Predicted, 55 kDa; observed, 55 kDa

Clonality: Rabbit polyclonal antibody

Species Reactivity: Human, mouse, rat

Applications Tested: Western blotting (WB), immunocytochemistry (IC)

Immunogen

A synthesized peptide derived from human Phospho-EpoR (Tyr368)

Isotype

Rabbit IgG

Storage Buffer

Supplied in PBS containing 50% glycerol, 0.5% BSA and 0.02% sodium azide.

Storage

Store at -20 °C for one year.

Recommended Dilutions

Western Blotting (WB): 1:500-1:2,000

Immunocytochemistry (IC): 1:200-1:1,000

Note: This product is for research use only.

Validation Data

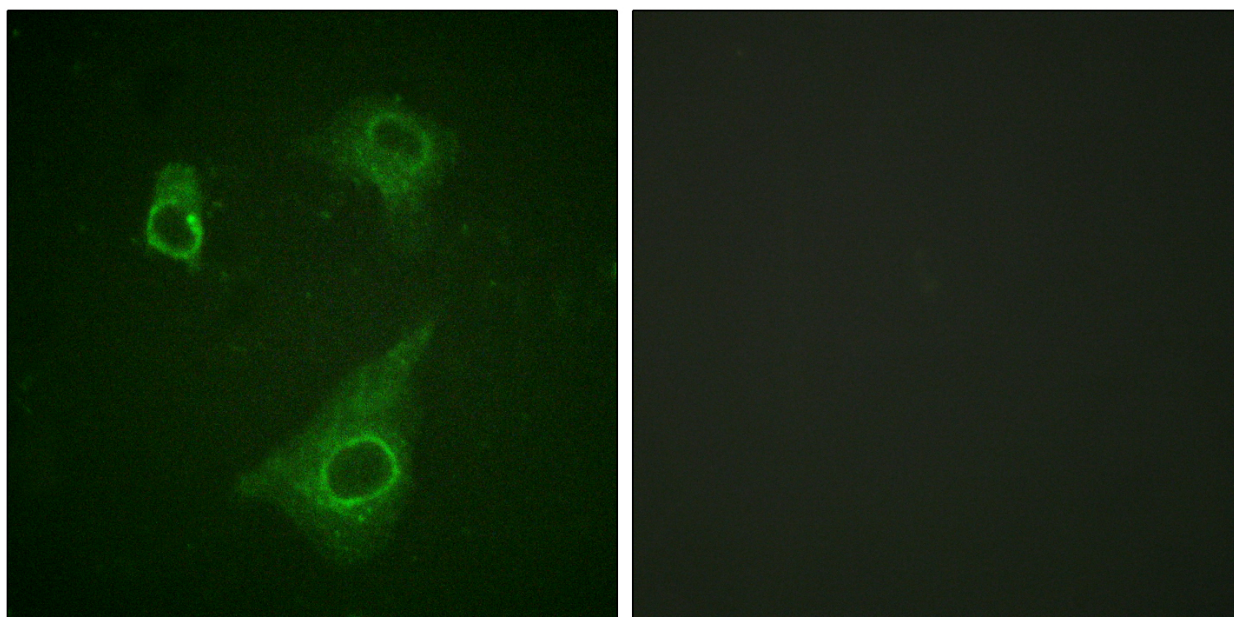
SUPPORT

SUPPORT@GENUINBIOTECH.COM
TEL: +1-540-855-7041

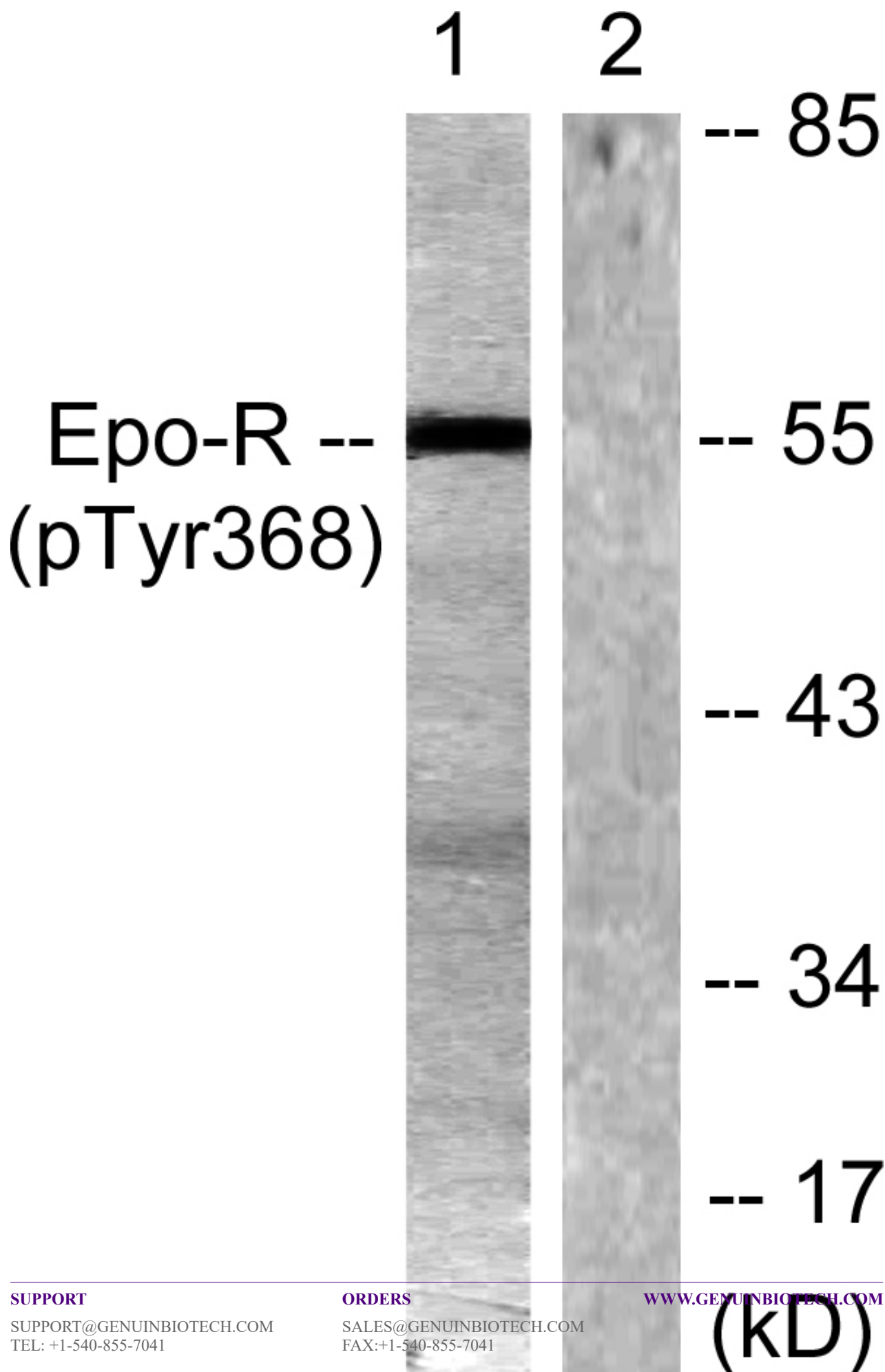
ORDERS

SALES@GENUINBIOTECH.COM
FAX: +1-540-855-7041

WWW.GENUINBIOTECH.COM



Immunofluorescence analysis of HepG2 cells, using Epo-R (Phospho-Tyr368) Antibody. The picture on the right is blocked with the phospho peptide.



SUPPORT

SUPPORT@GENUINBIOTECH.COM
TEL: +1-540-855-7041

ORDERS

SALES@GENUINBIOTECH.COM
FAX: +1-540-855-7041

WWW.GENUINBIOTECH.COM

Anti-Phospho-EpoR (Y368) Rabbit Polyclonal Antibody

PAGE 4

Western blotting analysis of lysates from K562 cells, using Epo-R (Phospho-Tyr368) Antibody. The lane on the right is blocked with the phospho peptide.

SUPPORT

SUPPORT@GENUINBIOTECH.COM
TEL: +1-540-855-7041

ORDERS

SALES@GENUINBIOTECH.COM
FAX: +1-540-855-7041

WWW.GENUINBIOTECH.COM